

COUNTY SURVEYORS FILE DATA
DO NOT REMOVE FROM OFFICE

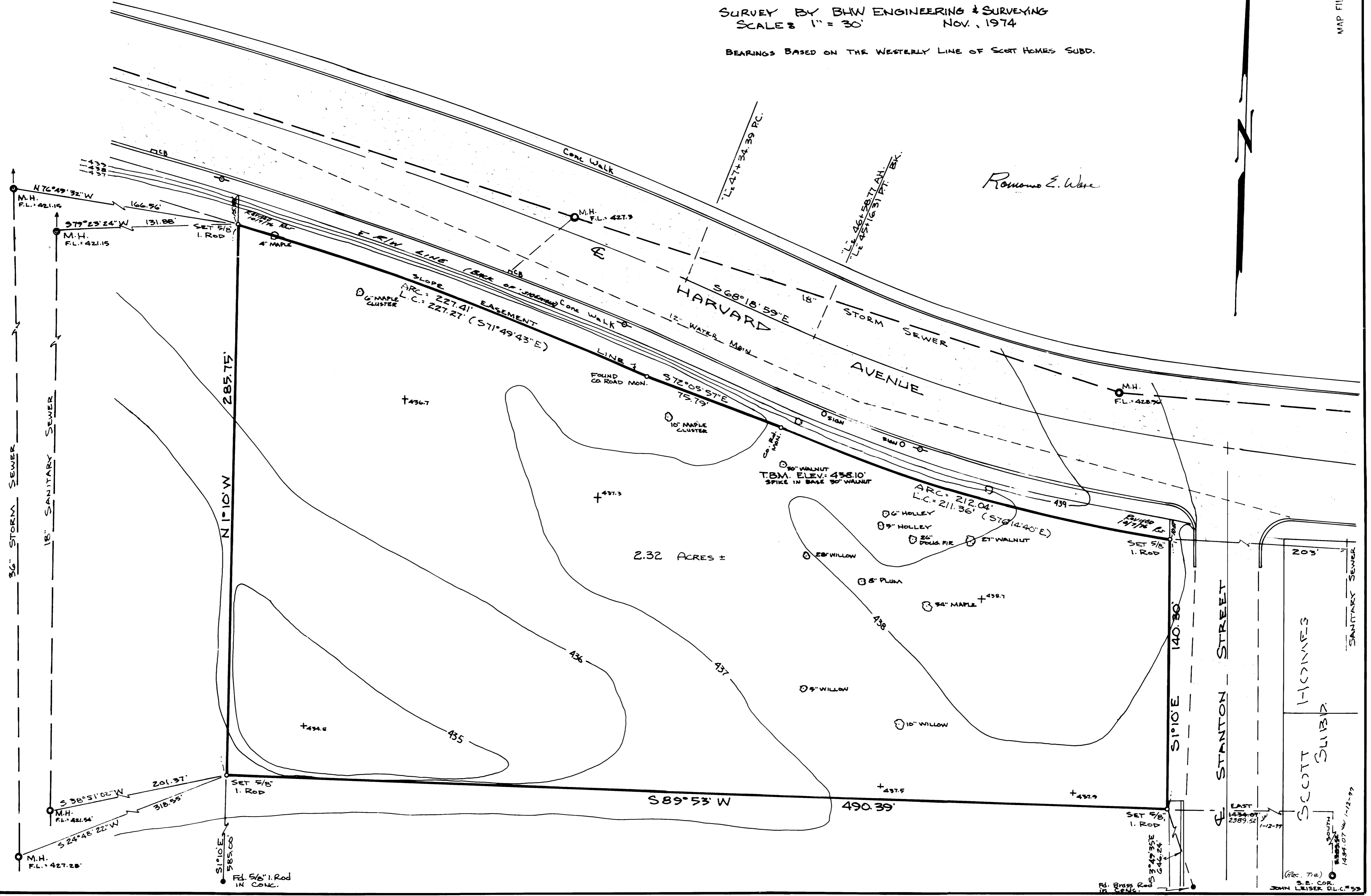
SITE PLAN SURVEY FOR STATE OF OREGON DEPARTMENT OF GENERAL SERVICES SECTION 23, T27S, R6W, W.M. ROSEBURG, OREGON

FILED &
RECEIVED
NOV 23 1974
COUNTY SURVEYOR
DOUGLAS COUNTY, ORE.

SURVEY BY BHW ENGINEERING & SURVEYING
SCALE 8 1" = 30'

BEARINGS BASED ON THE WESTERLY LINE OF SCOTT HOMES SUBD.

MAP FILE 1984-08



Roman E. Ware



MAP FILE 69-1-544

SCOTT SLIBR
HICKINES
SANTARY SEWER
203'

REC. 7(a)
S.E. COR.
JOHN LEISER D.L.C. 59
1489.07 W 1-12-77