

SUBDIVISION OF SECTION 33, T26S, R3W, W.M.

Surveyed for A.J. Standley by Victor M. McLind

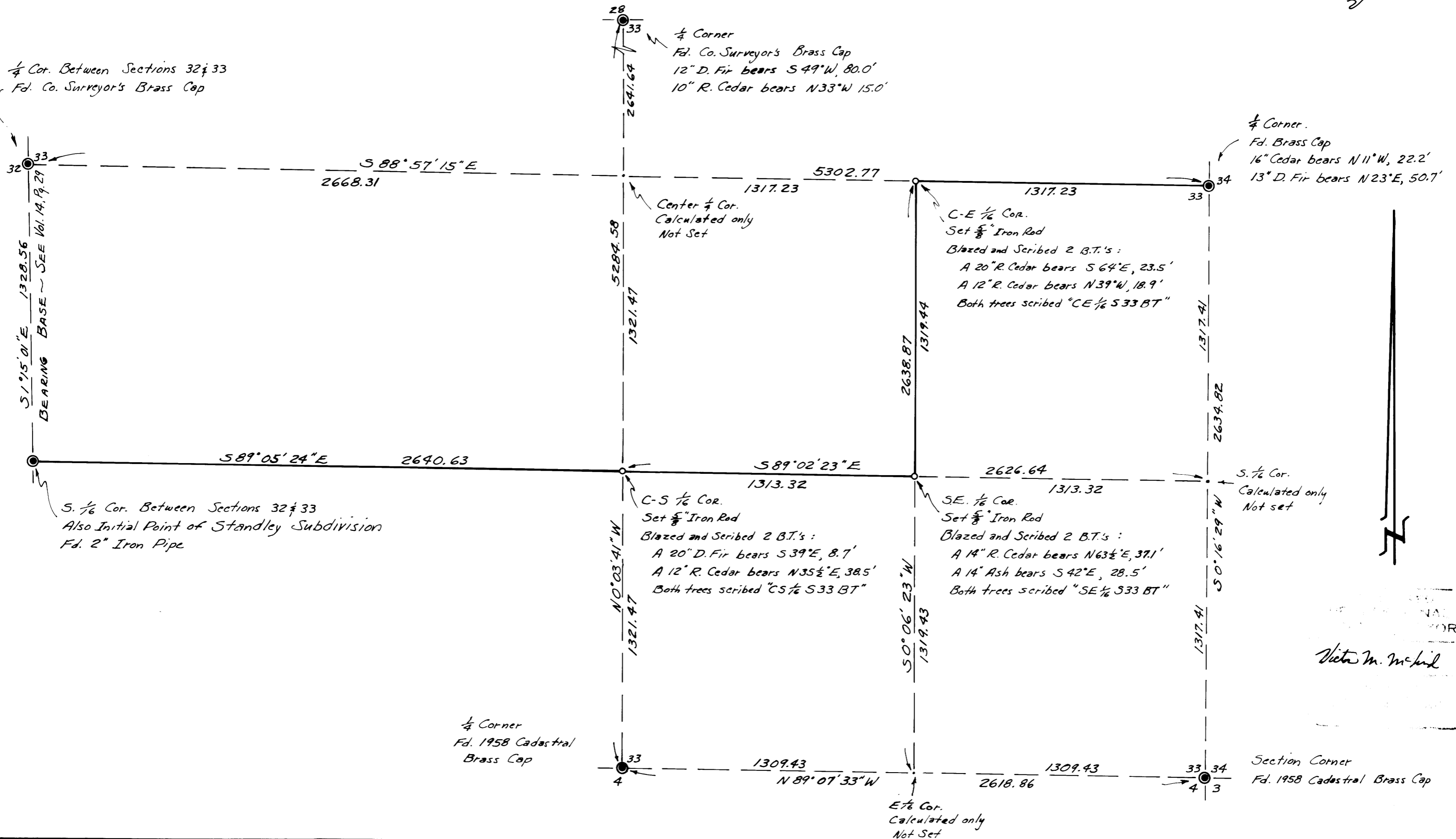
November, 1974

Scale: 1" = 400'

COUNTY SURVEYORS FILE DATA
DO NOT REMOVE FROM OFFICE

FILED ✓
RECEIVED 2/9
NOV 25 1974

COUNTY SURVEYOR
DOUGLASS COUNTY, ORE.
✓



Victor M. McLind

MAP FILE M54-66

MAP FILE M54-66