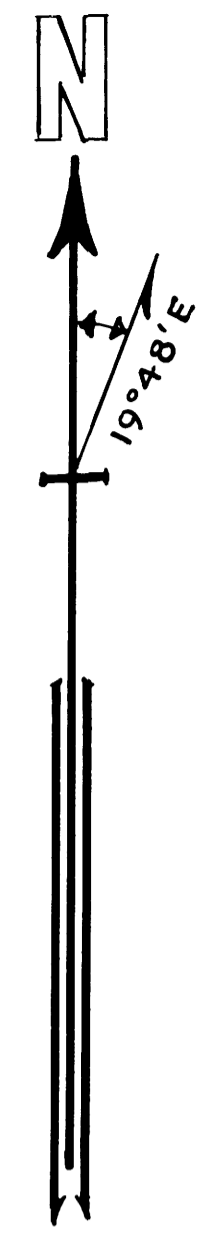
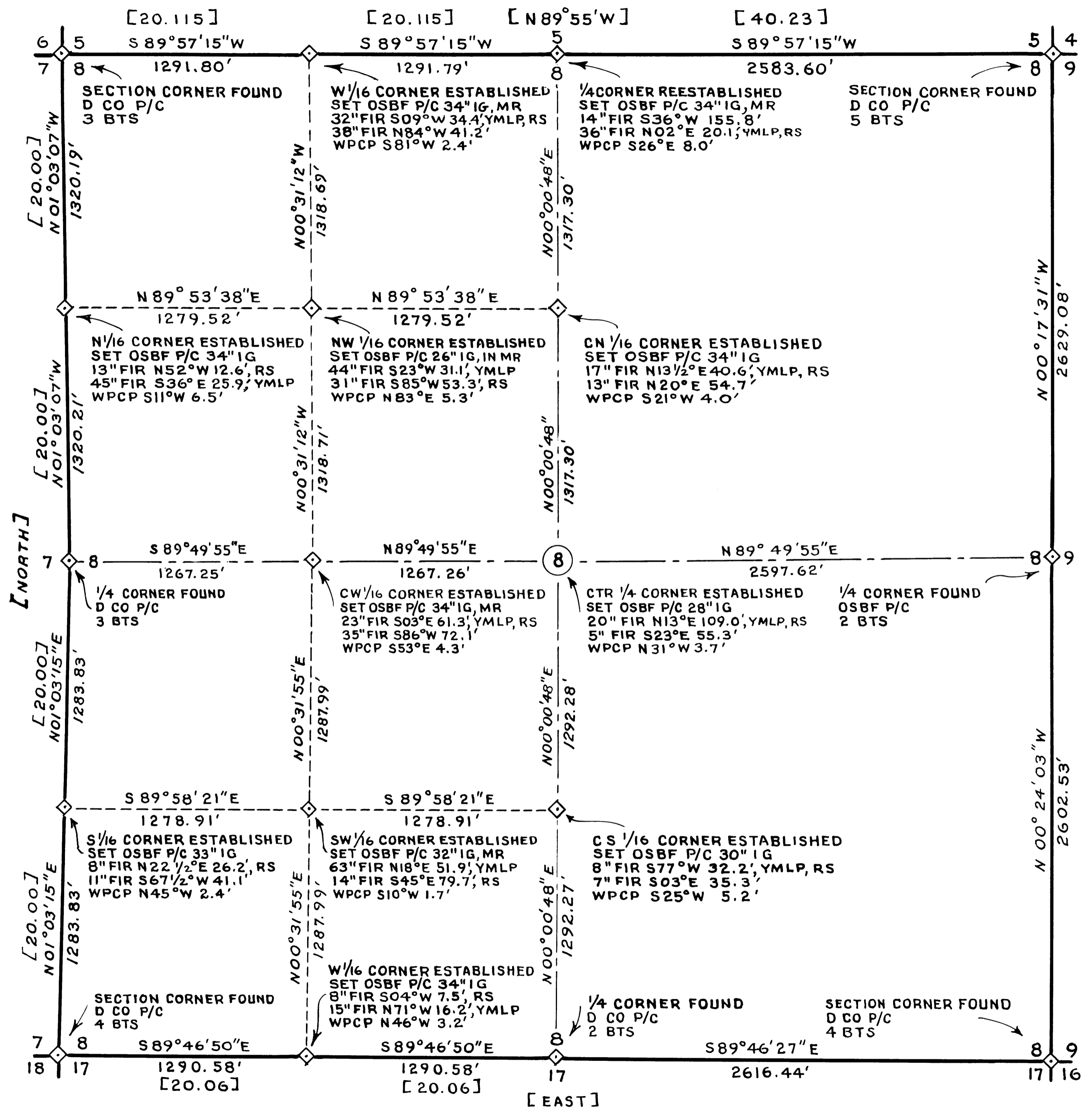


MS4-60



**LEGEND**

- OSBF P/C = OREGON STATE BOARD OF FORESTRY 1 1/2"x 36" GALVANIZED IRON PIPE WITH 3" BRONZE CAP
- D CO P/C = DOUGLAS COUNTY 1" GALVANIZED IRON PIPE WITH 2" BRASS CAP
- WPCP = 4"x 4"x 72" WHITE PAINTED CEDAR POST
- YMLP = YELLOW METAL LOCATION POSTER
- IG = IN GROUND
- BTS = BEARING TREES
- CRS = COURSE
- [ ] = RECORD BEARINGS AND DISTANCES
- MR = MOUND OF ROCK
- RS = RS 359
- SB = SCRIBED IN BARK

FOR DETAILED REPORT ON FOUND CORNERS SEE COUNTY RECORDS. ALL NEW CORNERS AND ACCESSORIES MARKED ACCORDING TO "MANUAL OF INSTRUCTIONS FOR THE SURVEY OF THE PUBLIC LANDS OF THE U. S. " DISTANCE MEASURED TO BT FACE.  
 ESTABLISHED COR. = NEW CORNER SET  
 REESTABLISHED COR. = LOST GLO, CADASTRAL OR OTHER CORNER RESET BY PROPORTIONATE MEASUREMENT OR AS NOTED.

**SOLAR OBSERVATION**

MAGNETIC VARIATION 19°48' EAST  
 DATE MAY 6, 1974  
 STANDARD TIME 2:02:31 P M  
 LOCAL TIME 1:48:45 P M  
 SUN'S DECLINATION N 16° 37' 26"  
 REF. & PAR. CORRECTIONS -0'32"  
 LATITUDE N 42° 47' 48"  
 SUN'S ALTITUDE 54° 38' 30"  
 PLACE OF OBSERVATION S 18° 35' 07" E 302.73' FROM CORNER OF SECTION 7, 8, 17 & 18, T.32S., R.6 W., W.M.

REGISTERED PROFESSIONAL LAND SURVEYOR  
*Arnold G. Gibson*  
 OREGON  
 NOV 4 1955  
 ARNOLD G. GIBSON  
 359

SURVEY FOR:  
 STATE OF OREGON - DEPARTMENT OF FORESTRY  
**SECTION 8, T.32S., R.6W., W.M.**  
 DOUGLAS COUNTY, OREGON  
 THEODOLITE, TAPE AND EDM SURVEY BY: D. SMITH, W. METCALF, T. KLOSTERMAN, B. SMITH AND J. SHUMWAY  
 DRAWN BY: S. DONALDSON  
 OCTOBER 15, 1974  
 SCALE: 1" = 400'

COUNTY SURVEYORS FILE # 7A  
 (DO NOT REMOVE FROM OFFICE)