

SURVEY IN LOT 5, BLOCK 4, FAIRACRES, SECTION 36, TOWNSHIP 26 SOUTH, RANGE 6 WEST, WIL. MER.

Surveyed for Bernard Peterson by Don E. Garrett

August, 1974

Set 5/8" Iron Rod

COUNTY SURVEYORS FILE DATA  
DO NOT REMOVE FROM OFFICE

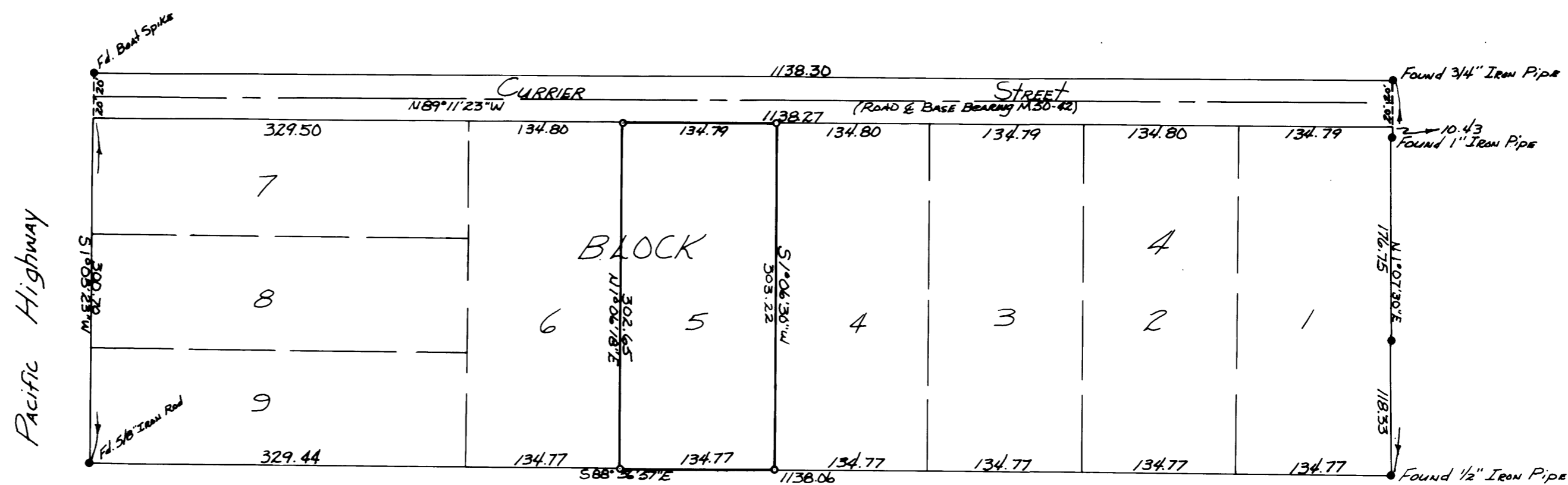
Scale 1" = 100'

FILED ✓  
RECEIVED ✓

AUG 6 1974

COUNTY SURVEYOR  
DOUGLAS COUNTY, ORE.

MAP FILE M54-6



REGISTERED  
PROFESSIONAL  
LAND SURVEYOR

*Don E. Garrett*  
OREGON  
JULY 14, 1961  
DON E. GARRETT  
544

MAP FILE M54-6