

SURVEY FOR PROPERTY LINE DESCRIPTION

IN SECTION 19, T.22S. R.4W. W.M.

FOR: **GEORGE BARTLETT**

BY: **BAUGHMAN SURVEYING SERVICE**

OCTOBER 1974

SCALE: 1" = 100'

COUNTY SURVEYORS FILE OFFICE
DO NOT REMOVE FROM OFFICE

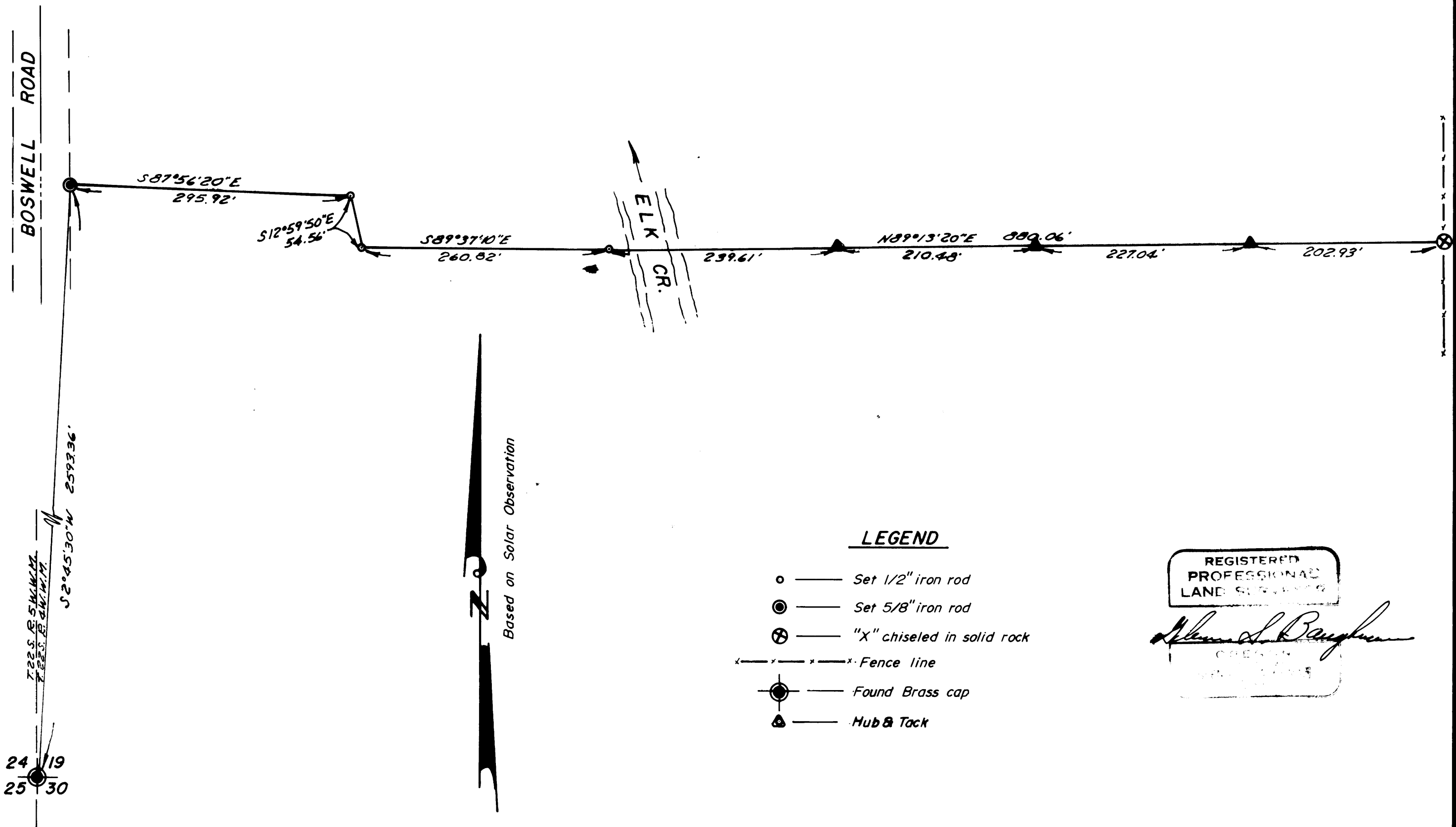
FILED ✓
RECEIVED ✓

NOV 18 1974

COUNTY SURVEYOR
DOUGLAS COUNTY, ORE.

Luc

MAP M54-57



REGISTERED
PROFESSIONAL
LAND SURVEYOR

Alvin S. Baughman

CREATION
NOV 18 1974

MAP M54-57