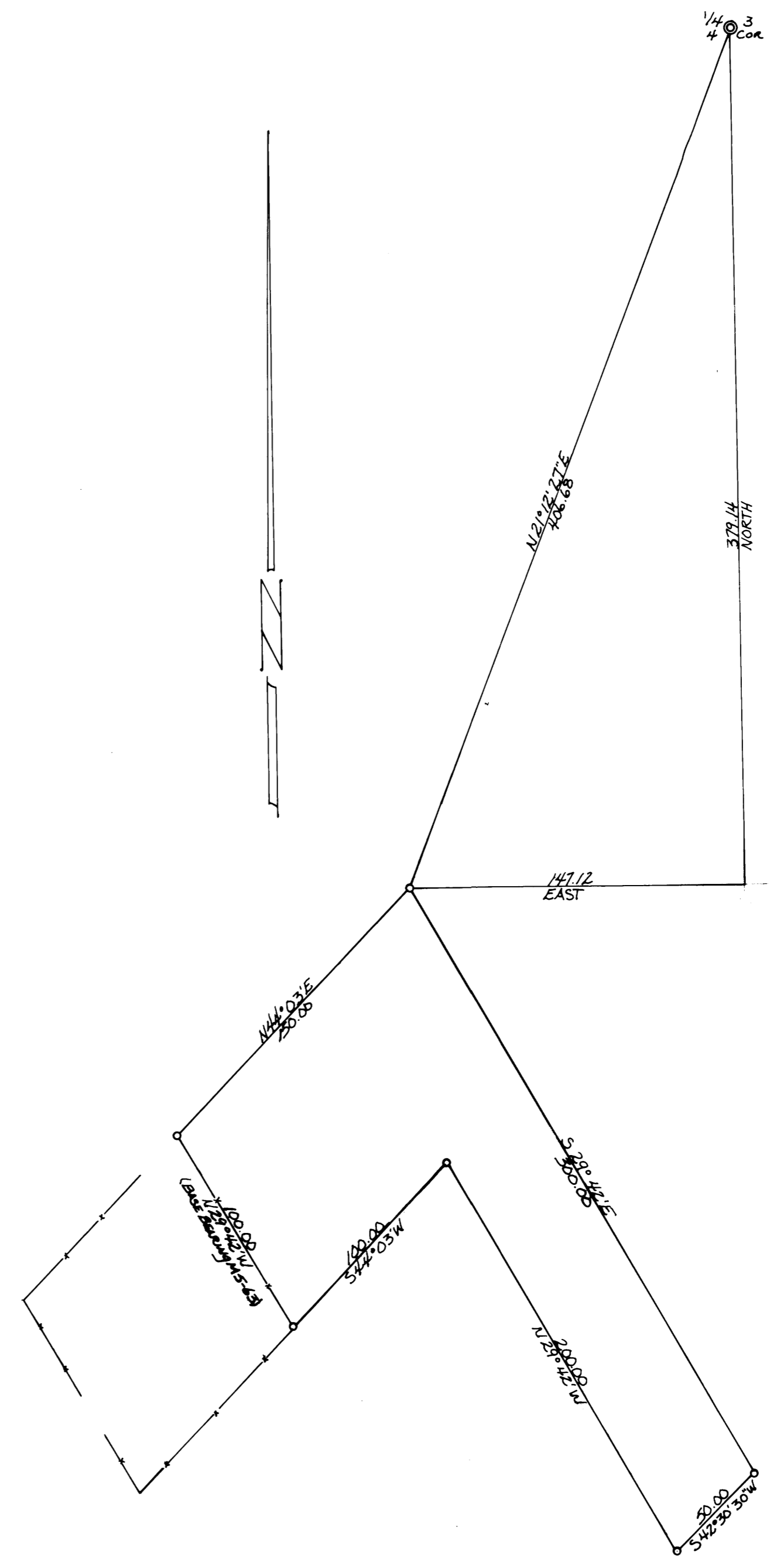


COUNTY SURVEYORS FILE DATA
DO NOT REMOVE FROM OFFICE

FILED *✓*
RECEIVED *js*
NOV 14 1974
COUNTY SURVEYOR
DOUGLAS COUNTY, ORE
ma

SURVEY IN UNPLATTED WELLS ADDITION TO OAKLAND
SEC. 4, TOWNSHIP 25 SOUTH, RANGE 5 WEST, W.M.
Surveyed for Melvin Martin by Don E. Garrett
November, 1974 Scale 1" = 50'
o Set 5/8" Iron Rod



MAP FILED 54-56

MAP FILED 54-56

REGISTERED
PROFESSIONAL
LAND SURVEYOR
Don E. Garrett
DON E. GARRETT
544