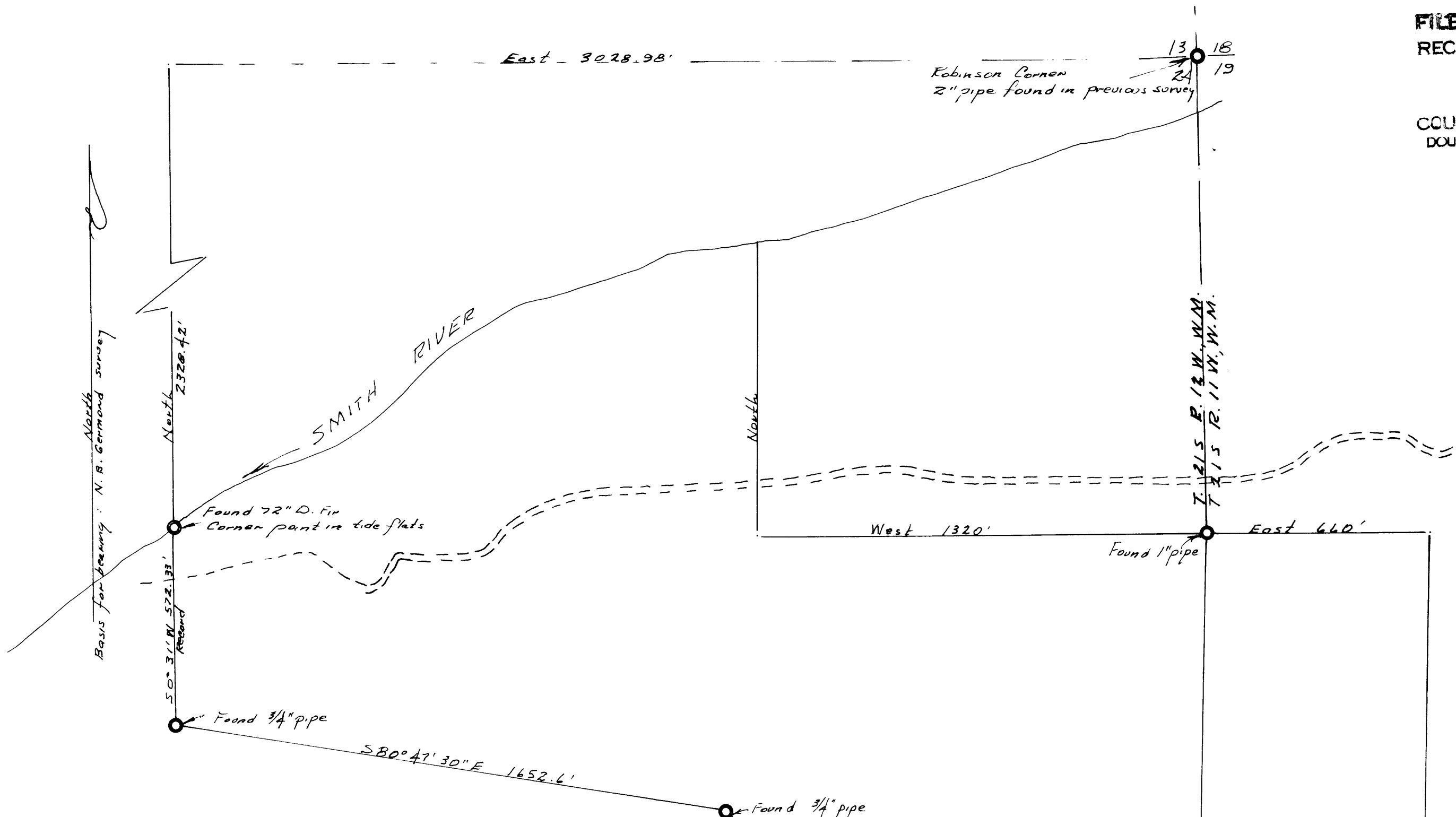


FILED m&R
RECEIVED KR

NOV 4 1974

COUNTY SURVEYOR
DOUGLAS COUNTY, ORE
m&R

M 54-53



SURVEY OF A PORTIONS OF THE NORTH 1/2 & NE 1/4 SE 1/4
OF SECTION 24, T. 21 S., R. 12 W., AND THE SW 1/4 NW 1/4 & NW 1/4 SW 1/4
OF SECTION 19, T. 21 S., R. 11 W., W.M., DOUGLAS
COUNTY, OREGON

for: ELMO MIX

Corners found: ○
Corners set: ○
Scale: 1" = 300'
October 27, 1974

REGISTERED
PROFES
LAND SURVEYOR

Warren D. Hootman

OREGON
MAY 18, 1967
WARREN D. HOOTMAN
389

COUNTY SURVEYORS FILE DAY
DO NOT REMOVE FROM OFFICE