

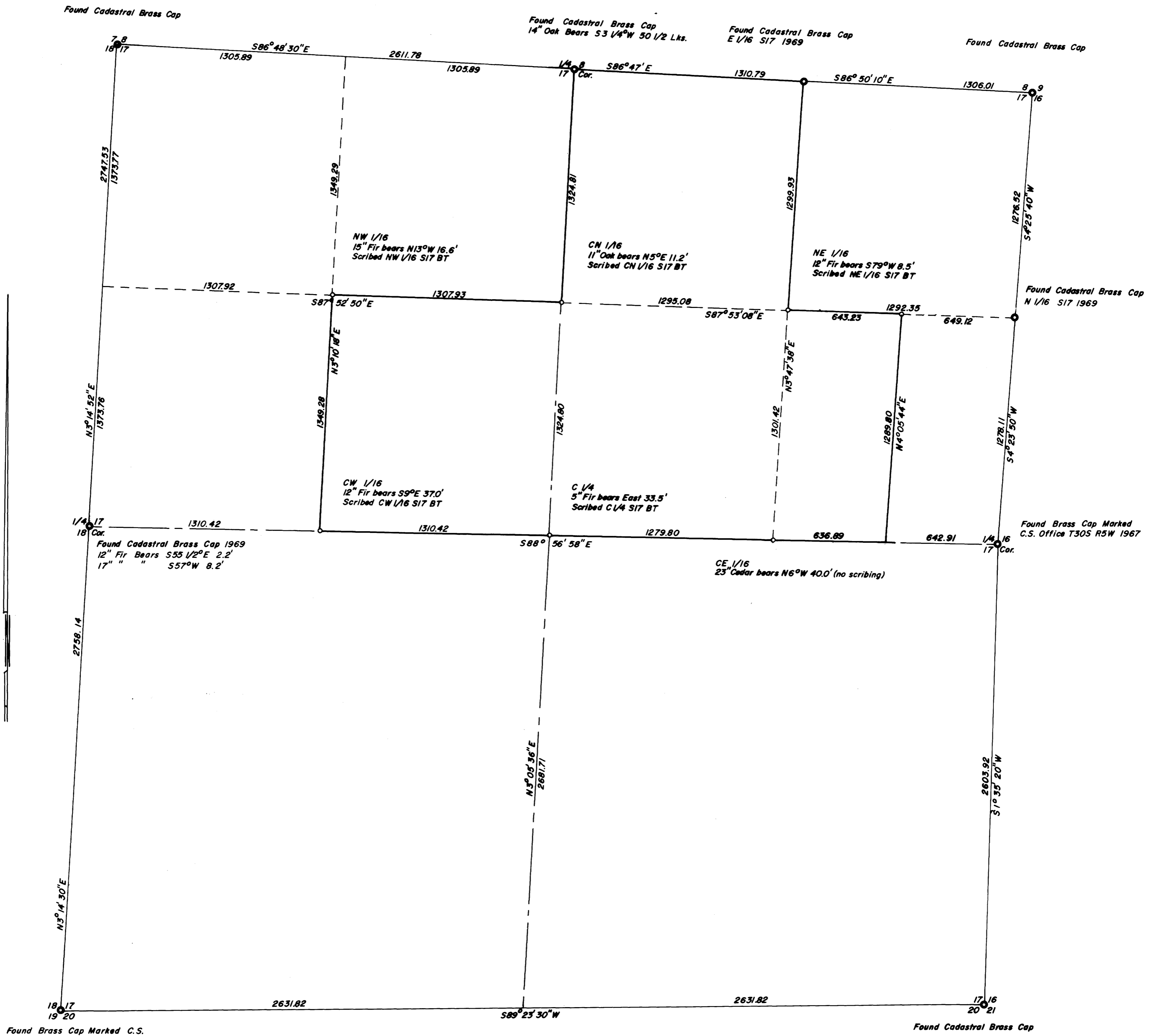
OCT 10 1974

COUNTY SURVEYOR
CLATSOP COUNTY, ORE.

SURVEY IN SECTION 17, TOWNSHIP 30 SOUTH, RANGE 5 WEST, WILLAMETTE MERIDIAN
Surveyed for Clyde George by Don E. Garrett
August 1974

Scale 1" = 400'

o-Set 5/8" Iron Rod
Bearings are based on a Solar Observation taken October 17, 1973.



Found Brass Cap Marked C.S.
Office T30S R5W 1961
20" Fir Bears North 65.8'

REGISTERED
PROFESSIONAL
LAND SURVEYOR

Don E. Garrett

OREGON
JULY 14, 1961
DON E. GARRETT
544