

SURVEY FOR PROPERTY CORNERS IN LOT 3, BLOCK 3, BRIGGS ACRES

SITUATED IN T.29S. R.5W. W.M.

FOR: LEO CLINTON

BY: BAUGHMAN SURVEYING SERVICE

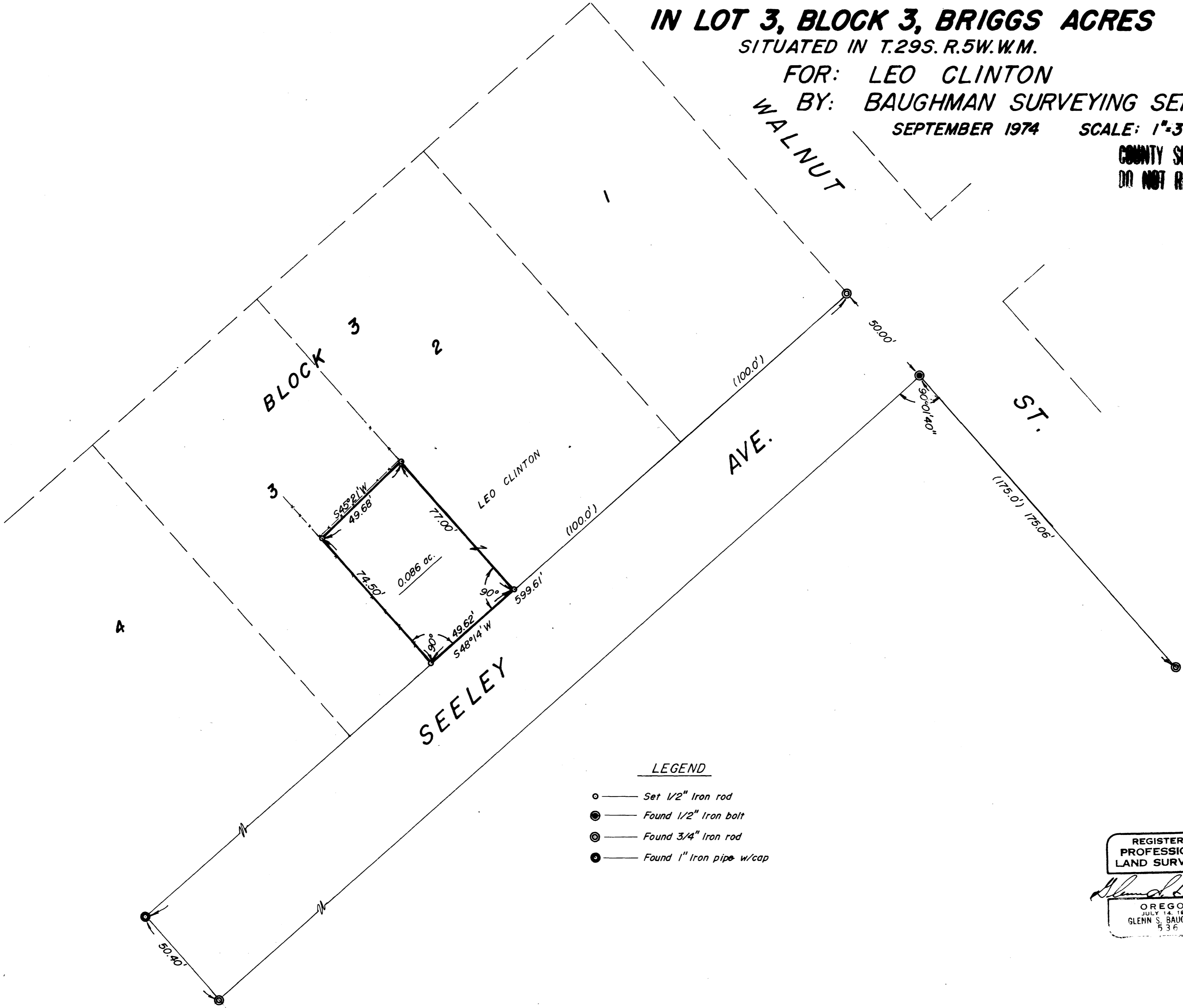
SEPTEMBER 1974 SCALE: 1"=30'

FILED 2
RECEIVED 27

OCT 10 1974

COUNTY SURVEYOR
DOUGLAS COUNTY, ORE.

COUNTY SURVEYORS FILE DATA
DO NOT REMOVE FROM OFFICE



LEGEND

- — Set 1/2" Iron rod
- — Found 1/2" Iron bolt
- ⊙ — Found 3/4" Iron rod
- ⦿ — Found 1" Iron pipe w/cap

REGISTERED
PROFESSIONAL
LAND SURVEYOR

Glenn S. Baughman
OREGON
JULY 14, 1961
GLENN S. BAUGHMAN
536

Based on plat of BRIGGS ACRES

MAP FILE M54-40

MAP FILE M54-40