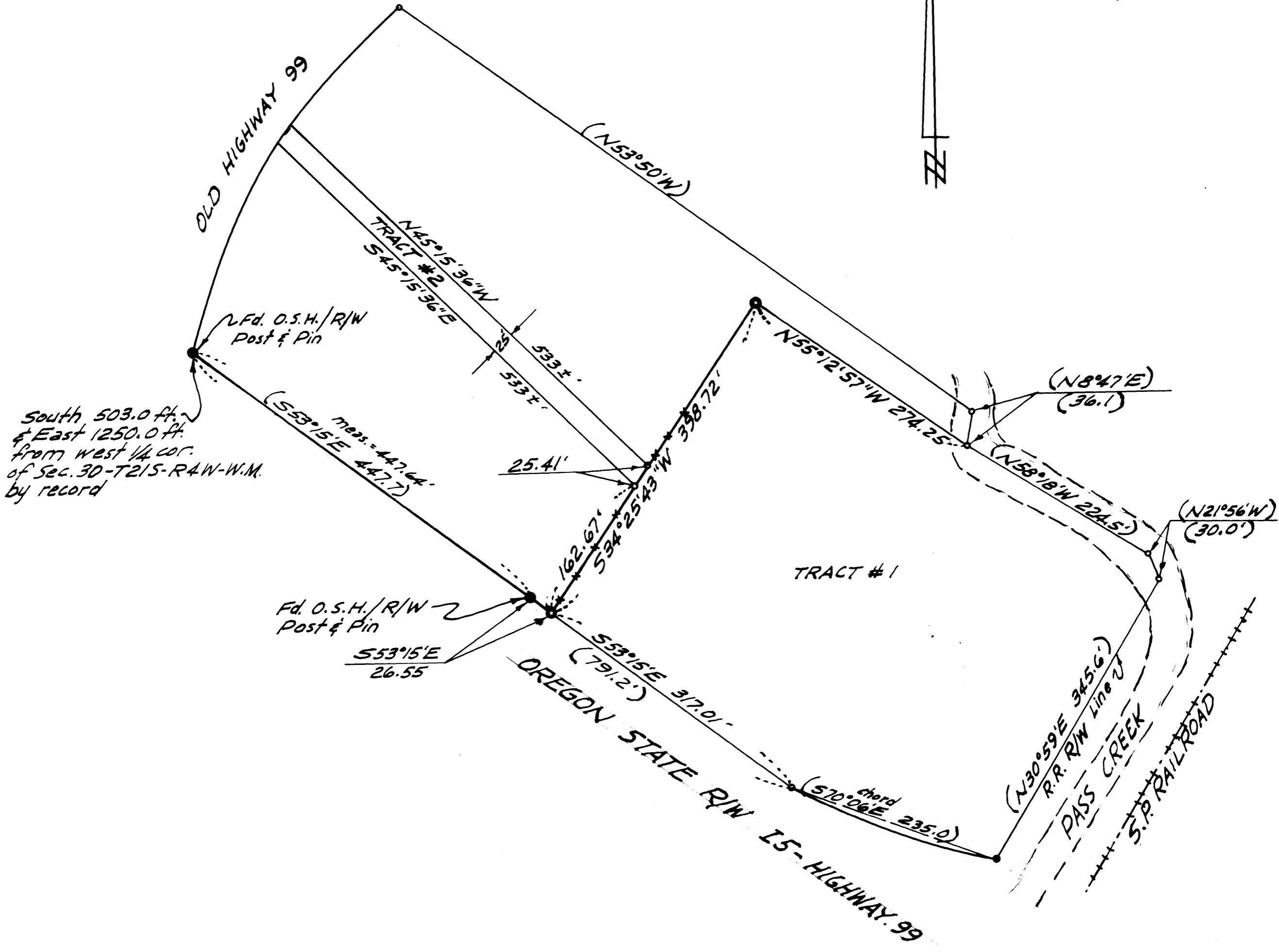


FILED ✓
RECEIVED ✓
OCT 9 1974
COUNTY SURVEYOR
DOUGLAS COUNTY, ORE.
✓



South 503.0 ft. & East 1250.0 ft. from West 1/4 cor. of Sec. 30-T215-R4W-W.M. by record

Fd. O.S.H./R/W Post & Pin
S53°15'E 26.55

LEGEND
 5/8" re-bar set ———— ⊙
 Monument found ———— ⊙
 Fence line *-*-*-*
 Data of Record --- ()

NOTE: Survey based on survey by Wilford N. Haines for L.E. Jarrett Aug. 8, 1970 in which the bearing between the two found Highway monuments shown hereon equals S53°15'E.

REGISTERED PROFESSIONAL LAND SURVEYOR

S. Kendrick Ford

OREGON
JULY 10, 1964
S. KENDRICK FORD
642

SURVEY FOR
FRED CADY

SEC. 30-T215-R4W-W.M.

by
Stephen H. Ford Inc.
405 Tiffany Bld. Eugene, Ore.
Scale: 1"=100' Oct. 1974

COUNTY SURVEYORS FILE DATA
DO NOT REMOVE FROM OFFICE