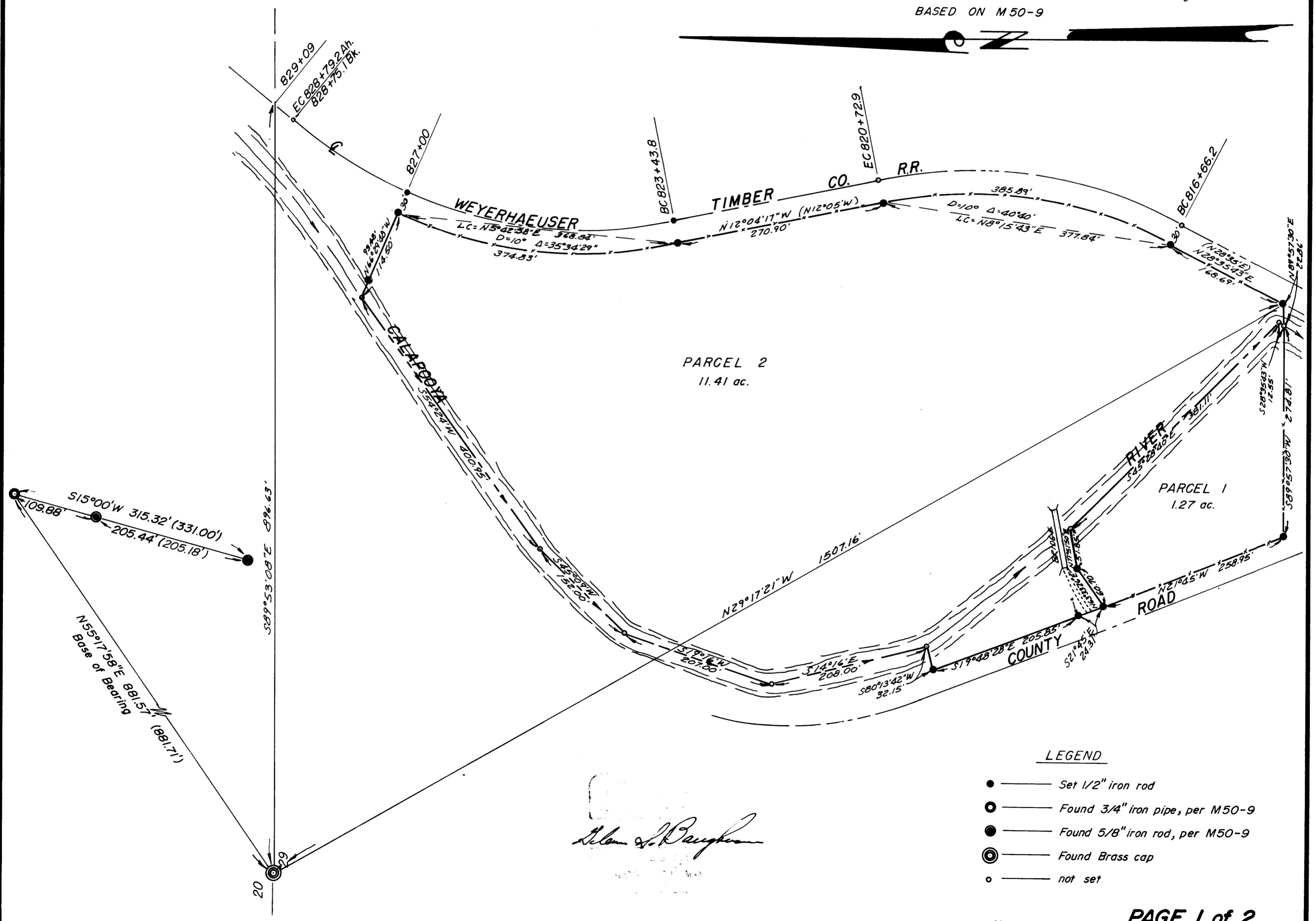
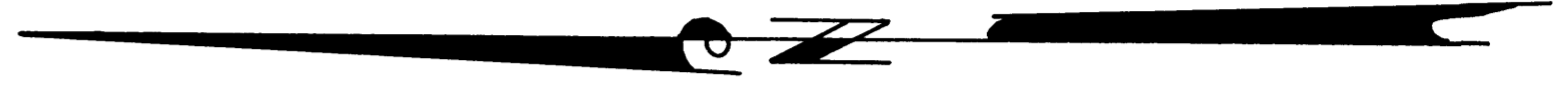


MINOR LAND PARTITION IN SECTION 29, T.24S., R.3W.W.M. SEPTEMBER 1974 SCALE: 1"=100'

COUNTY SURVEYORS FILE IN
DO NOT REMOVE FROM OFFICE

FILED
RECEIVED
OCT 4 1974
COUNTY SURVEYOR
DOUGLAS COUNTY, ORE.

BASED ON M50-9



PARCEL 2
11.41 ac.

PARCEL 1
1.27 ac.

Alan S. Baughman
COUNTY SURVEYOR
DOUGLAS COUNTY, ORE.

LEGEND

- — Set 1/2" iron rod
- — Found 3/4" iron pipe, per M50-9
- — Found 5/8" iron rod, per M50-9
- ⊙ — Found Brass cap
- — not set

MAP FILE M54-35A

MAP FILE M54-35A

