

SURVEY FOR PROPERTY DESCRIPTION

IN SECTIONS 14 & 15, T.27S. R.5W.W.M.

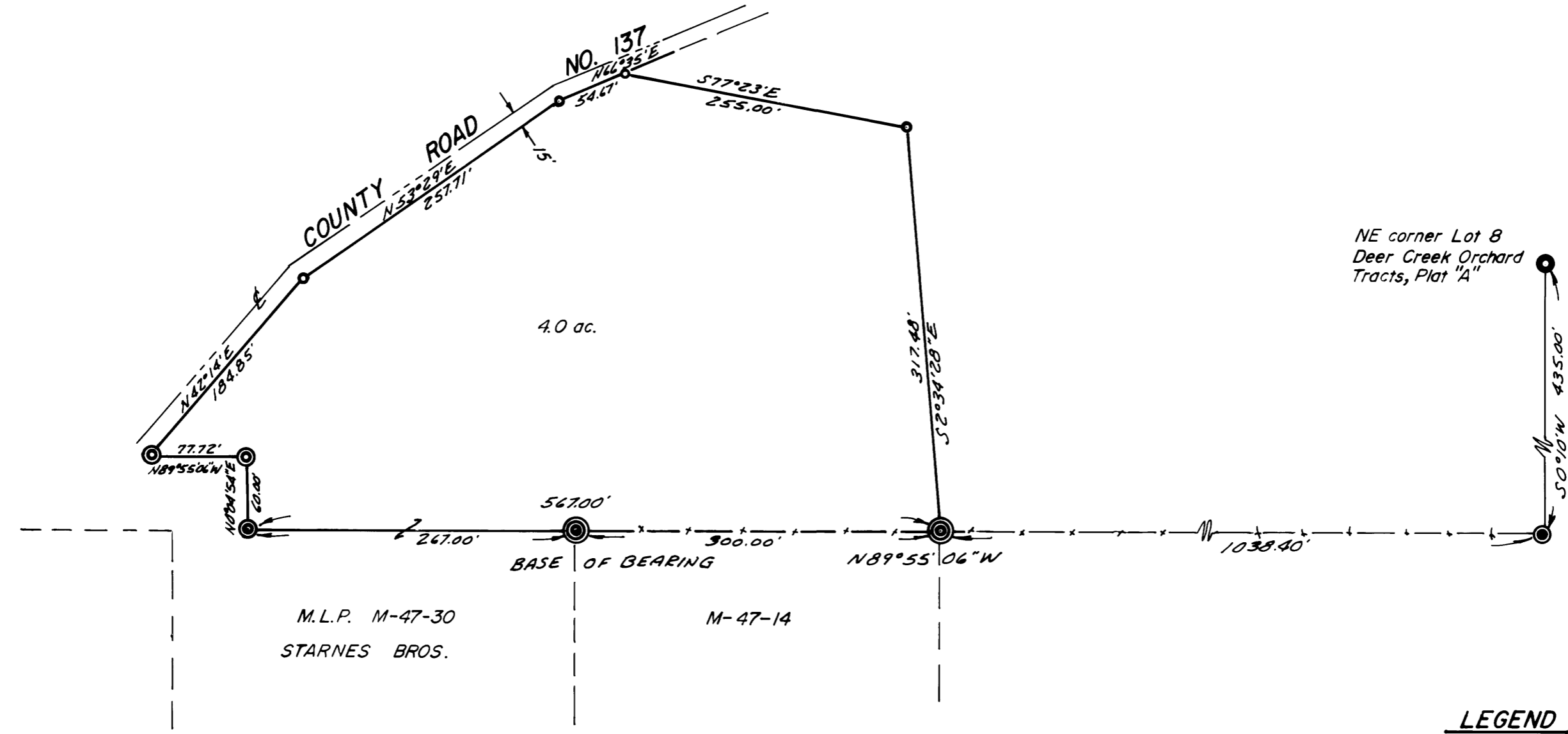
FOR: STARNES BROS.
 BY: BAUGHMAN SURVEYING SERVICE

AUGUST 1974 SCALE: 1" = 100'

COUNTY SURVEYORS FILE DATA
 NOT REMOVE FROM OFFICE

FILED *7*
 RECEIVED *5/26*
 COUNTY SURVEYOR
 DEER CREEK COUNTY, ORE.

MAP FILE M 54-23



NE corner Lot 8
 Deer Creek Orchard
 Tracts, Plat "A"

Based on M-47-30

LEGEND

- — Set 1/2" iron rod
- ⊙ — Found 5/8" iron rod, per M-47-30
- — Found 1" steel bar
- ⦿ — Found 1" iron rod
- ⊗ — Found 5/8" iron rod w/cap, per M-47-14

REGISTERED
 PROFESSIONAL
 LAND SURVEYOR
Eugene A. Bloom
 OREGON
 MAY 13, 1960
 EUGENE A. BLOOM
 492

MAP FILE M 54-23