

SURVEY IN DLC 48 & 50, SECTION 21, TOWNSHIP 30 SOUTH, RANGE 5 WEST, WILLAMETTE MERIDIAN, OREGON

Surveyed for Lawrence Boyle by Don E. Garrett

August, 1974

Bearings are based on a solar observation taken Oct. 17, 1973.

COUNTY SURVEYORS FILE DATA
DO NOT REMOVE FROM OFFICE

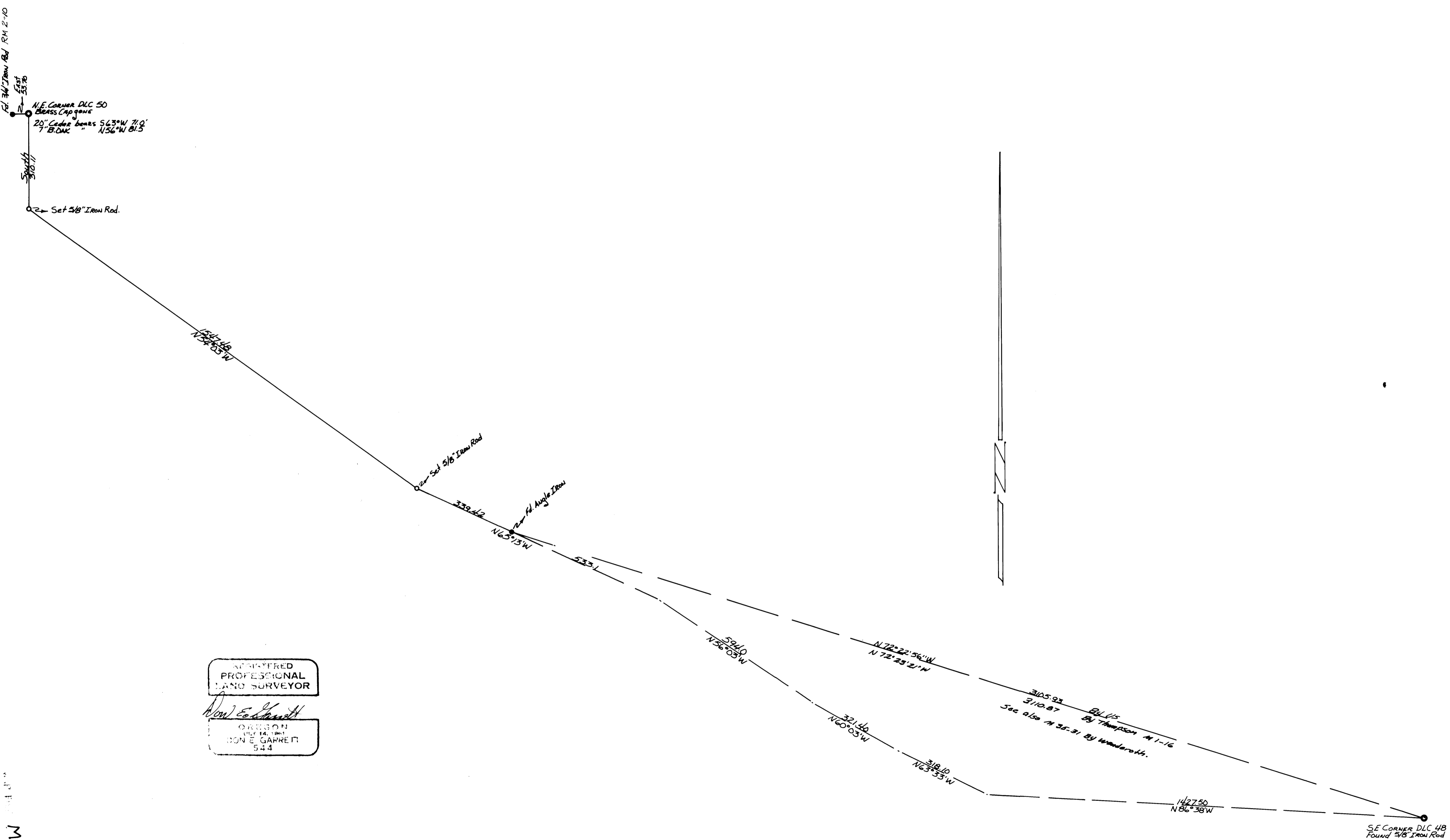
Scale 1" = 200'

FILED
RECEIVED *See*

AUG 20 1974

COUNTY SURVEYOR
DOUGLAS COUNTY, ORE.
md

M 54-17



REGISTERED
PROFESSIONAL
LAND SURVEYOR

Don E. Garrett

OREGON
JULY 14, 1961
DON E. GARRETT
544

M 54-17