

A FIELD SURVEY & PLAT OF DEED DESCRIPTIONS OF
ESTATE OF JAMES GORDON WATTS
(DETLOFF GUNTHER, SPECIAL ADMINISTRATOR)

NW 1/4 NW 1/4 SECTION 8 TWP. 30S. RGE. 5W
W.M. DOUGLAS COUNTY, OREGON

SCALE: 1" = 100'

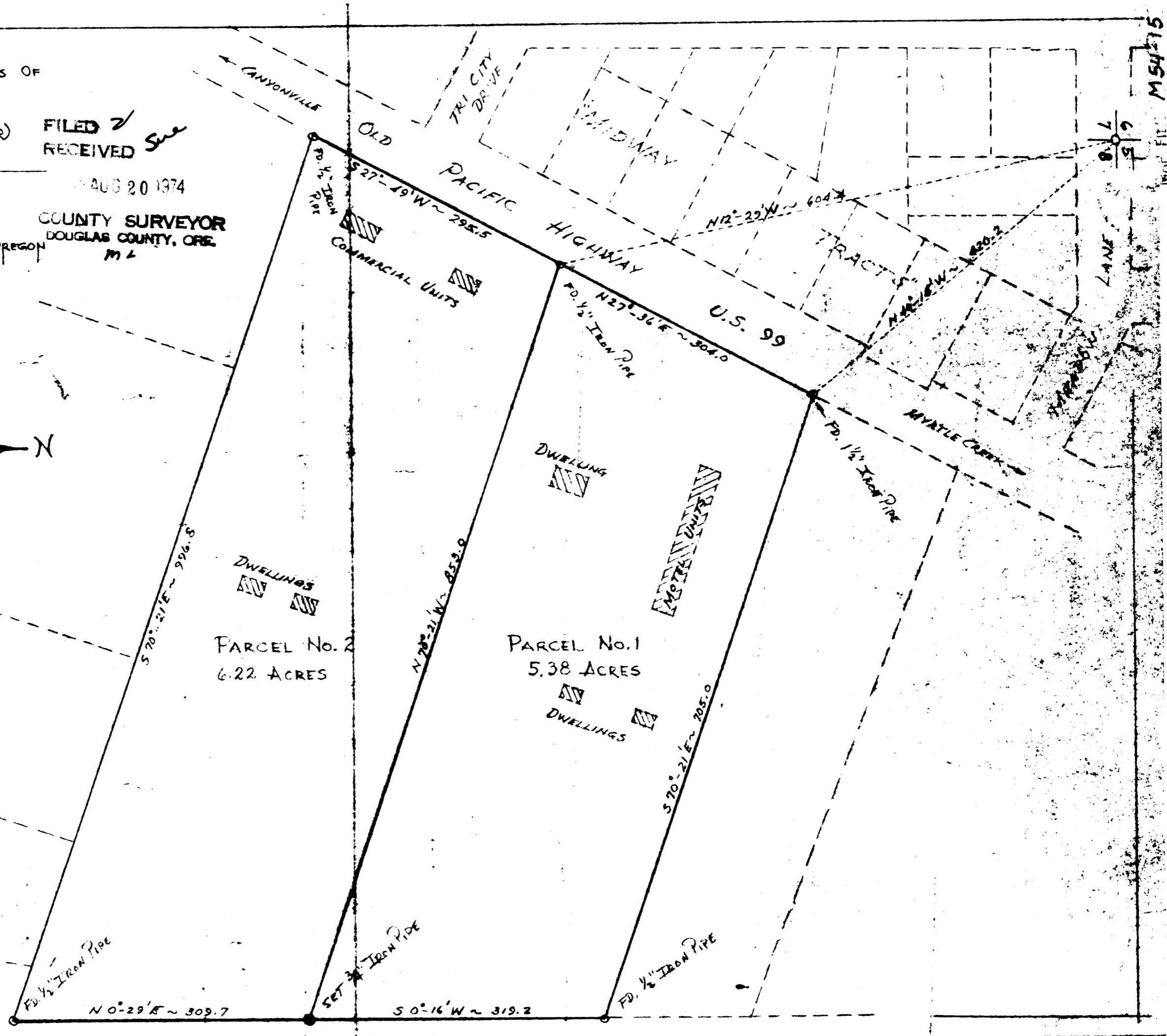
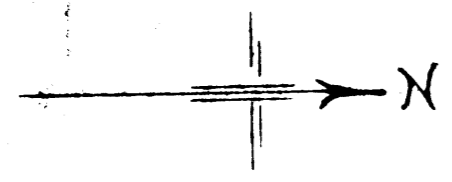
FILED *✓*
RECEIVED *See*

AUG 20 1974

COUNTY SURVEYOR
DOUGLAS COUNTY, ORE.
M.L.

MARTIN ENGINEERING SERVICE - MYRTLE CREEK, OREGON

COUNTY SURVEYORS FILE DATA
DO NOT REMOVE FROM OFFICE



SEPTEMBER 1968

MAP FILE M 54-15

M 54-15