

FILED 11-15 W

FILED  
RECEIVED

AUG 12 1961

# ALEXANDER PARCELS

SECTION 16 • T28S • R6W • W.M.

DOUGLAS COUNTY • OREGON

COUNTY SURVEYOR  
DOUGLAS COUNTY, OREGON  
m2

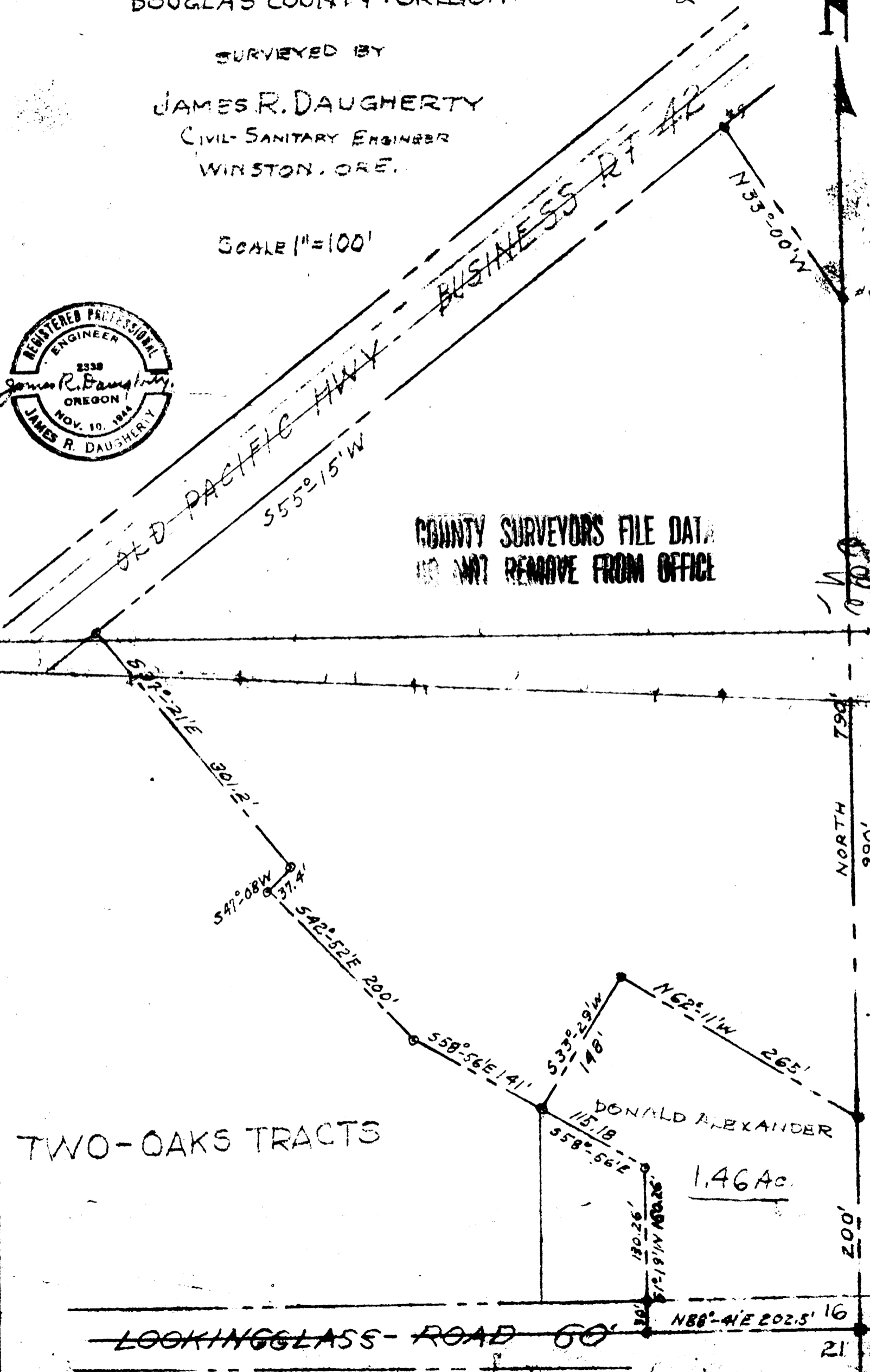
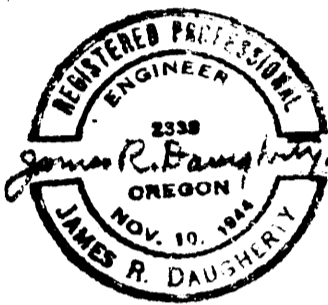
SURVEYED BY

JAMES R. DAUGHERTY

CIVIL-SANITARY ENGINEER

WINSTON, ORE.

SCALE 1"=100'



COUNTY SURVEYORS FILE DATA  
DO NOT REMOVE FROM OFFICE

TWO-OAKS TRACTS

DONALD ALEXANDER

1.46 AC

~~LOOKINGGLASS-ROAD 60'~~

N88°-41'E 202.5' 16 15  
21 22

JAN 6, 1961

M 54-14