

**SURVEY TO LOCATE 1/4 CORNER BETWEEN SECTIONS 2 & 11
T.30S., R.6W., W.M., DOUGLAS COUNTY, ORE.
FOR C.&D. LUMBER CO. (BUD JOHNSON), RIDDLE, ORE.**

BY HERBERT L. NORTHCRAFT 1/4 400' AUG. 74

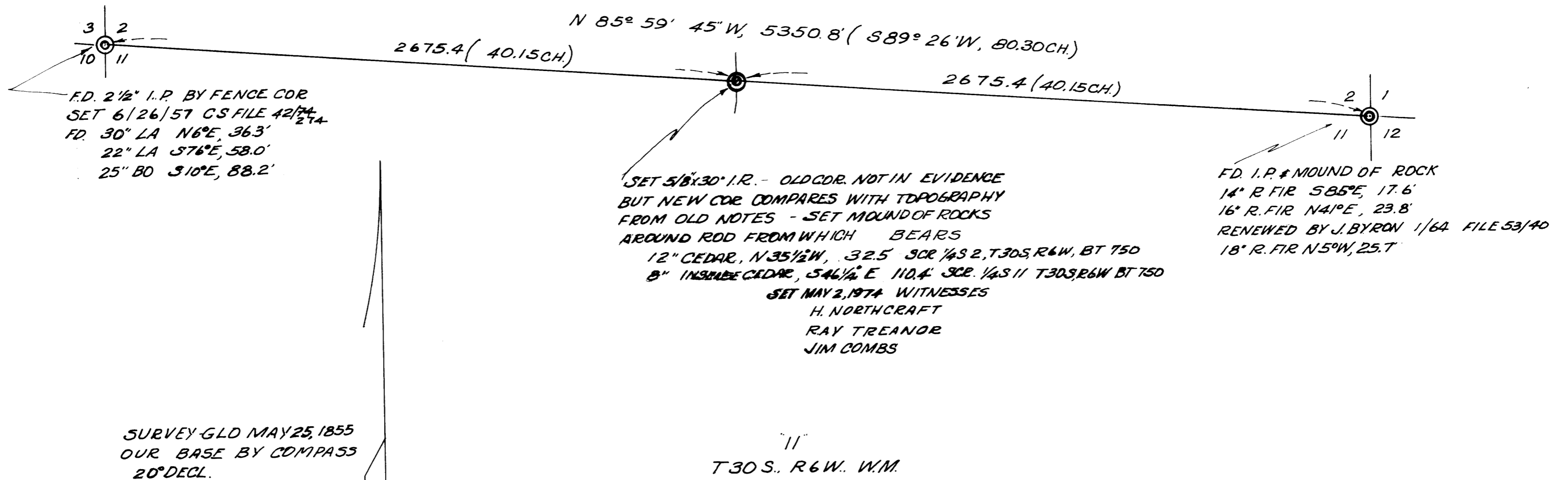
COUNTY SURVEYORS FILE 11A1
DO NOT REMOVE FROM OFFICE

FILED ✓
RECEIVED ✓

AUG 12 1974

COUNTY SURVEYOR
DOUGLAS COUNTY, ORE.
mz

MAP FILE M.54-13



REGISTERED
PROFESSIONAL
LAND SURVEYOR

Herbert L. Northcraft

OREGON
JULY 8, 1956
HERBERT L. NORTHCRAFT
750

MAP FILE M.54-13