

SURVEY IN LOTS 9 & 10, BLOCK 6 PLAT "M"

SUTHERLIN LAND & WATER CO.

LYING IN SEC 13, T25S, R6W, W.M.

SURVEY FOR:
MRS. LARRY CLARK

SURVEY BY:
BHW ENG. & SURVEYING, INC.

FILED
RECEIVED

AUG 12 1974

COUNTY SURVEYOR
DOUGLAS COUNTY, ORE.
mL

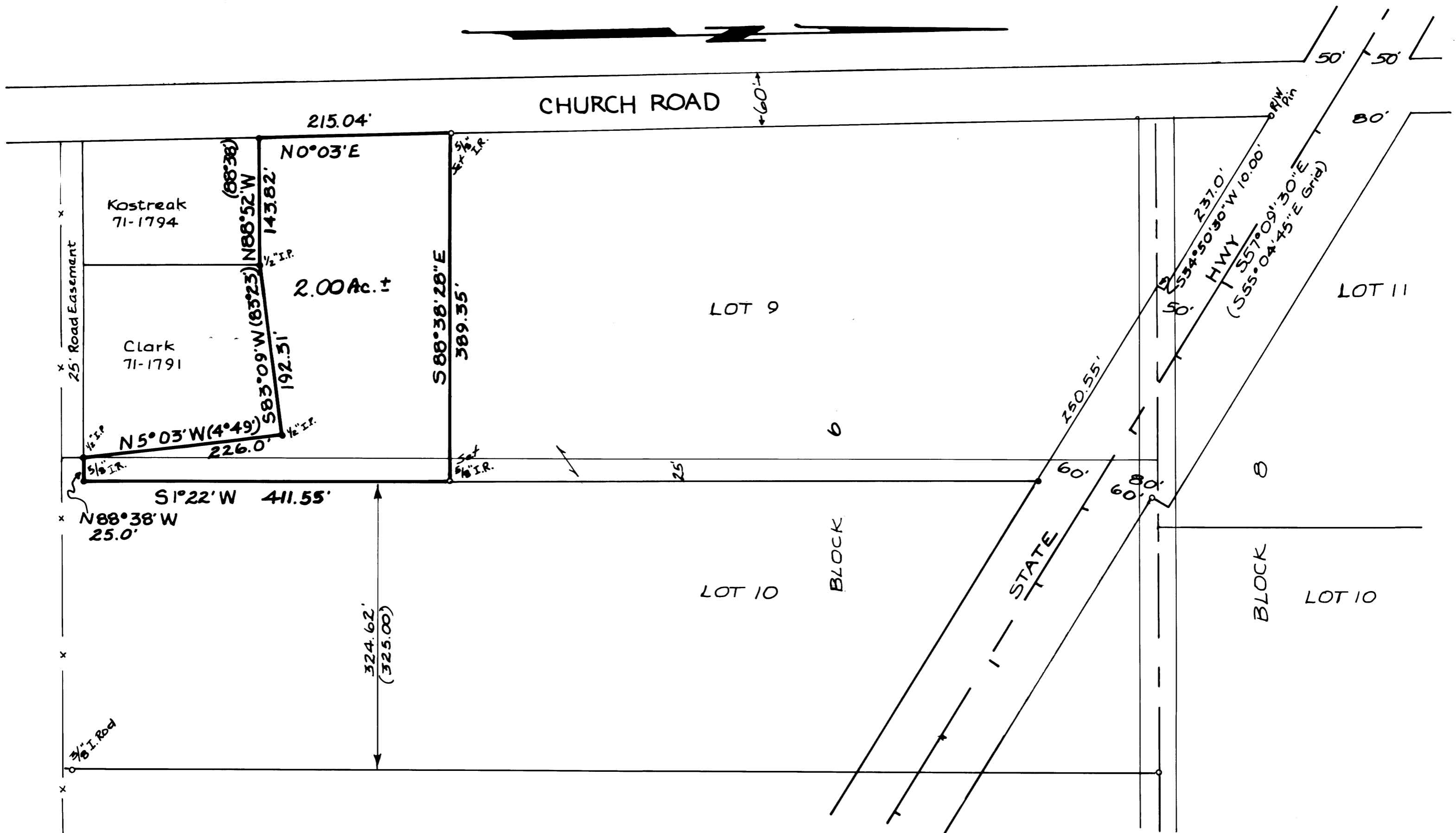
REGISTERED
PROFESSIONAL
LAND SURVEYOR

Romans E. Ware

OREGON
NOV 16 1973
ROMANSO E. WARE
1005

AUGUST 1974 SCALE: 1" = 100'
SEE M41-75 FOR BASE OF SURVEY

COUNTY SURVEYORS FILE DAY
DO NOT REMOVE FROM OFFICE



M54-12

MAP FILE M54-12