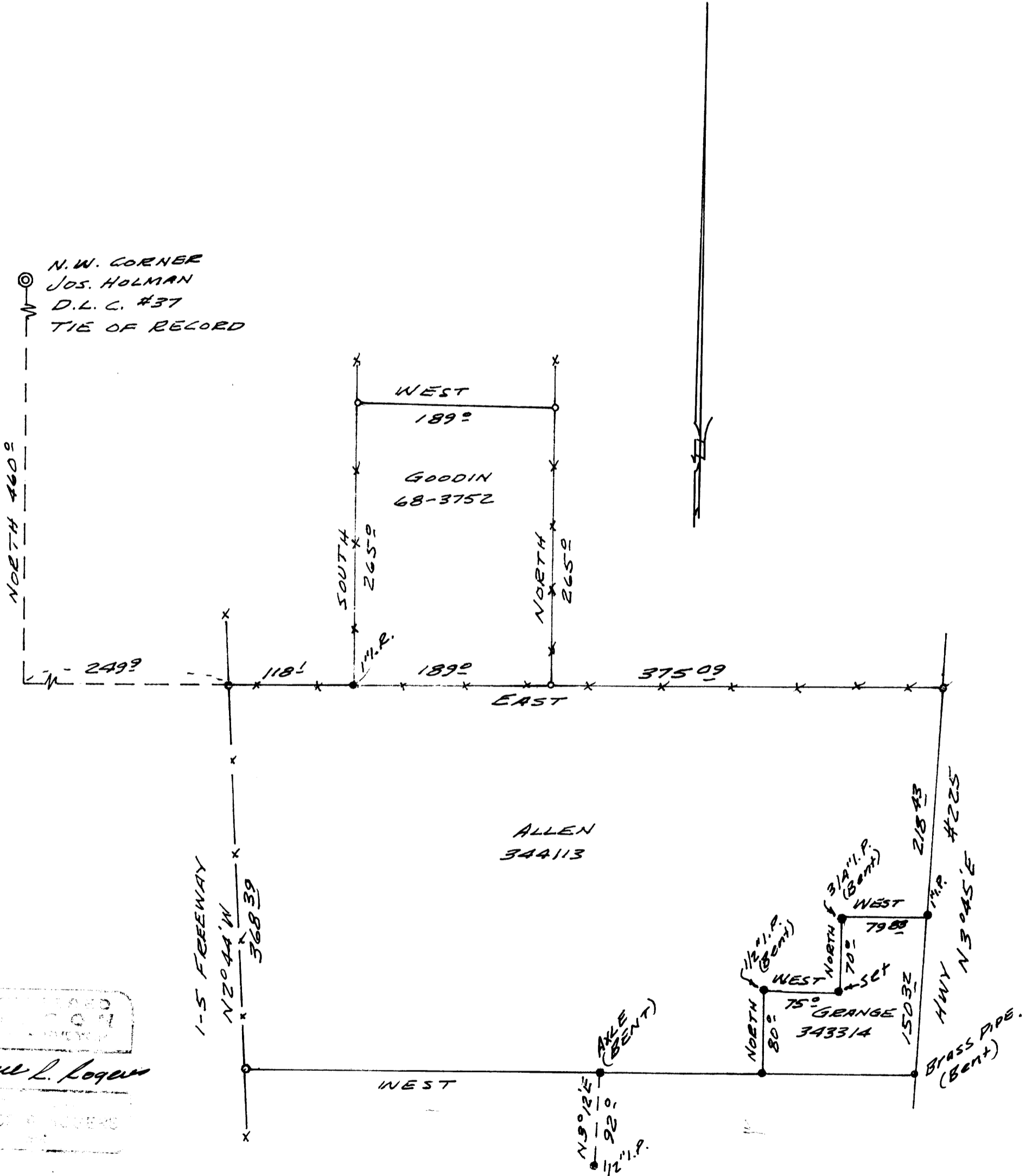


FILED ✓  
RECEIVED ✓  
JUL 31 1974

SURVEY FOR DEED DESCRIPTION  
IN SECTION 19, T.25S., R.5 W.W.M.  
FOR ORVILLE ALLEN  
BY BRUCE ROGERS  
JULY, 1974  
1" = 100'

COUNTY SURVEYOR  
DOUGLAS COUNTY, ORE.  
ML



BRUCE L. ROGERS  
COUNTY SURVEYOR  
DOUGLAS COUNTY, ORE.

● - FOUND MONUMENTS  
○ - SET 5/8" IRON ROD.  
BEARINGS BASED ON A SURVEY  
BY WM. W. ELMER M13-10