

Subdivision Of Section 32 T. 30S., R. 8W., W.M. Douglas County, Oregon

FILED 7
RECEIVED 24

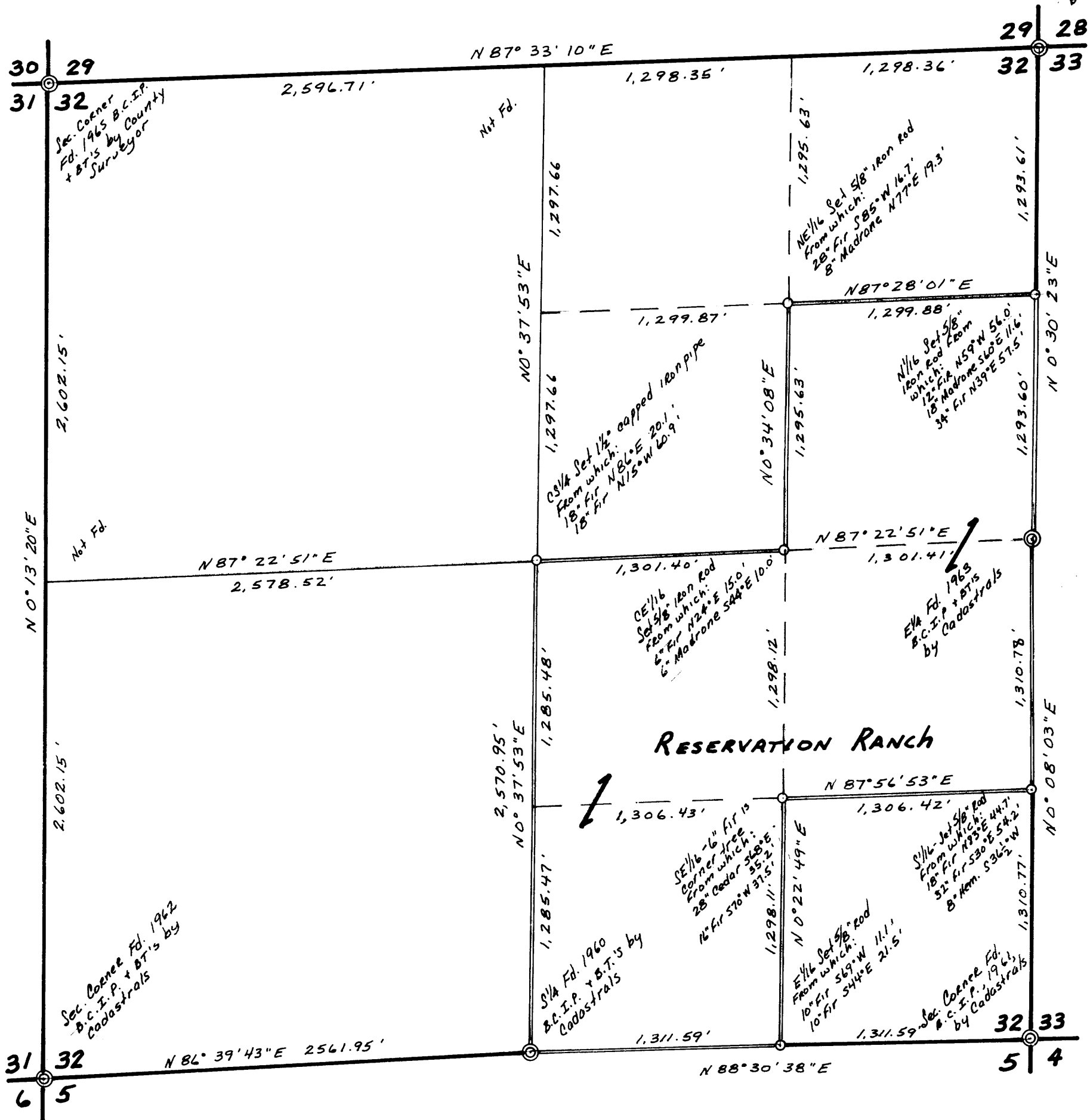
APR 11 1974

COUNTY SURVEYOR
DOUGLAS COUNTY, ORE.

Scale 1" = 600'

March 25, 1974

Sec. Corner Fd. 1963
B.C.I.P. by
Cadastrals
& BT's



Legend

- Corners Found
- Corners Set
- Lines Blazed

Survey For:
 Reservation Ranch
 P.O. Box 1094
 Coos Bay, Ore.



Bearings Based
 on Magnetic
 Dec. 1900' E.

Survey by:
 R. E. Stuntzner
 1260 Golden
 Coos Bay, Ore.



COUNTY SURVEYORS FILE DATA
 DO NOT REMOVE FROM OFFICE