

COUNTY SURVEYORS FILE DATA
DO NOT REMOVE FROM OFFICE

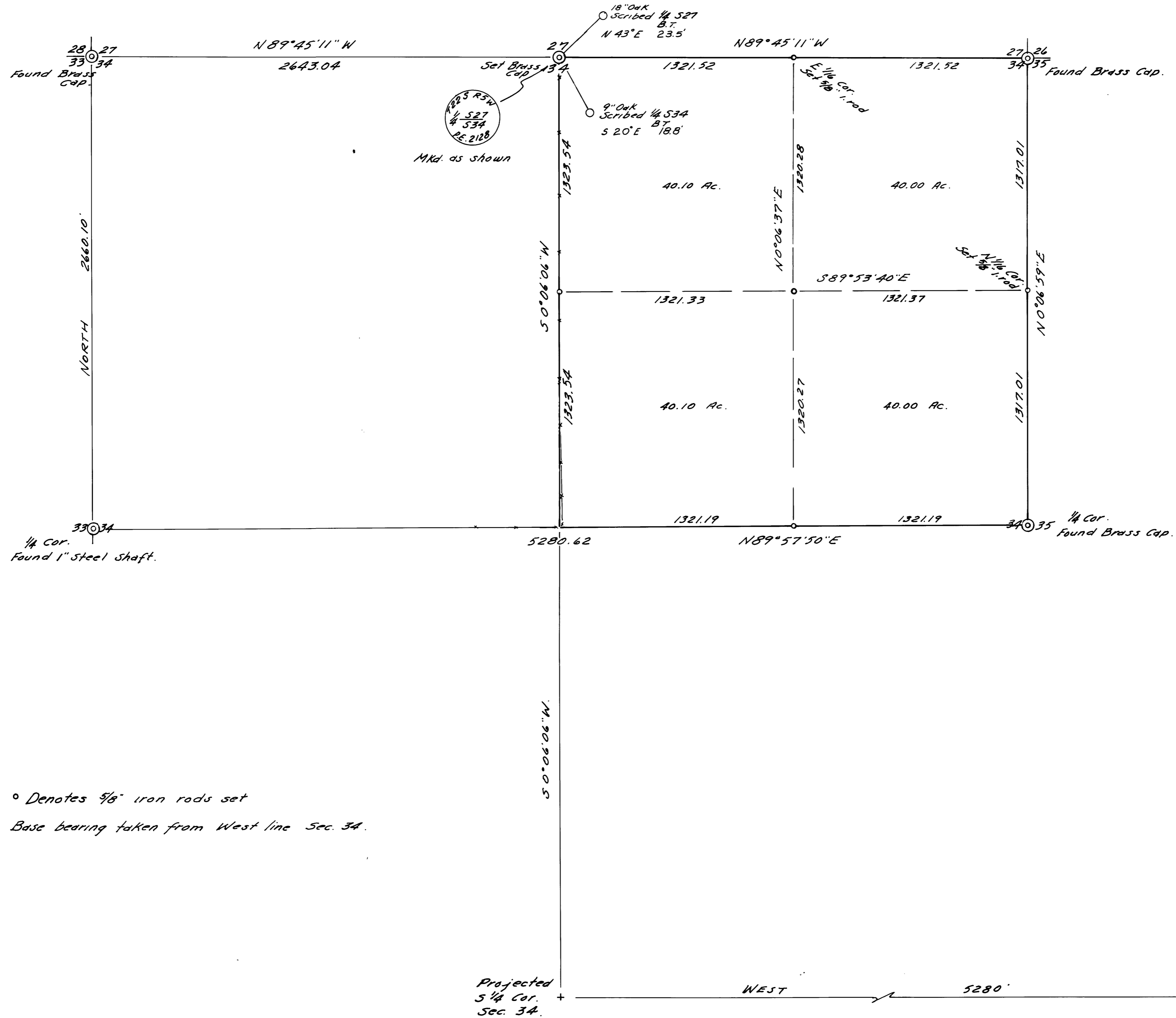
SURVEY IN SEC. 34, T22 S, R5 W. W.M.

SURVEYED FOR - REX APPLGATE
SURVEYED BY - W.S. BARNES

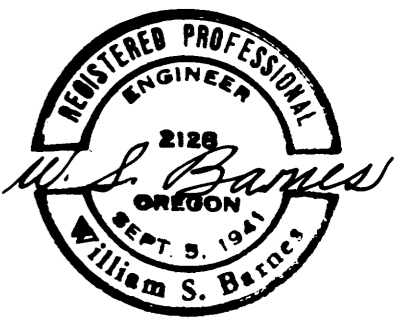
JULY 1974
SCALE 1" = 400'

FILED ✓
RECEIVED 55

JUL 26 1974
COUNTY SURVEYOR
DOUGLAS COUNTY ORE
m&



° Denotes 5/8" iron rods set
Base bearing taken from West line Sec. 34.



MAP FILE M 53-75

MAP FILE M 53-75