

SURVEY FOR PROPERTY CORNERS IN THE S.W. 1/4 SEC. 17, T. 26S., R. 3W., W.M. FOR — GLENN LONG & LONNIE BROOKS BY — BAUGHMAN SURVEYING SERVICE

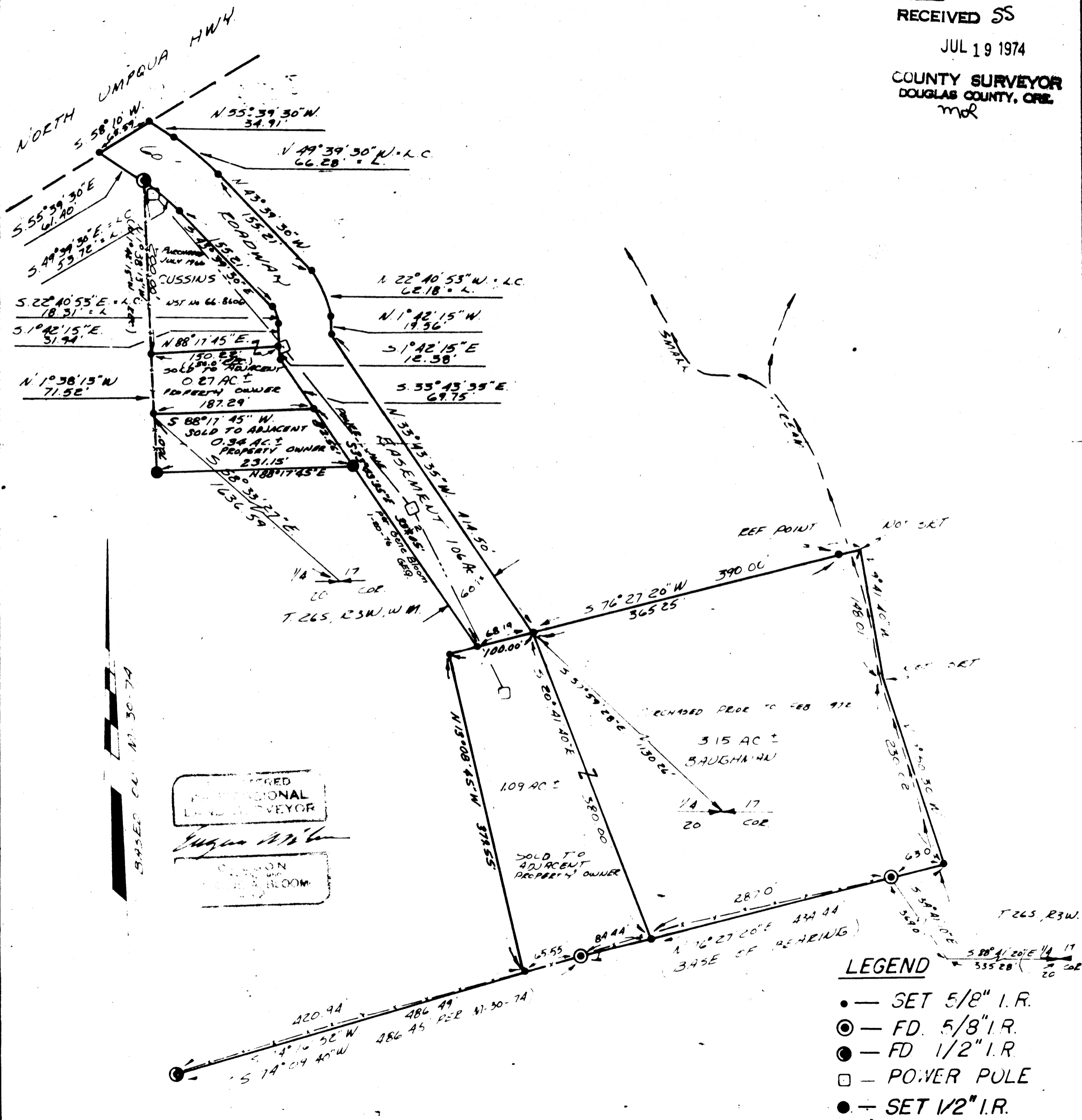
SEPTEMBER 1973
Revised JUNE 1974

SCALE 1" = 100'

FILED ✓
RECEIVED SS

JUL 19 1974

COUNTY SURVEYOR
DOUGLAS COUNTY, ORE.
mol



REGISTERED
PROFESSIONAL
LAND SURVEYOR

James M. Baughman

OFFICE
1000 N. BLOOM
T. 26S., R. 3W., W.M.

- LEGEND**
- SET 5/8" I.R.
 - ⊙ — FD 5/8" I.R.
 - — FD 1/2" I.R.
 - — POWER POLE
 - — SET 1/2" I.R.