

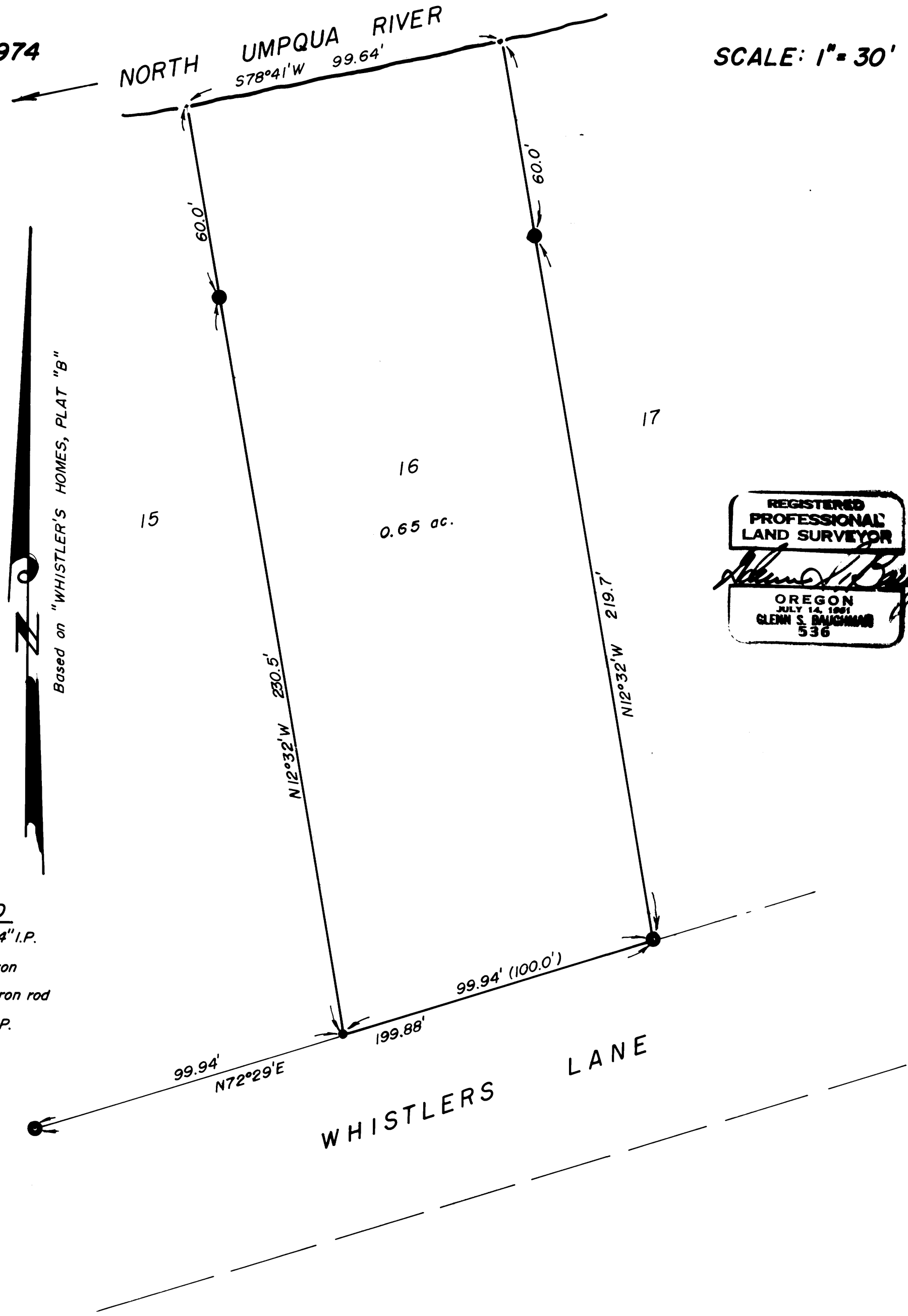
# SURVEY TO SET PROPERTY CORNERS LOT 16, WHISTLER'S HOMES, PLAT "B"

FILED ✓  
RECORDED SS  
COUNTY SURVEYOR  
DOUGLAS COUNTY, ORE.  
DO NOT REMOVE FROM OFFICE  
mal

IN SECTION 16, T.26S. R.4W.W.M. COUNTY SURVEYORS FILE DATA  
FOR: MARY ANN PARSON  
BY: BAUGHMAN SURVEYING SERVICE

JULY 1974

SCALE: 1" = 30'



Based on "WHISTLER'S HOMES, PLAT 'B'"

REGISTERED  
PROFESSIONAL  
LAND SURVEYOR

*Glenn S. Baughman*

OREGON  
JULY 14, 1961  
GLENN S. BAUGHMAN  
536

### LEGEND

- — Found 1/4" I.P.
- — Found U-iron
- — Set 5/8" iron rod
- — Found 1" I.P.