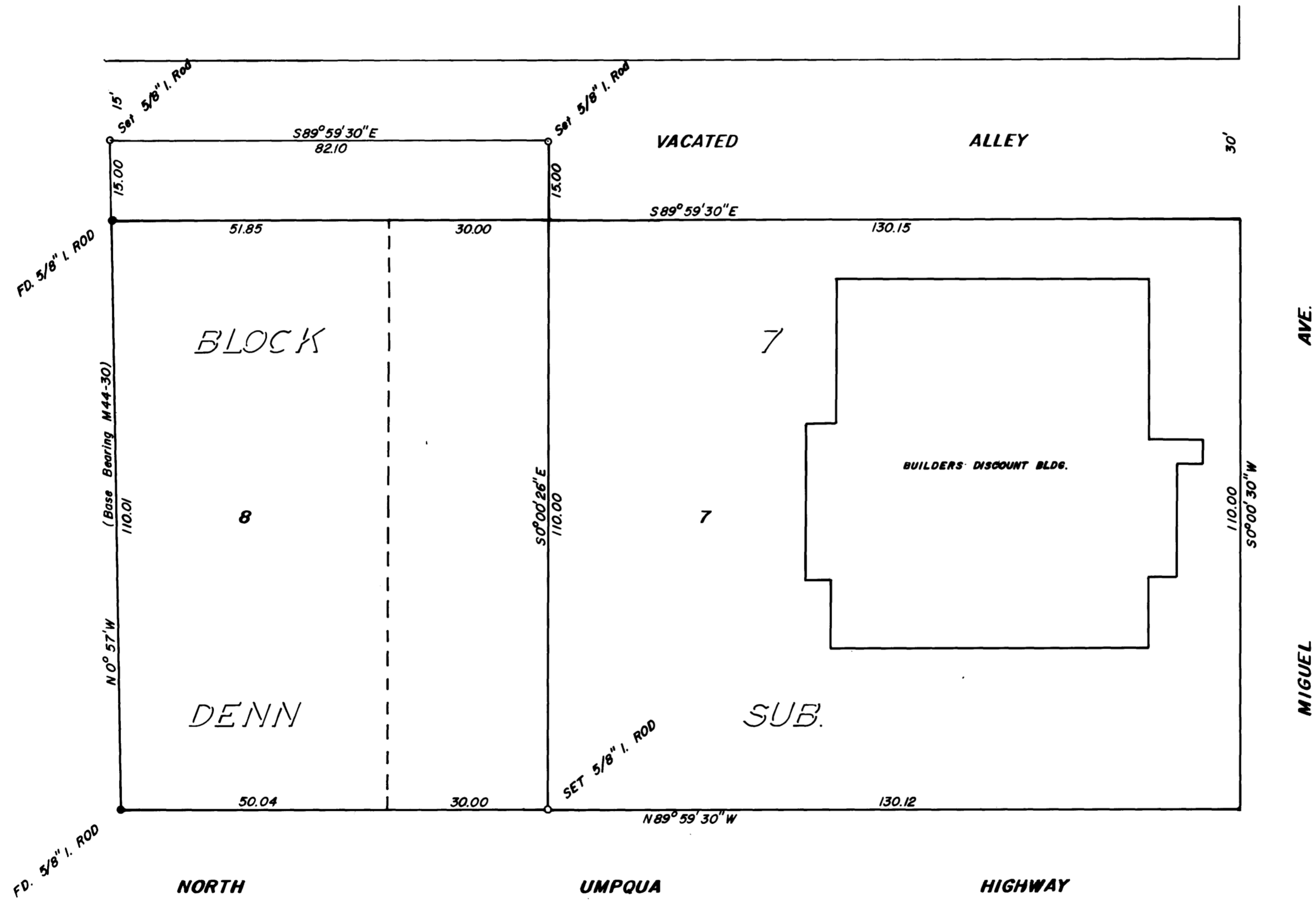


COUNTY SURVEYORS FILE DATA  
DO NOT REMOVE FROM OFFICE

SURVEY IN BLOCK 7, DENN SUBDIVISION, SECT. 20, TWP. 27 STH., RNG. 5 WEST, WILL. MER.  
Surveyed for Bill Rose by Don E. Garrett  
July 1974

Scale 1" = 20'

FILED ✓  
RECEIVED SS  
JUL 17 1974  
COUNTY SURVEYOR  
DOUGLAS COUNTY, ORE.  
mg



REGISTERED  
PROFESSIONAL  
LAND SURVEYOR  
*Don E. Garrett*  
OREGON  
JULY 14, 1961  
DON E. GARRETT  
544

MAP FILE: M. 53-624

MAP FILE: M. 53-624