

COUNTY SURVEYORS FILE DATA  
DO NOT REMOVE FROM OFFICE

# Survey in Section 36 T23S, R8W, W.M.

Surveyed for Don Made  
Surveyed by BHW Eng & Surveying  
June 1974 Scale: 1"=200'

FILED ✓  
RECEIVED SS

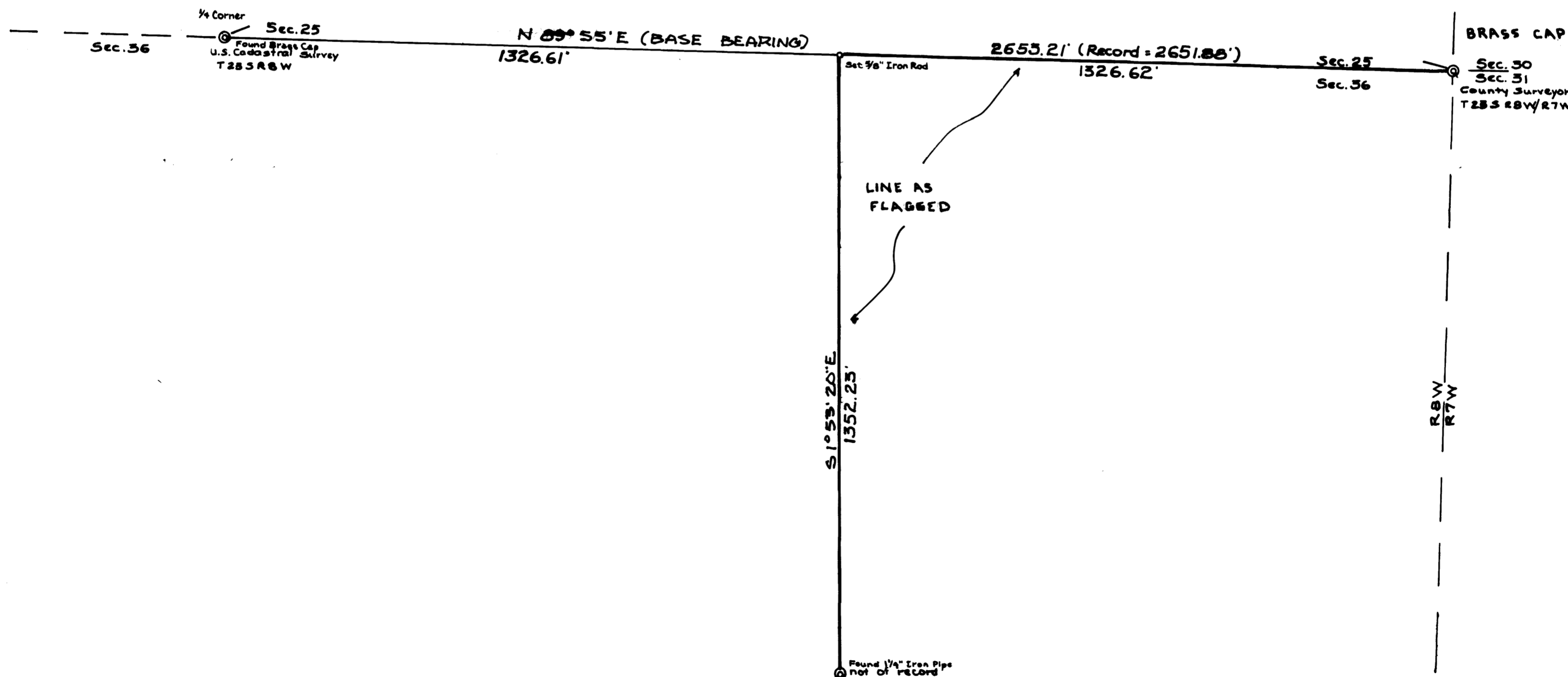
JUL 10 1974

COUNTY SURVEYOR  
DOUGLAS COUNTY, ORE  
MK

REGISTERED  
PROFESSIONAL  
LAND SURVEYOR

*Romano E. Ware*

OREGON  
NOV 1973  
ROMANSO E. WARE  
1005



MAP FILE M 53-64

MAP FILE M 53-64