

ORLIE KINGZETT  
SEC. 6, T.21S., R.4W., W.M.  
DOUGLAS COUNTY, ORE.  
SCALE: 1" = 200' JUNE 26, 1974

FILED ✓  
RECEIVED ✓

JUL 8 1974

COUNTY SURVEYOR  
DOUGLAS COUNTY, ORE.  
mz

COUNTY SURVEYORS FILE DATA  
DO NOT REMOVE FROM OFFICE

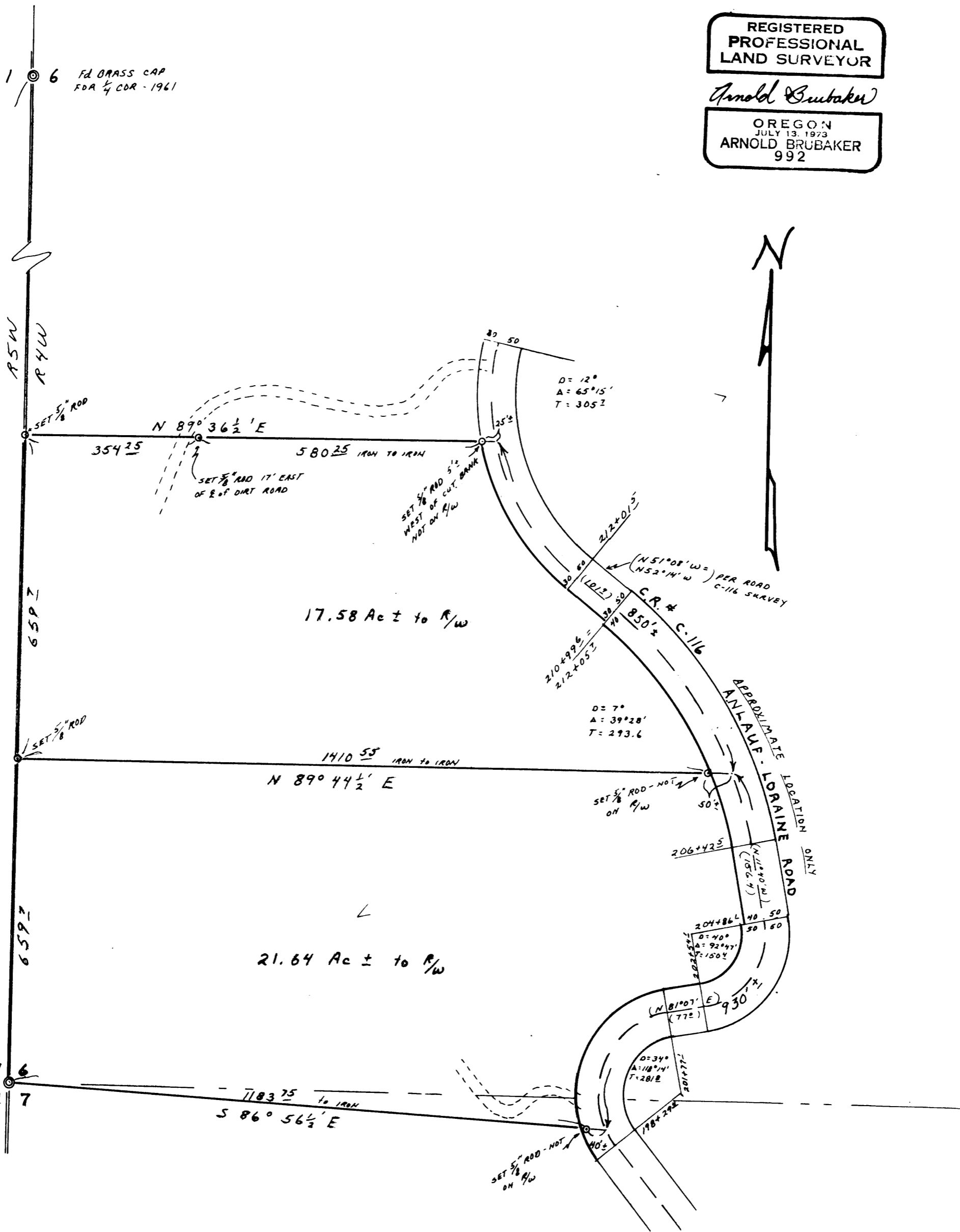
BERT W. UDELL R.P.E. #2301  
BY ARNOLD BRUBAKER R.L.S. #992

REGISTERED  
PROFESSIONAL  
LAND SURVEYOR

Arnold Brubaker

OREGON  
JULY 13, 1973  
ARNOLD BRUBAKER  
992

BASIS OF BEARING  
ASSUMED NORTH PER ORIG. G.L.O. NOTES.  
2638.8



FD BRASS CAP 12 7  
1961 - SURVEYOR'S  
OFFICE