

COUNTY SURVEYORS FILE DATA
DO NOT REMOVE FROM OFFICE

FILED
RECEIVED 74

JUN 24 1974

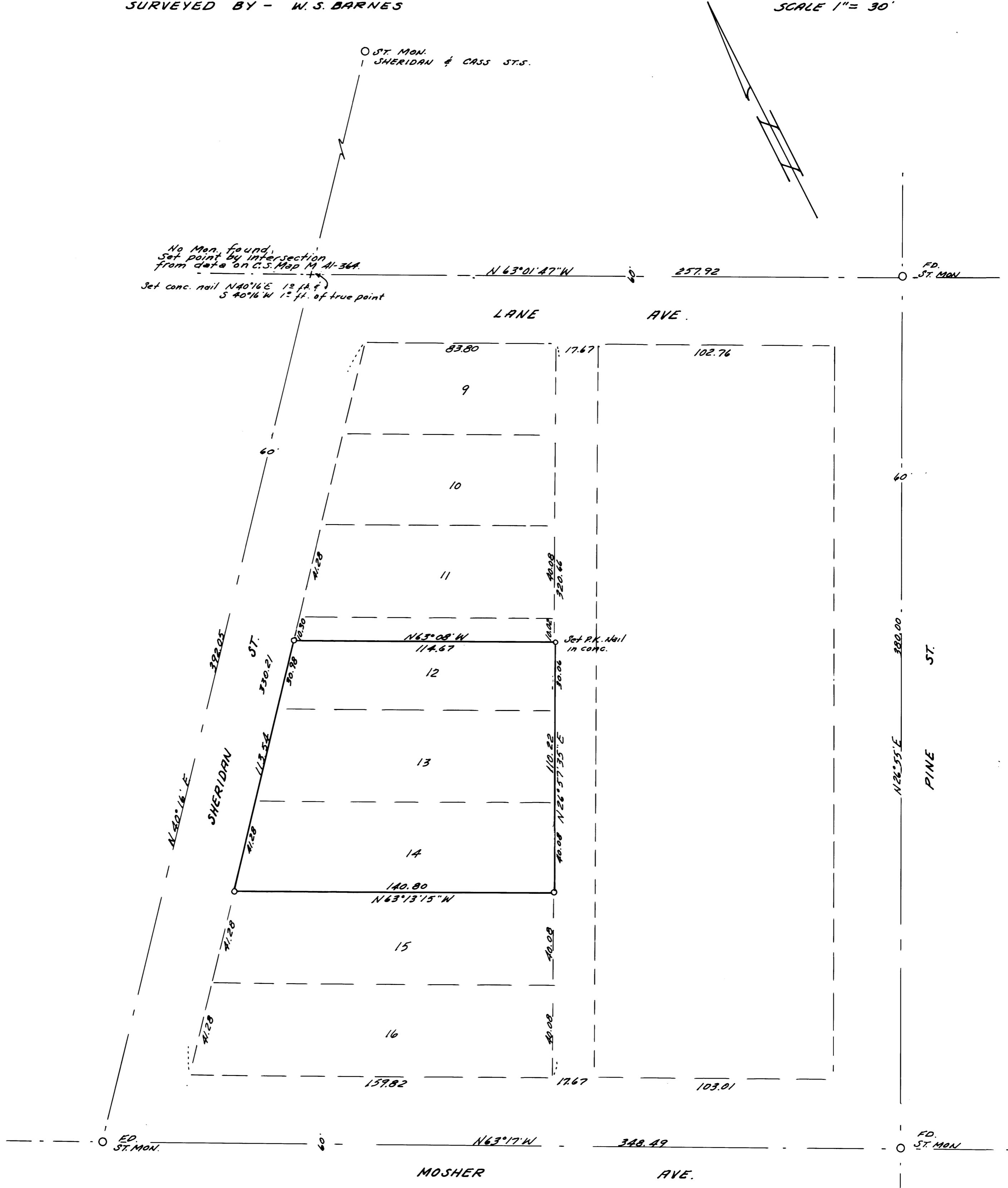
COUNTY SURVEYOR
DOUGLAS COUNTY, ORE.
mcl

SURVEY IN LOTS 12, 13 & 14, BLOCK 55, RAILROAD ADD. ROSEBURG, ORE.

SEC. 24, T27S, R6W, W.M.

SURVEYED FOR - ROSEBURG DISPOSAL CO.
SURVEYED BY - W.S. BARNES

JUNE 1974
SCALE 1" = 30'



o 5/8" iron rods set.
Base bearing taken from Sheridan St.
Refr. C.S. File M41-364.

