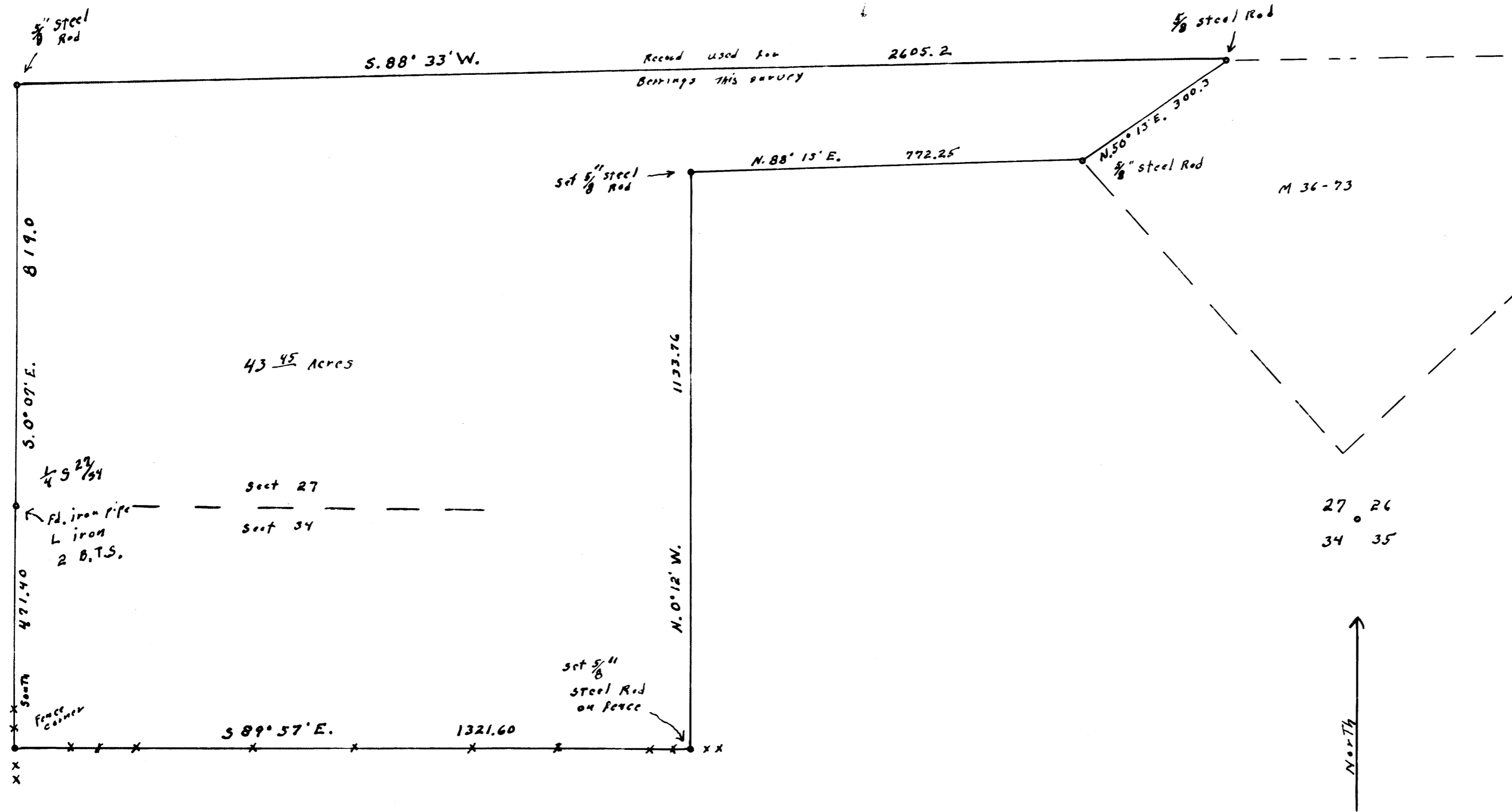


M 35-12



FILED ✓  
 RECORD ✓ SS  
 COUNTY SURVEYOR  
 CLATSOP COUNTY, OREGON  
 md

MAP FILE M 53-57

SECTS. 27 + 34 T. 21 S., R. 5 W W.M.

for

RAY + YVONNE CHOATE

DRAIN, OREG.

Scale 1" = 200'

June 1974

REGISTERED  
 OREGON  
 LAND SURVEYOR  
 Wilford N. Haines  
 MAY 7, 1948  
 WILFORD N. HAINES  
 239

MAP FILE M 53-57

COPIES AVAILABLE FOR OFFICE