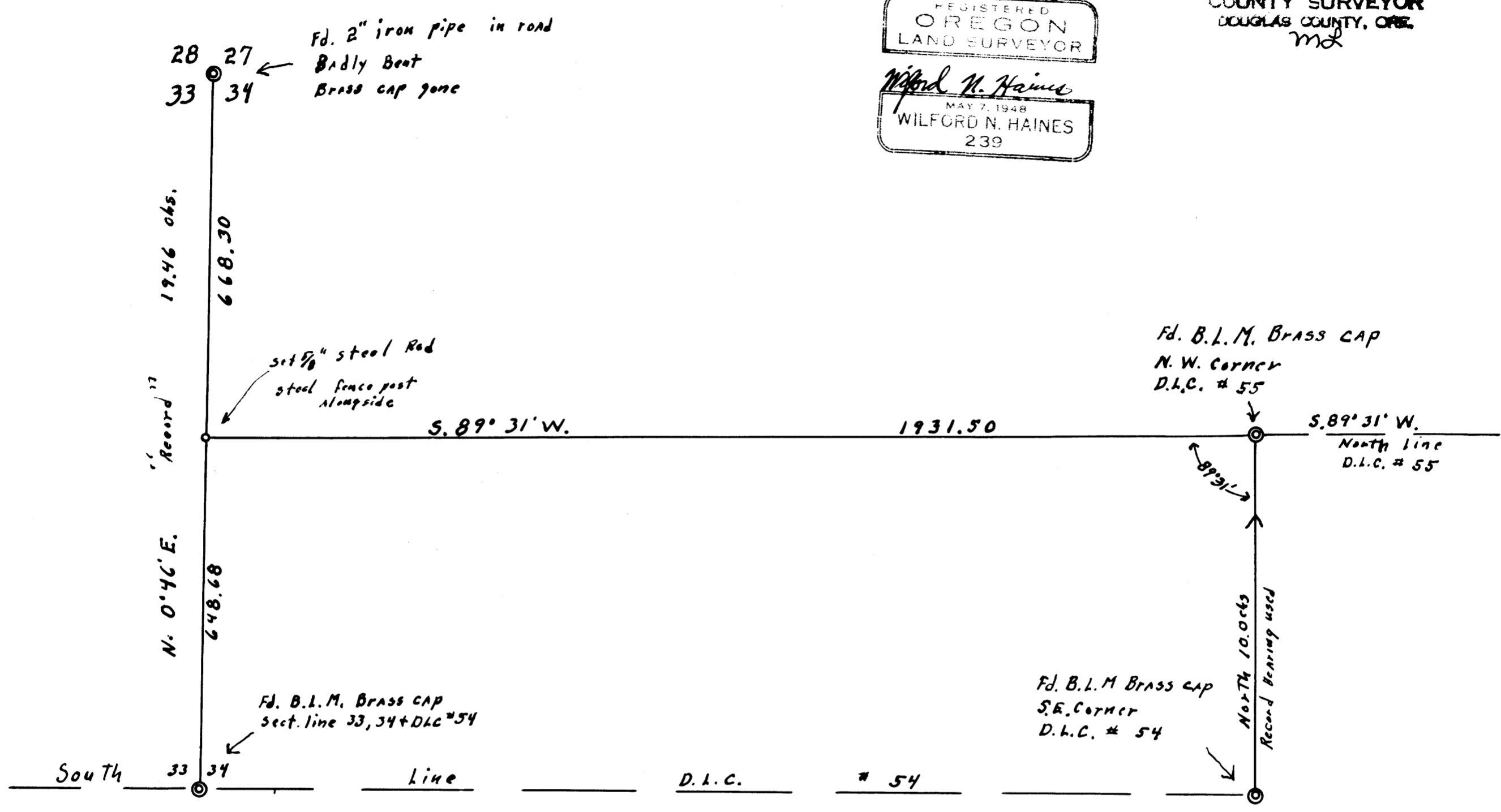


FILED *✓*
RECEIVED *SP*

JUN 21 1974

COUNTY SURVEYOR
DOUGLAS COUNTY, ORE.
md

REGISTERED
OREGON
LAND SURVEYOR
Wilford N. Haines
MAY 7, 1948
WILFORD N. HAINES
239



SECT. 34 T.22S., R.8W. W.M.

for
Garry-Beck Corp.
scale: 1" = 200'

EIKTON, OREGON.
MAY 30, 1974

COUNTY SURVEYOR
DOUGLAS COUNTY, OREGON