

COUNTY SURVEYORS FILE DATA
DO NOT REMOVE FROM OFFICE

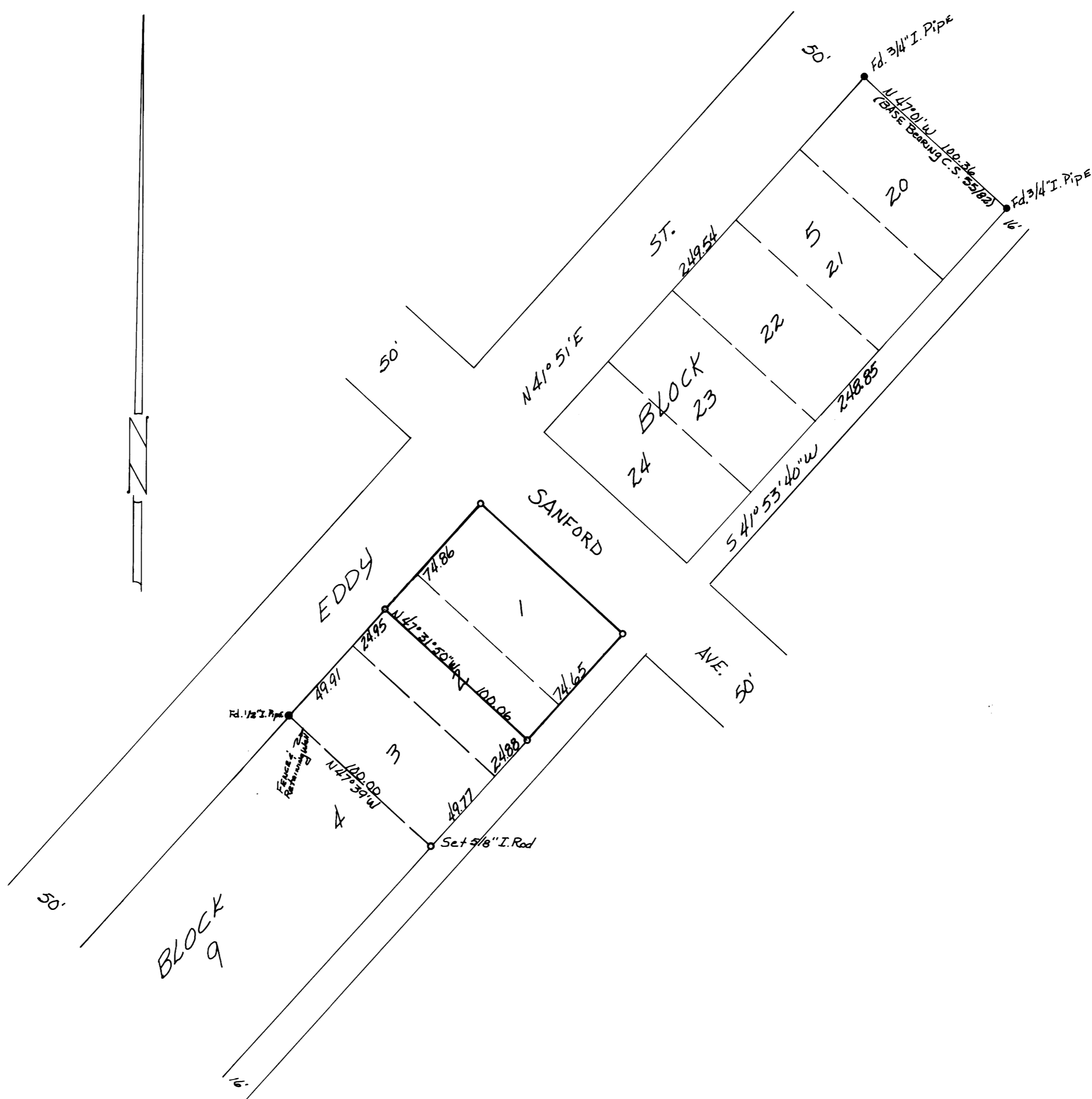
FILED ✓
RECEIVED *me*

JUN 20 1974

COUNTY SURVEYOR
DEPARTMENT COUNTY ORE.
me

SURVEY IN LOTS 1 & 2, BLOCK 9, MILLER'S ADDITION TO ROSEBURG ORE.
Section 25, Township 27 South, Range 6 West, Willamette Meridian
Surveyed for George Newman by Don E. Garrett
June, 1974
o Set 5/8" Iron Rod

Scale 1" = 50'



REGISTERED
PROFESSIONAL
LAND SURVEYOR
Don E. Garrett
OREGON
JULY 14, 1961
DON E. GARRETT
544