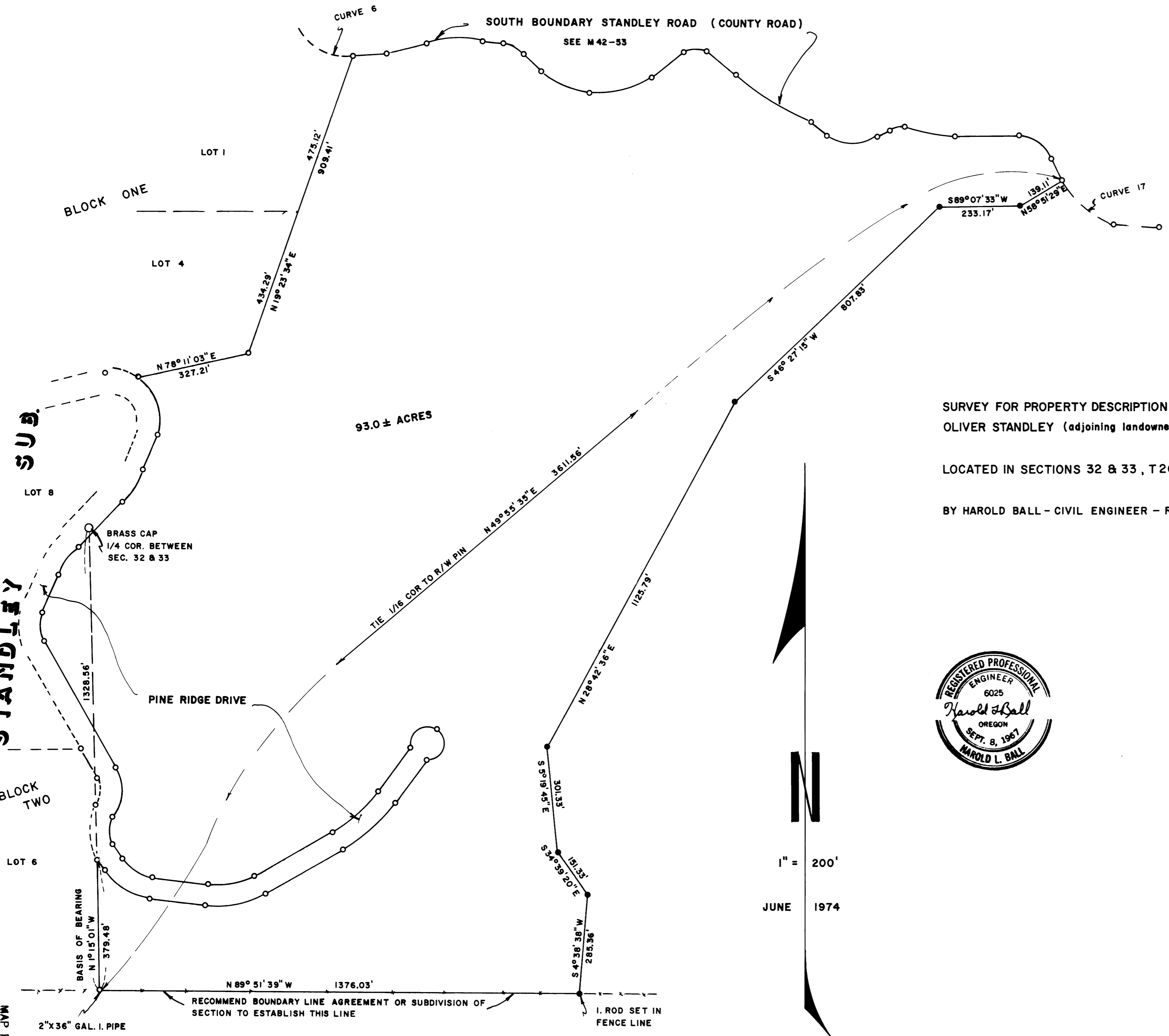
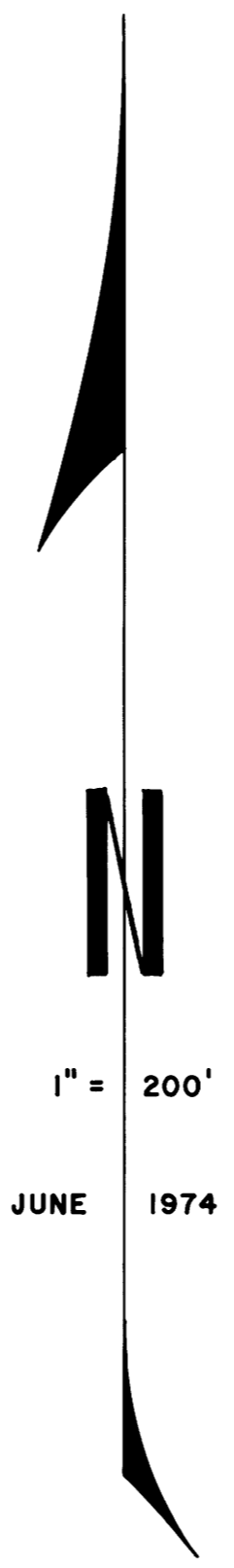


FILED ✓  
 RECEIVED SS  
 JUN 19 1974  
 COUNTY SURVEYOR  
 DOUGLAS COUNTY, ORE  
 ml

MAP FILE M-53-54



SURVEY FOR PROPERTY DESCRIPTION FOR SALE OF 93 ACRE PARCEL BY A.J. STANDLEY TO  
 OLIVER STANDLEY (adjoining landowners)  
 COUNTY SURVEYORS FILE DATA  
 DO NOT REMOVE FROM OFFICE  
 LOCATED IN SECTIONS 32 & 33, T26S, R3W, W.M.  
 BY HAROLD BALL - CIVIL ENGINEER - ROSEBURG



JUNE 1974

2" X 36" GAL. I. PIPE  
 S 1/16 COR BETWEEN S 32 & S 33  
 SEE VOL 14, PG 29

○ FOUND 5/8" IRON ROD OR AS SHOWN  
 ● SET 5/8" IRON ROD

MAP FILE M-53-54