

SURVEY TO SET PROPERTY CORNERS

IN SECTION 12, T.24S., R.5W.W.M.

FOR: FRED HARRINGTON

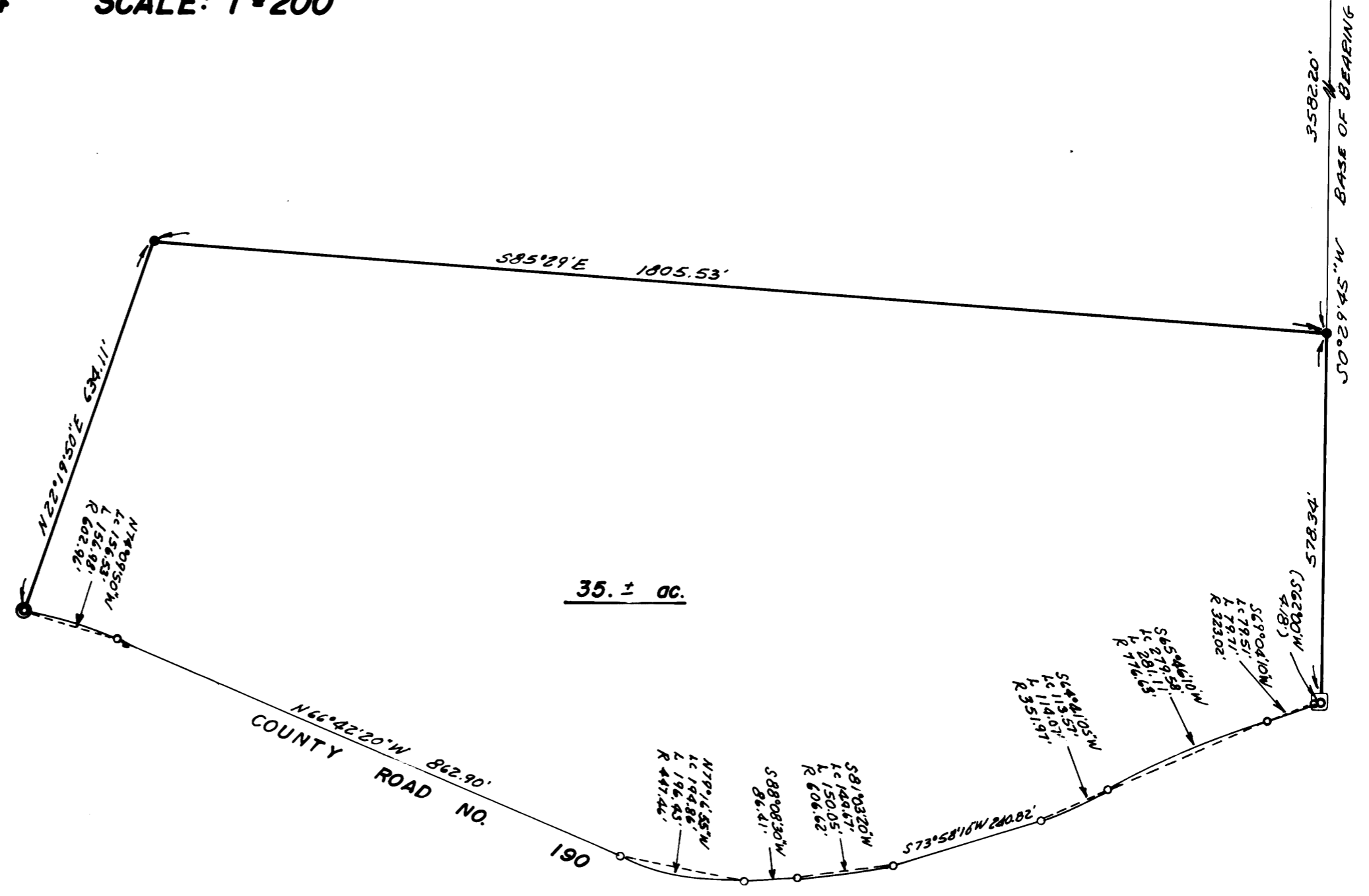
BY: BAUGHMAN SURVEYING SERVICE

COUNTY SURVEYORS FILE DATA
DO NOT REMOVE FROM OFFICE

JUNE 1974 SCALE: 1"=200'

FILED ✓
RECORDED SS
COUNTY CLERK FOR
BOYD COUNTY, ORE.
JMB

1/4 COR. 6



LEGEND

- — Set 1/2" iron rod
- ◻ — Found fence post, per M-52-3
- ⊙ — Found 5/8" iron rod, per M-52-3
- ⊕ — One-Quarter corner, per M-52-3
- — 5/8" iron rod set per M-52-3

REGISTERED
PROFESSIONAL
LAND SURVEYOR
Glenn S. Baughman
OREGON
JULY 14, 1961
GLENN S. BAUGHMAN
536

MAP M 53-53

MAP M 53-53