

SURVEY TO SET PROPERTY CORNERS IN LOTS 3, 4, 5 & 6 WATTS ACRES PLAT 2 SECTION 11, T.28S.R.6W.W.M. FOR: EUGENE MARLEY

JUNE 1974
SCALE: 1" = 50'

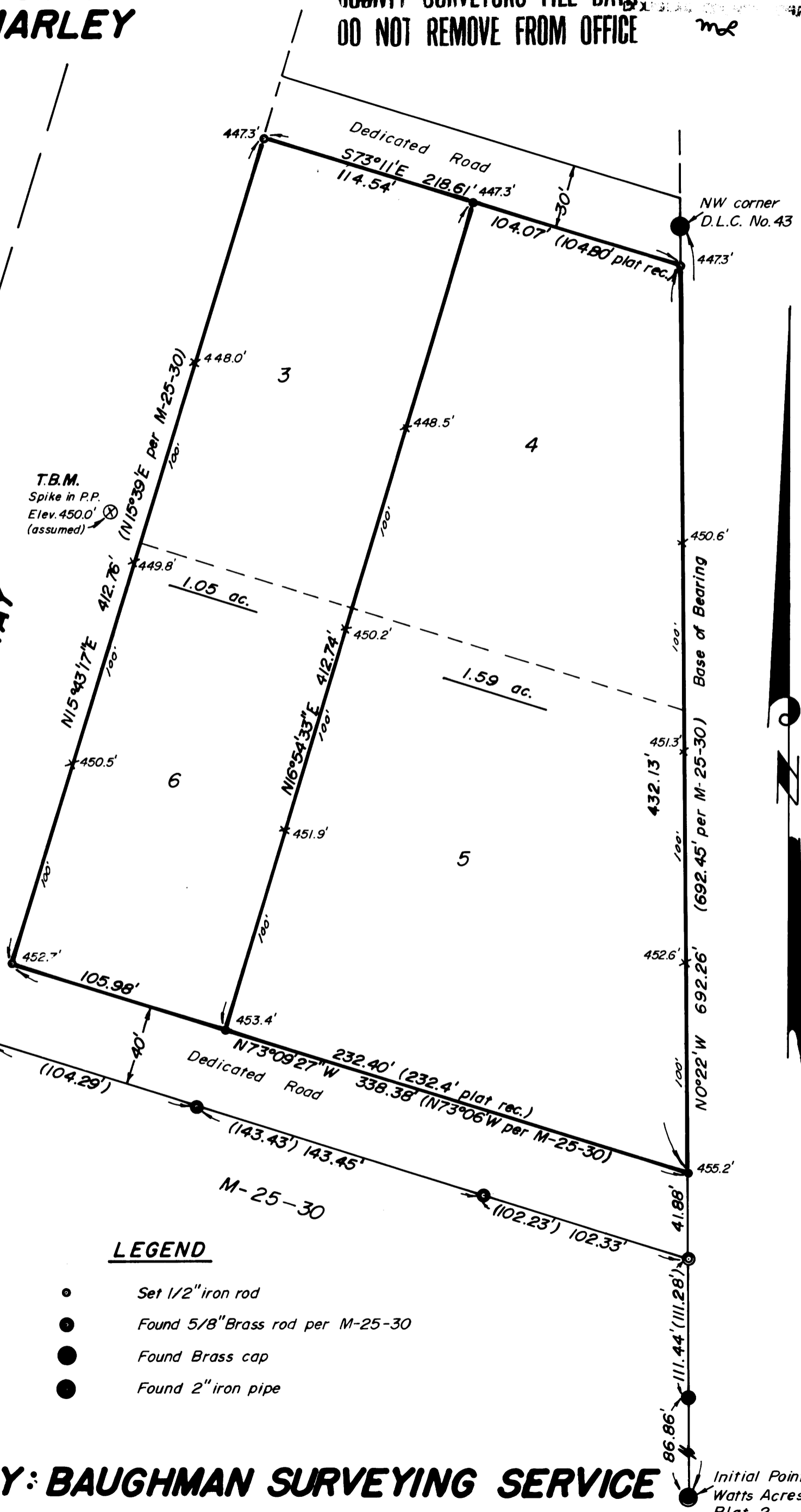
COUNTY SURVEYORS FILE DATA
DO NOT REMOVE FROM OFFICE

REGISTERED
PROFESSIONAL
LAND SURVEYOR

Eugene A. Bloom

OREGON
MAY 13, 1960
EUGENE A. BLOOM
492

PACIFIC
(U.S. 99)
HIGHWAY



LEGEND

- Set 1/2" iron rod
- Found 5/8" Brass rod per M-25-30
- Found Brass cap
- Found 2" iron pipe

BY: BAUGHMAN SURVEYING SERVICE

Initial Point
Watts Acres
Plat 2