

# SURVEY FOR DESCRIPTION FOR PROPERTY SETTLEMENT

IN SECTIONS 29 & 32, T.25S. R.6W. W.M.

COUNTY SURVEYORS FILE DATA  
DO NOT REMOVE FROM OFFICE

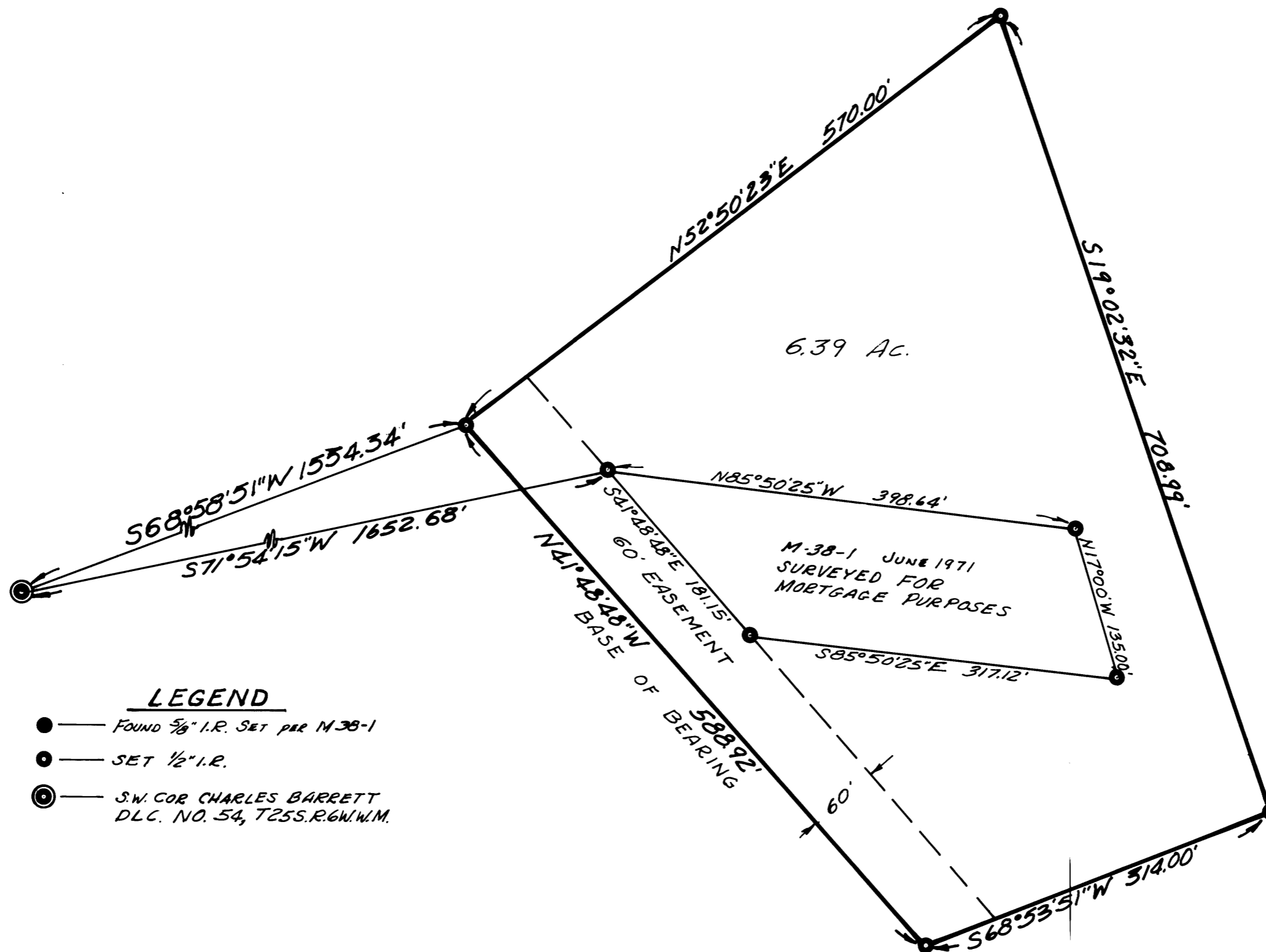
FOR: RALPH WIESE

BY: BAUGHMAN SURVEYING SERVICE

JUNE 1974

SCALE: 1"=100'

FILED ✓  
JUN 14 1974  
CLERK OF COUNTY CLERK  
MORRIS COUNTY, ORE.  
md



### LEGEND

- — FOUND 5/8" I.R. SET PER M-38-1
- — SET 1/2" I.R.
- ⊙ — S.W. COR CHARLES BARRETT  
DLC. NO. 54, T25S. R.6W. W.M.

BASED ON M-38-1

REGISTERED  
PROFESSIONAL  
LAND SURVEYOR

*Glenn S. Baughman*

OREGON  
JULY 14, 1966  
GLENN S. BAUGHMAN  
536

MAP FILE M53-44

MAP FILE M53-44