

COUNTY SURVEYORS FILE DATA
DO NOT REMOVE FROM OFFICE

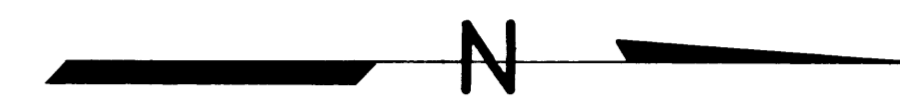
SURVEY FOR CITY OF ROSEBURG SEC. 12, T. 27 S., R. 6 W., W. M.

FILED *✓*
RECEIVED *✓*

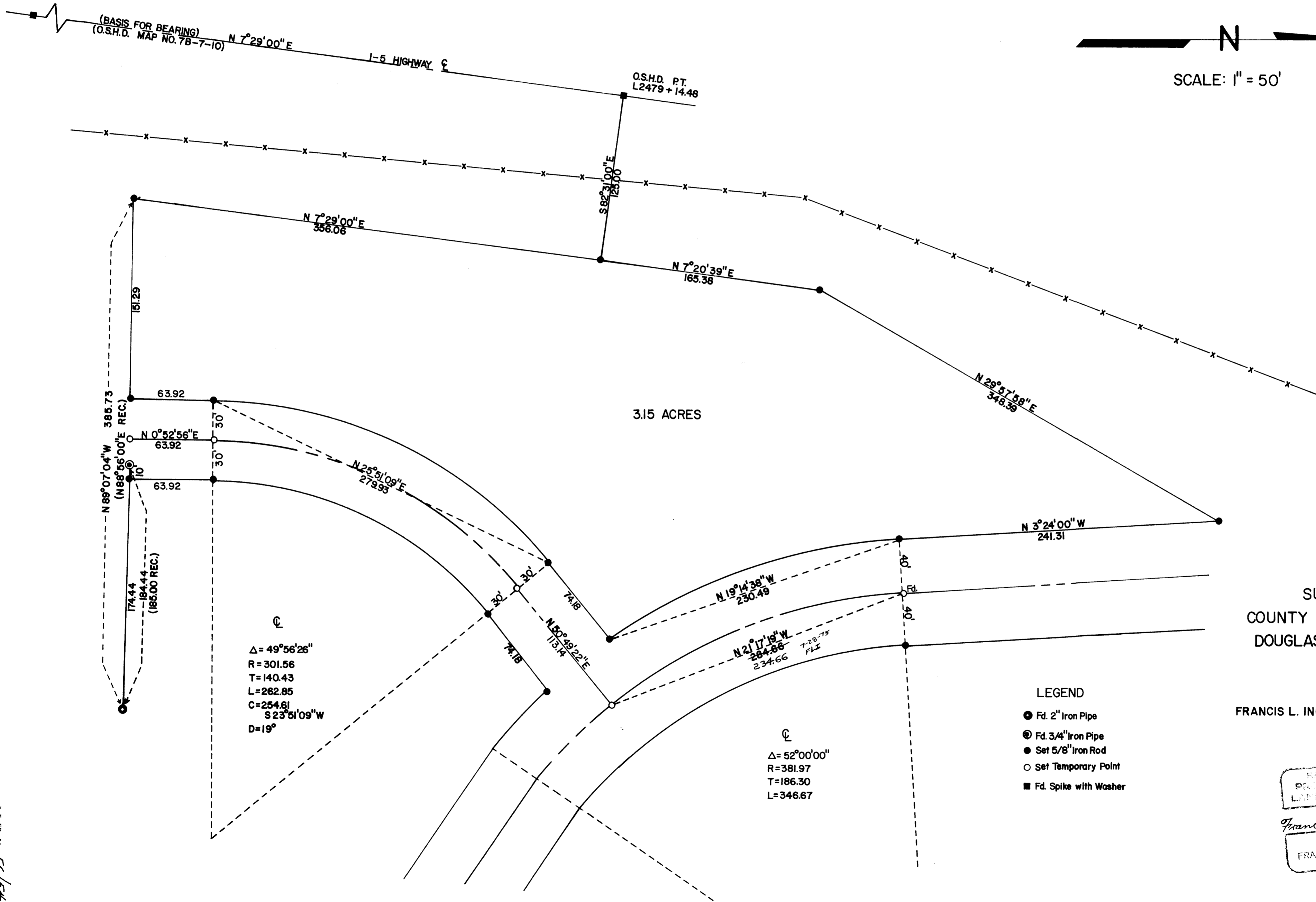
JUN 11 1974

COUNTY SURVEYOR
DOUGLAS COUNTY, ORE.
ml

S. File No. 56/54
MAP FILE M. 53 - 39



SCALE: 1" = 50'



3.15 ACRES

SURVEYED BY
COUNTY SURVEYOR'S OFFICE
DOUGLAS COUNTY, OREGON

JUNE, 1974
FRANCIS L. INGRAM COUNTY SURVEYOR

- LEGEND**
- Fd. 2" Iron Pipe
 - ⊙ Fd. 3/4" Iron Pipe
 - Set 5/8" Iron Rod
 - Set Temporary Point
 - Fd. Spike with Washer

REGISTERED
PROFESSIONAL
LAND SURVEYOR
Francis L. Ingram
OREGON
JUL 11 1963
FRANCIS L. INGRAM
902

S. File No. 56/54
MAP FILE M. 53 - 39