

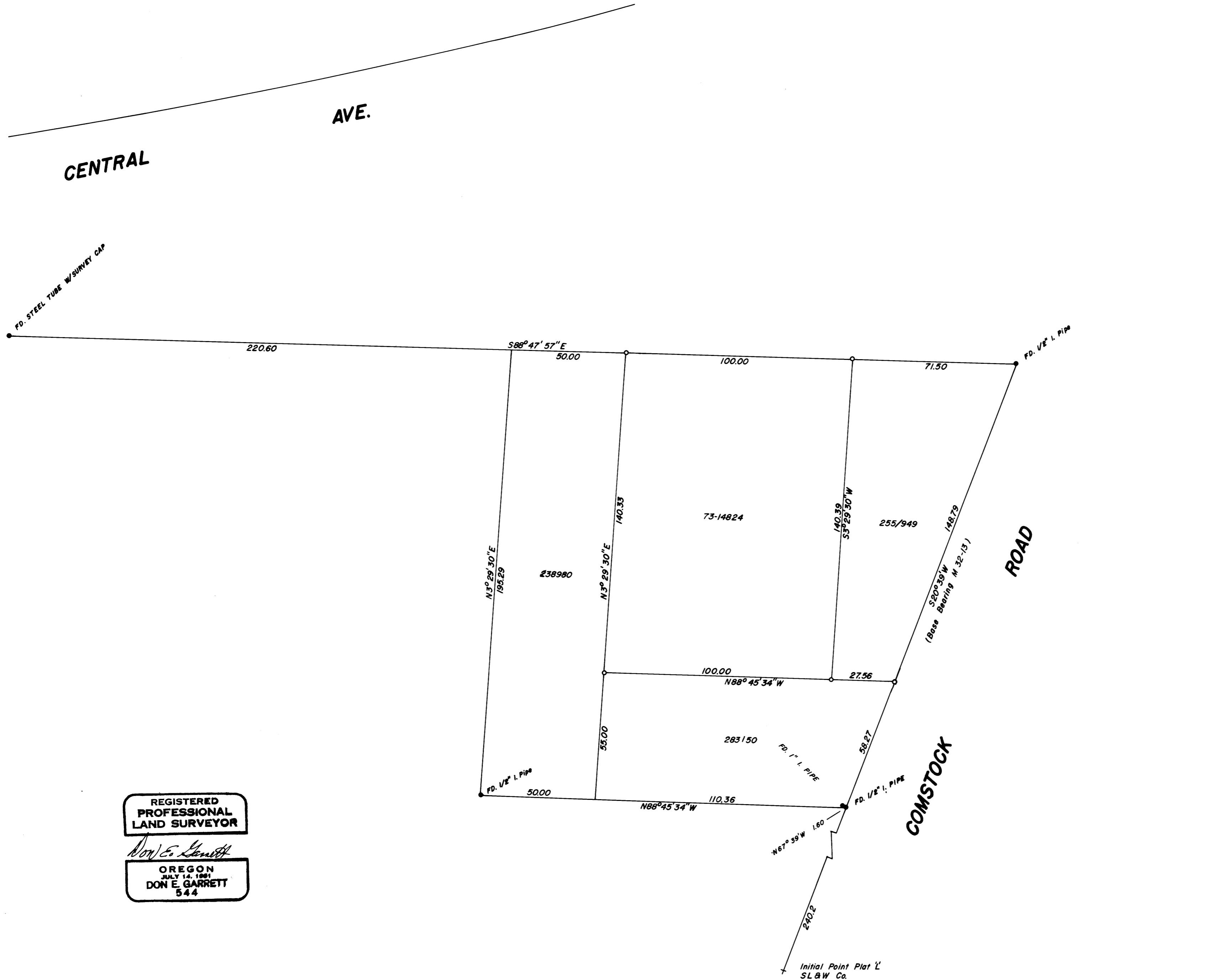
COUNTY SURVEYORS FILE DATA
DO NOT REMOVE FROM OFFICE

SURVEY IN LOTS 4 & 5 PLAT L SUTHERLIN LAND & WATER CO. SEC. 19 TWP. 25 S. RNG. 5 W. W.M.
Surveyed for Walter Nuckolls by Don E. Garrett
June 1974

0 - SET 5/8" I. ROD

Scale 1" = 30'

FILED ✓
RECEIVED ✓
JUN 5 1974
COUNTY SURVEYOR
DOUGLAS COUNTY, ORE.
ML



REGISTERED
PROFESSIONAL
LAND SURVEYOR

Don E. Garrett

OREGON
JULY 14, 1961
DON E. GARRETT
544

MAP FILE M52 - 36

MAP FILE 7733 - 36