

COUNTY SURVEYORS FILE DATA
DO NOT REMOVE FROM OFFICE

FILED *v*
RECEIVED *7/7*

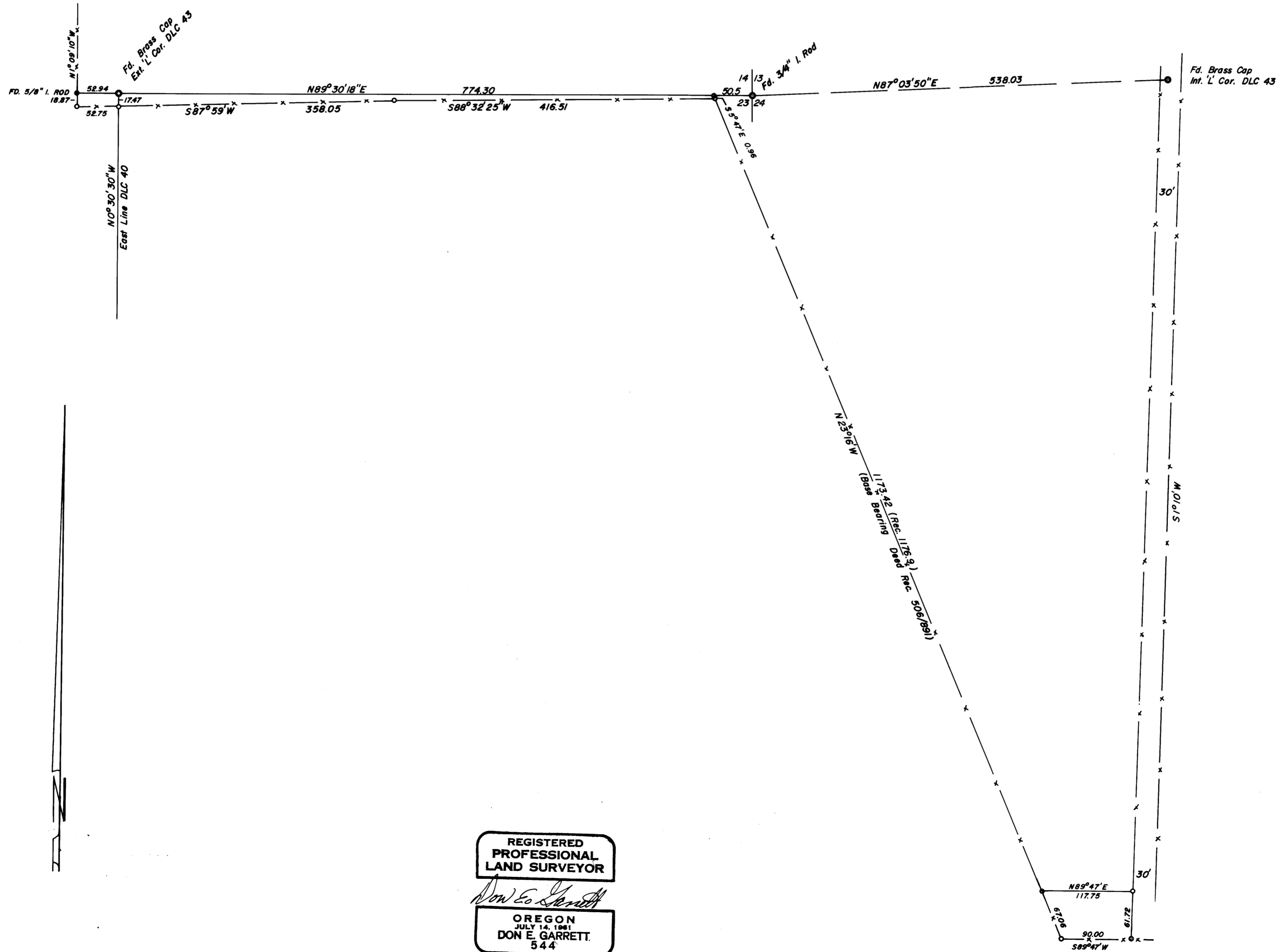
MAY 31 1974

COUNTY SURVEYOR
DOUGLAS COUNTY, ORE.
m

SURVEY IN SECTIONS 23 & 24, TOWNSHIP 26 SOUTH, RANGE 4 WEST, WILLAMETTE MERIDIAN
Surveyed for Glen Wecks by Don E. Garrett
May 1974

Scale 1" = 100'

o - SET 5/8" IRON ROD



REGISTERED
PROFESSIONAL
LAND SURVEYOR

Don E. Garrett

OREGON
JULY 14, 1961
DON E. GARRETT
544

MAP FILE M53 - 37

MAP FILE M53 - 37