

SURVEY IN SECTIONS 14 & 23, TOWNSHIP 27 SOUTH, RANGE 5 WEST, WILLAMETTE MERIDIAN

Surveyed for Pete Serafin by Don E. Garrett

April, 1974

o Set 5/8" Iron Rod
• Fd. 5/8" Iron Rod

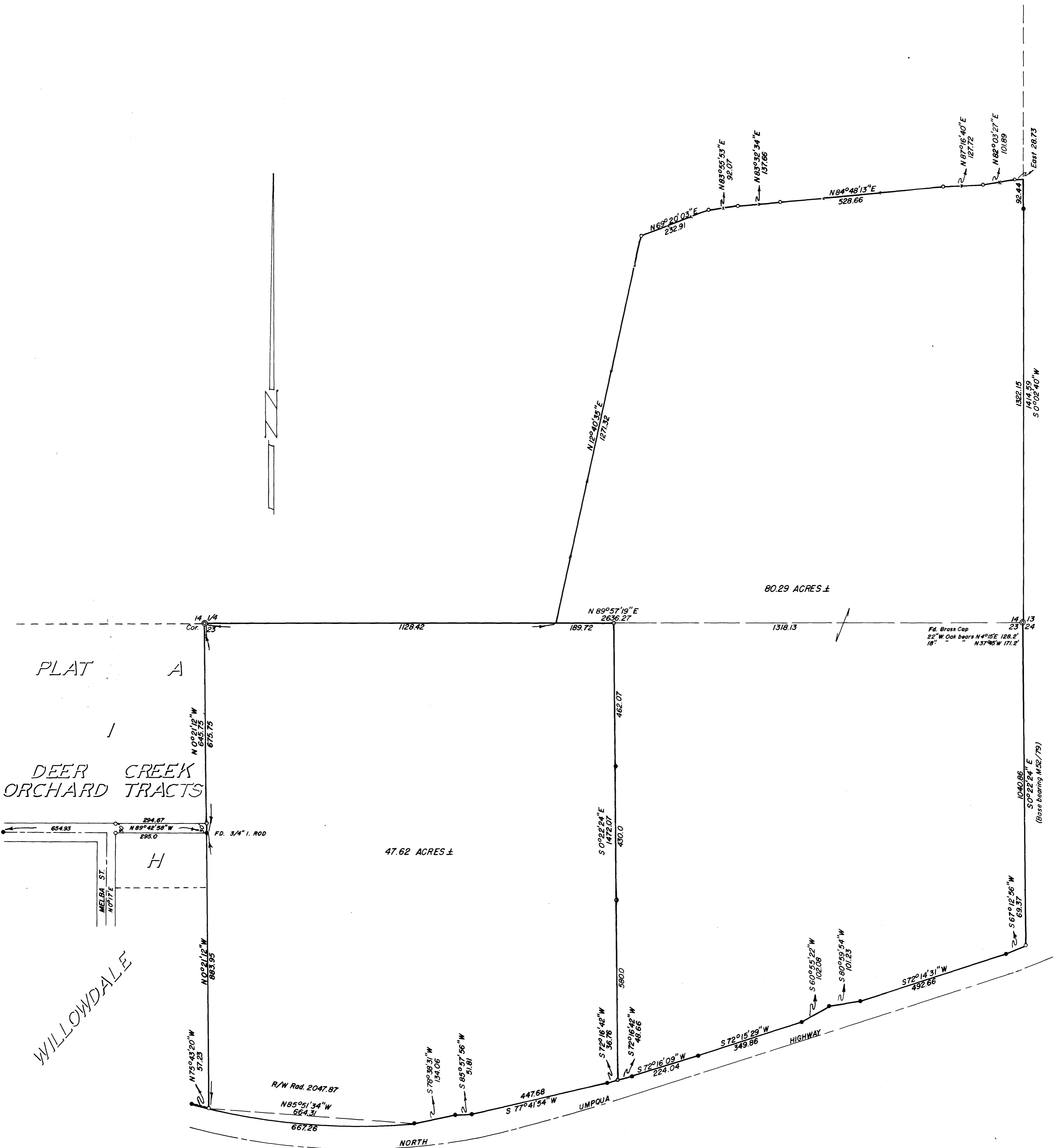
COUNTY SURVEYORS FILE DATA
DO NOT REMOVE FROM OFFICE

Scale 1" = 200'

FILED 2/4
RECEIVED 2/4

MAY 22 1974

COUNTY SURVEYOR
DOUGLAS COUNTY, ORE.
mpe



REGISTERED
PROFESSIONAL
LAND SURVEYOR

Don E. Garrett

DON E. GARRETT
544