

SURVEY IN SECTION 1, TOWNSHIP 27 SOUTH, RANGE 7 WEST, WILLAMETTE MERIDIAN

Surveyed for Richard A. Hutton by Don E. Garrett

May, 1974

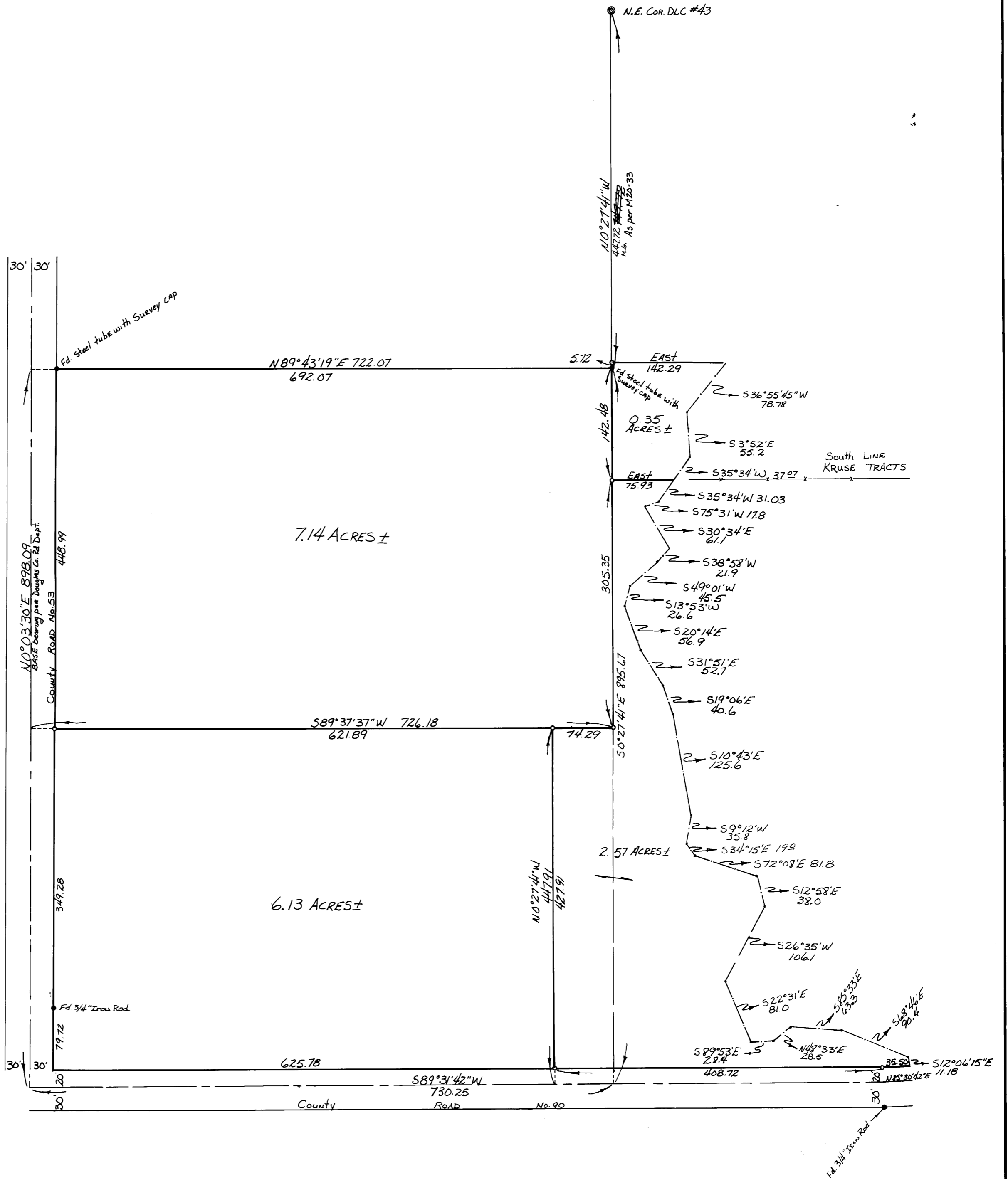
0 Set 5/8" Iron Rod

COUNTY SURVEYORS FILE DATA
DO NOT REMOVE FROM OFFICE

Scale 1" = 100'

FILED ✓
RECEIVED 7/9
MAY 22 1974

COUNTY SURVEYOR
DOUGLAS COUNTY, ORE.
mde



REGISTERED
PROFESSIONAL
LAND SURVEYOR
Don E. Garrett
OREGON
JULY 14, 1961
DON E. GARRETT
544