

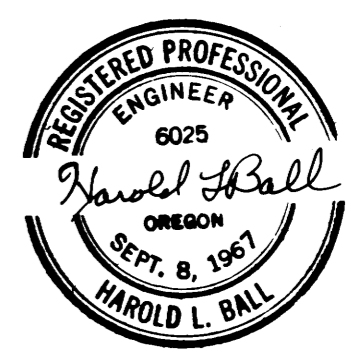
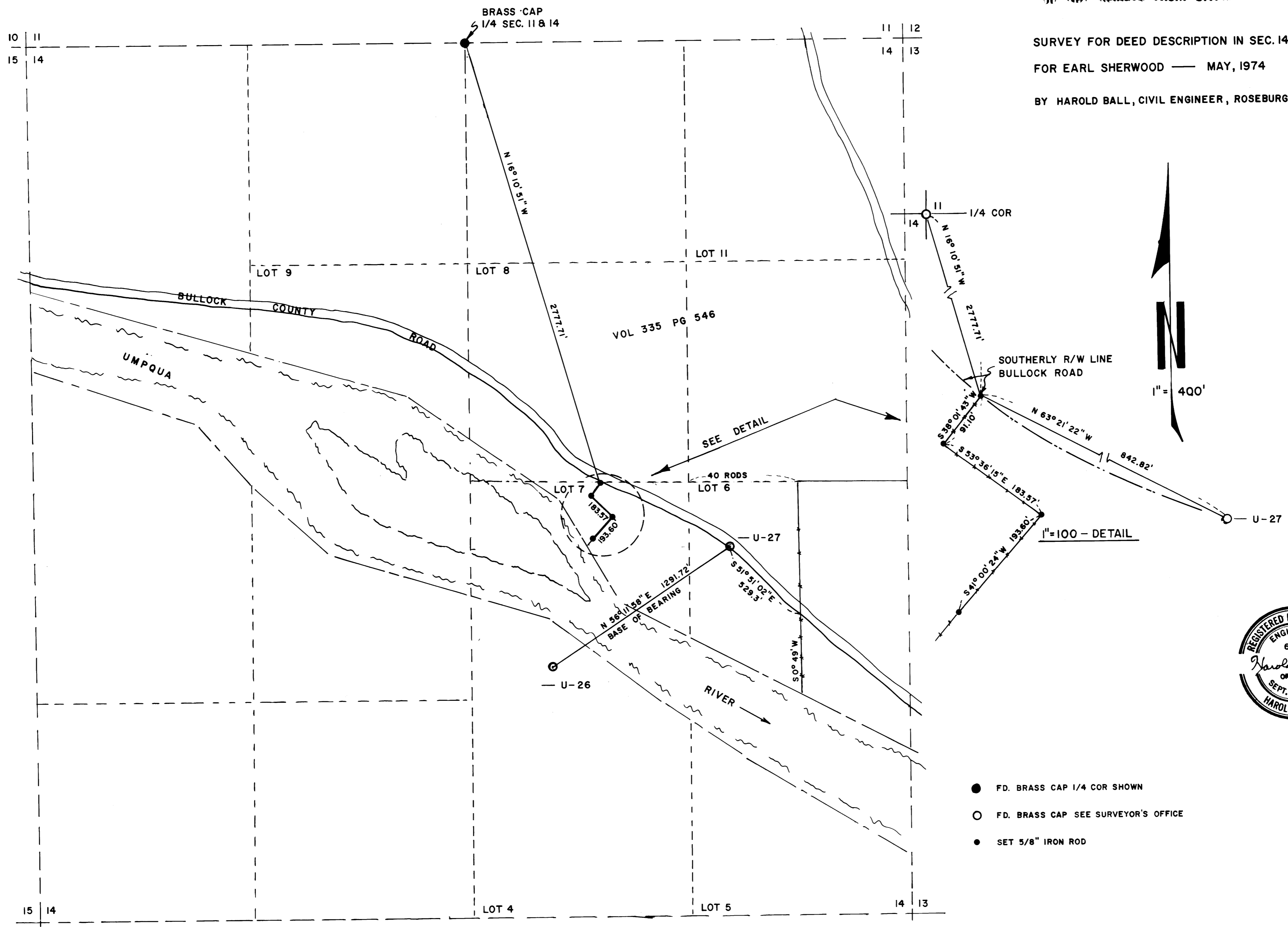
FILED   
 RECEIVED   
 MAY 20 1974

COUNTY SURVEYOR  
 DOUGLAS COUNTY, ORE.  
*md*

**COUNTY SURVEYORS FILE DATA**  
**DO NOT REMOVE FROM OFFICE**

SURVEY FOR DEED DESCRIPTION IN SEC. 14, T 24 S, R 7 W, W.M.  
 FOR EARL SHERWOOD — MAY, 1974  
 BY HAROLD BALL, CIVIL ENGINEER, ROSEBURG, OREGON

MAP FILE M.53 - 22



- FD. BRASS CAP 1/4 COR SHOWN
- FD. BRASS CAP SEE SURVEYOR'S OFFICE
- SET 5/8" IRON ROD

MAP FILE M.53 - 22