

RECEIVED 2/4

MAY 15 1974

SURVEY FOR PROPERTY CORNERS IN THE N.E. 1/4 SEC. 6, T.28S., R.6W., W.M. FOR — DON HAYTER BY — BAUGHMAN SURVEYING SERVICE

COUNTY SURVEYOR
DOUGLAS COUNTY, ORE.

OCTOBER 1973 COUNTY SURVEYORS FILE DATA SCALE 1" = 100'
FILE NO. - M51-39 DO NOT REMOVE FROM OFFICE

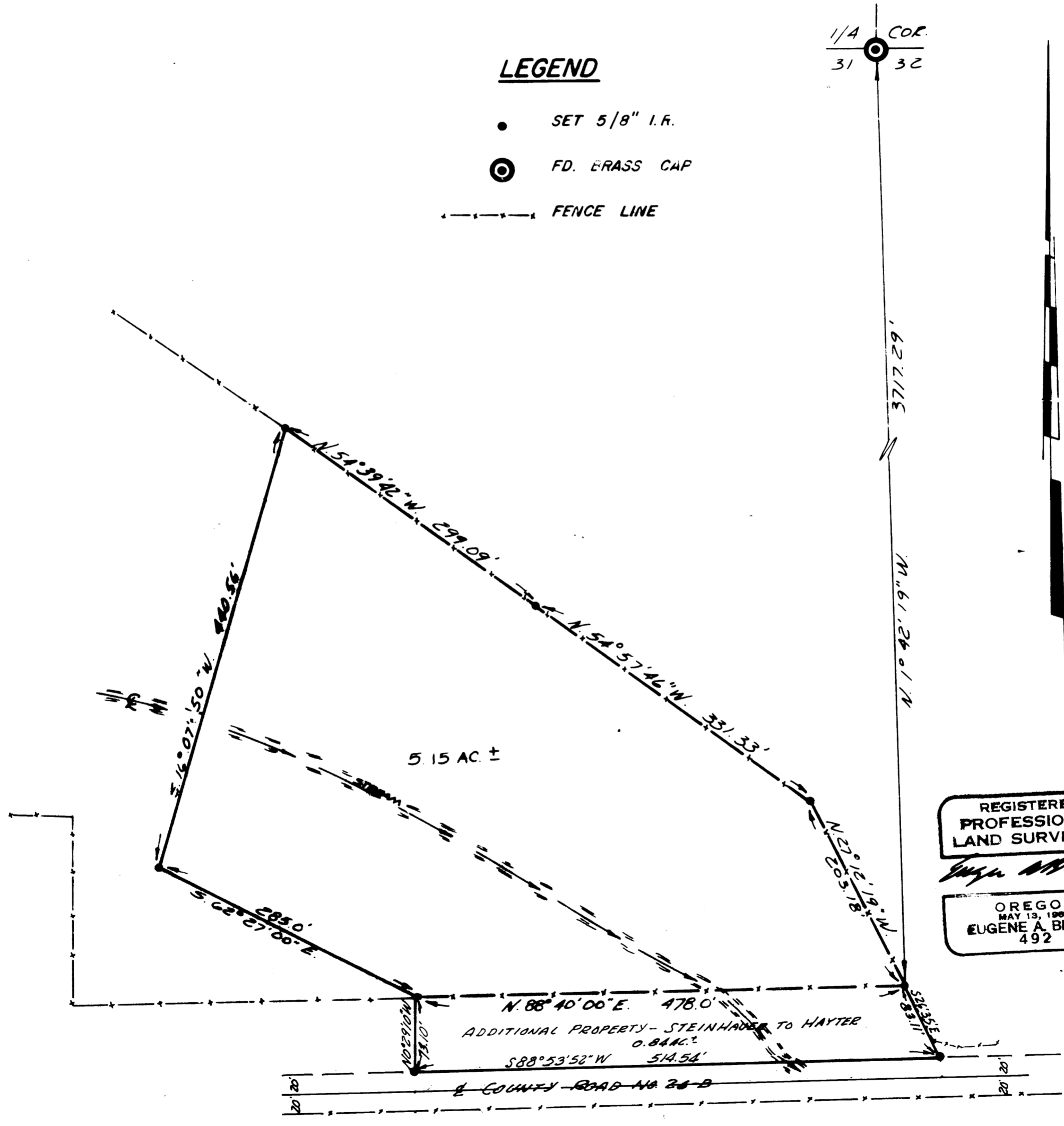
REVISED - MAY 1974

T.27S., R.6W., W.M.

LEGEND

- SET 5/8" I.R.
- ⊙ FD. BRASS CAP
- FENCE LINE

1/4 COR.
31 32



REGISTERED
PROFESSIONAL
LAND SURVEYOR

EUGENE A. BLOOM
MAY 13, 1960
492

BASED ON M-44-17