

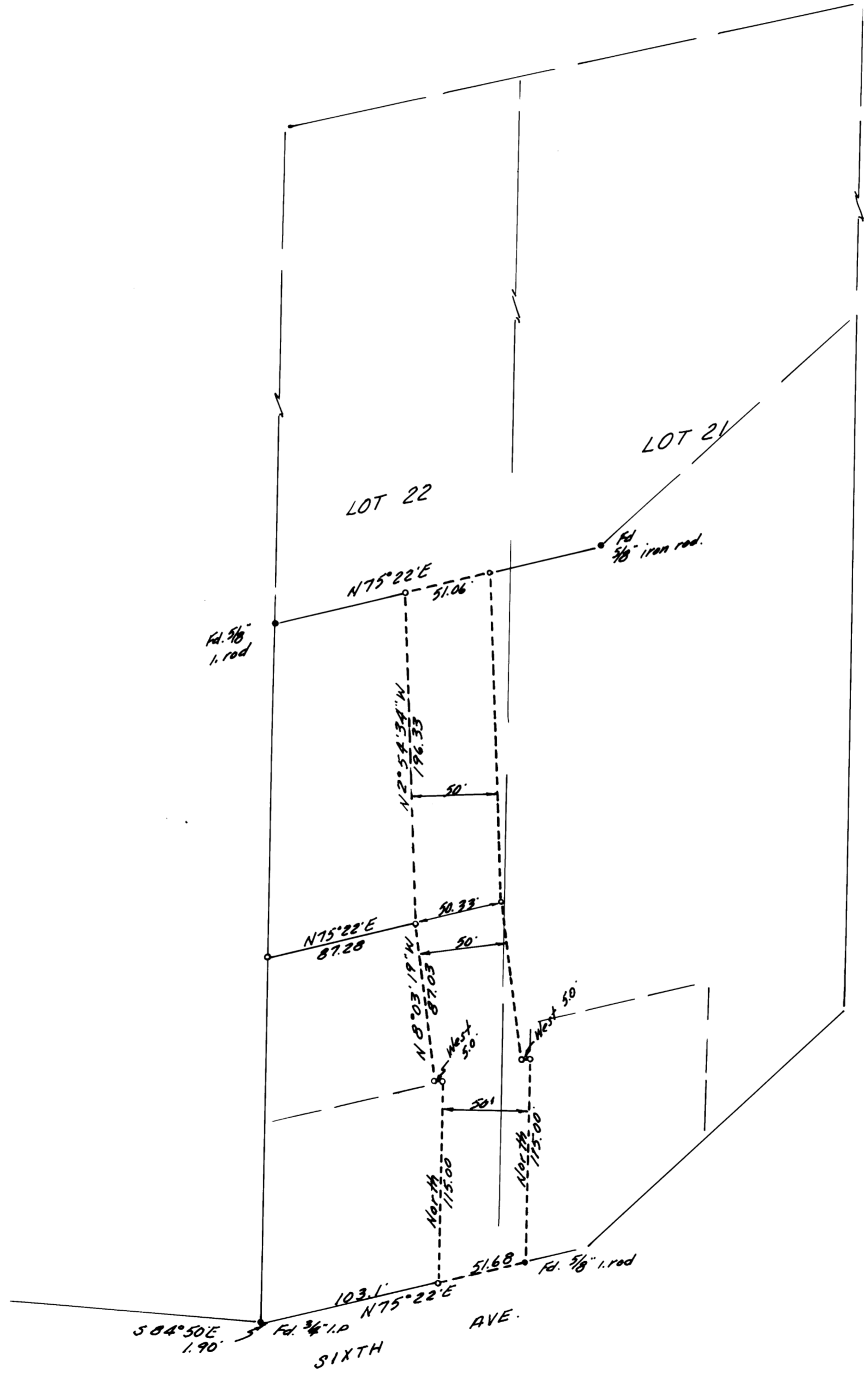
COUNTY SURVEYORS FILE DATA  
DO NOT REMOVE FROM OFFICE

*SURVEY OF ACCESS EASEMENT  
IN LOTS 21 & 22, BLK. 1, PLAT J, S.L. & W. CO.  
SEC. 16, T 25 S, R 5 W. W.M., DOUG. CO., ORE.  
SURVEYED FOR - FRED PALERMO  
SURVEYED BY - W.S. BARNES*

FILED ✓  
RECEIVED 07  
MAY 15 1974

COUNTY SURVEYOR  
DOUGLAS COUNTY, ORE.  
mcb

MAY 1974  
SCALE 1" = 60'



- Mon. found.
  - 1/8" iron rods set.
- Base bearing taken from West line of Lot 22.  
Refr. - 40-62

