

COUNTY SURVEYORS FILE DATA
DO NOT REMOVE FROM OFFICE

SURVEY IN SECTION 9, TOWNSHIP 27 SOUTH, RANGE 6 WEST, WILLAMETTE MERIDIAN
Surveyed for Blake Conn by Don E. Garrett
April, 1974. REVISED MARCH 25, 1975

Scale 1" = 200'

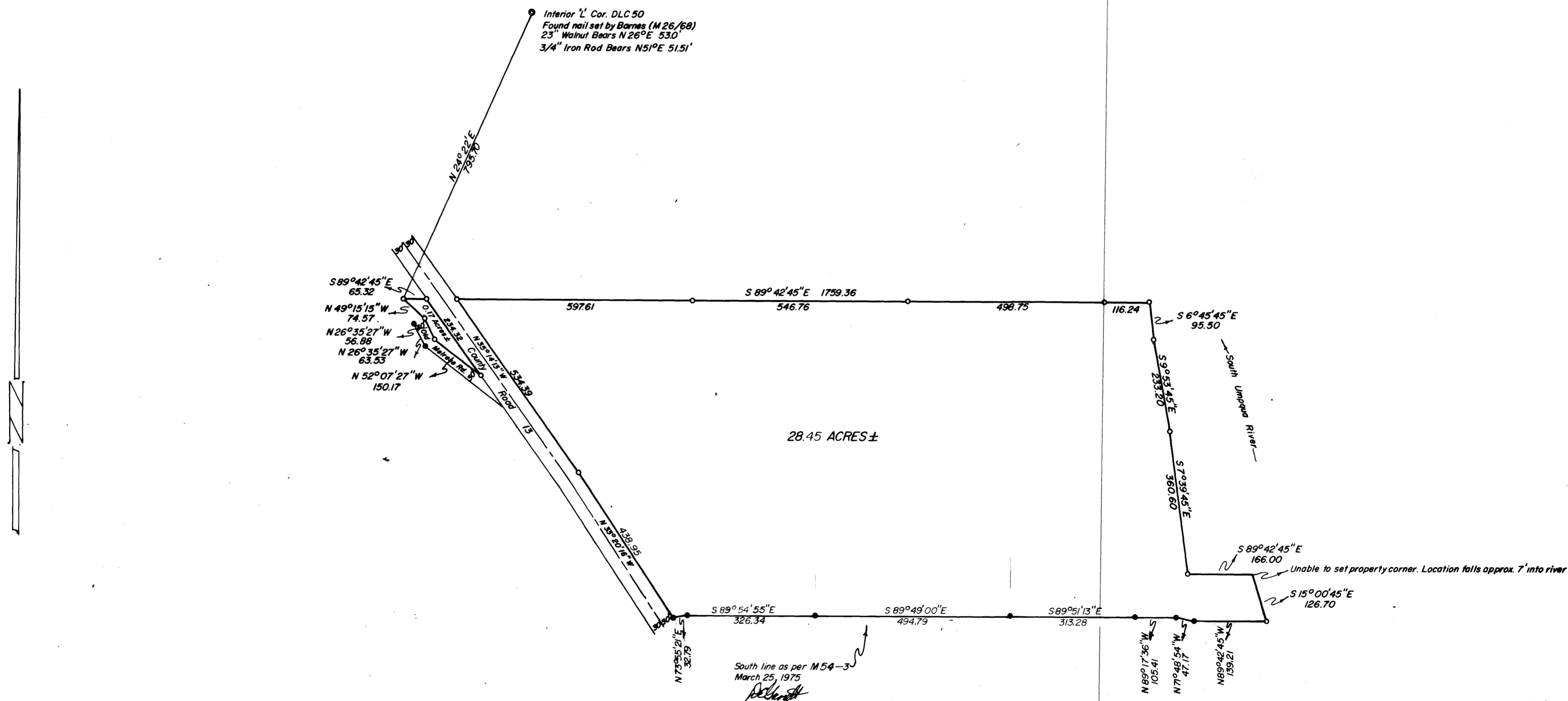
Bearings based on the North line of that property M 26-68
• Set 5/8" Iron Rod
• Found 5/8" Iron Rod

FILED ✓
RECEIVED ✓

MAR 25 1975

COUNTY SURVEYOR
DOUGLAS COUNTY, ORE.

map file M53-189



MAP FILE M53-189

Don E. Garrett