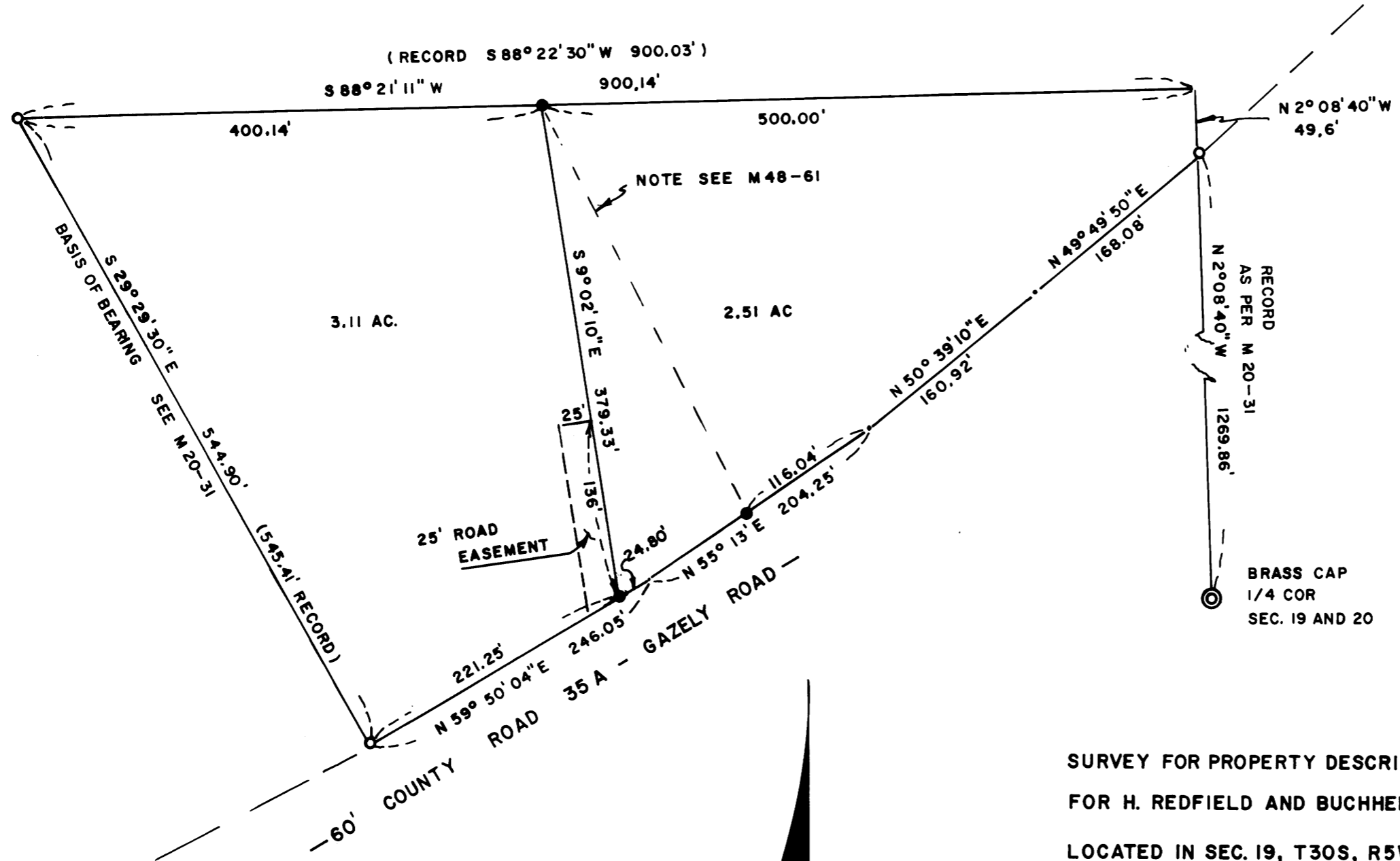


MAP FILE M53 - 16

FILED ✓
RECEIVED 77

MAY 1 1974

COUNTY SURVEYOR
DOUGLAS COUNTY, ORE.



SURVEY FOR PROPERTY DESCRIPTION
FOR H. REDFIELD AND BUCHHEIT
LOCATED IN SEC. 19, T30S, R5W, W. M.
APRIL, 1974

BY HAROLD BALL - CIVIL ENGINEER - ROSEBURG, ORE.



- FOUND 3/4" I. ROD
- SET 5/8" I. ROD

COUNTY SURVEYORS FILE DATA
DO NOT REMOVE FROM OFFICE

MAP FILE M53 - 15