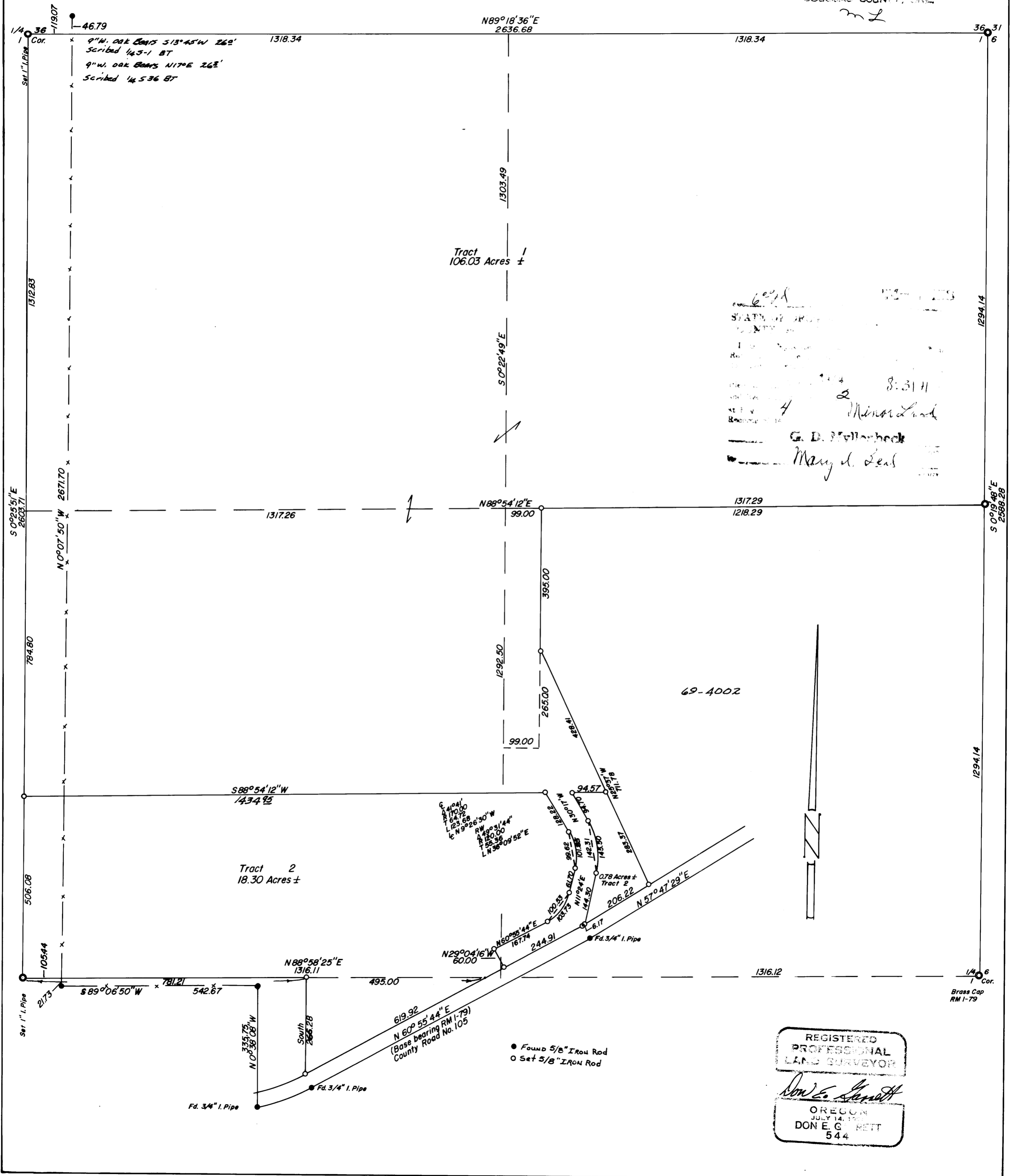


DO NOT REMOVE FROM OFFICE

FILED
RECEIVED 2/4

MAJOR LAND PARTITION
TOWNSHIP 29 SOUTH RANGE 6 WEST WILLAMETTE MERIDIAN

COUNTY SURVEYOR
DOUGLAS COUNTY, ORE.



69-4002

STATE OF OREGON
COUNTY OF DOUGLAS

8:31 H

Minor Land

G. D. Millerbeck

Mary d. Lent

REGISTERED
PROFESSIONAL
LAND SURVEYOR

Don E. G. Rett

OREGON
JULY 14, 1953
DON E. G. RETT
544