

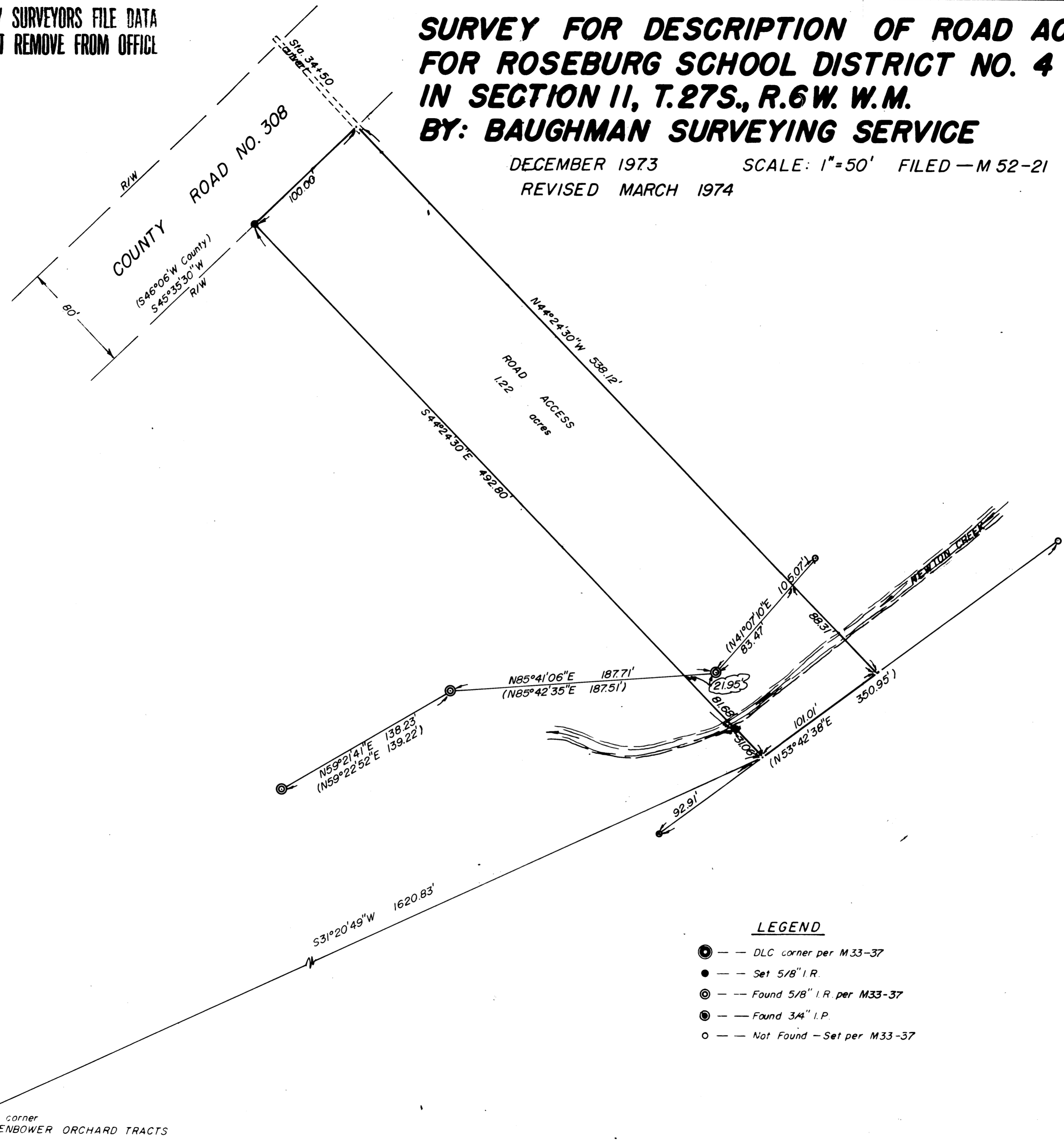
COUNTY SURVEYORS FILE DATA  
DO NOT REMOVE FROM OFFICE

# SURVEY FOR DESCRIPTION OF ROAD ACCESS FOR ROSEBURG SCHOOL DISTRICT NO. 4 IN SECTION 11, T.27S., R.6W. W.M. BY: BAUGHMAN SURVEYING SERVICE

DECEMBER 1973      SCALE: 1"=50'      FILED - M 52-21  
REVISED MARCH 1974

FILED ✓  
RECEIVED *md*  
APR 15 1974  
COUNTY SURVEYOR  
DOUGLAS COUNTY, ORE.  
*md*

MAP FILE M 53-11



### LEGEND

- ⊙ --- DLC corner per M33-37
- --- Set 5/8" I.R.
- ⊙ --- Found 5/8" I.R. per M33-37
- ⊙ --- Found 3/4" I.P.
- --- Not Found - Set per M33-37

REGISTERED  
PROFESSIONAL  
LAND SURVEYOR

*Glenn S. Baughman*  
OREGON  
JULY 14, 1961  
GLENN S. BAUGHMAN  
536

NW corner  
Issac Jones DLC No 65  
(N88°02'W 497.33' per M33-7)  
SW corner  
EDENBOWER ORCHARD TRACTS  
(N88°09'10" W 497.30' per M33-37)

N0°02'E 326.33' (326.04' per M33-7)  
BASE OF BEARING

MAP FILE M 53-11