

MAP FILE 135
COUNTY SURVEYORS FILE DATA
DO NOT REMOVE FROM OFFICE

FILED 7
RECEIVED 00

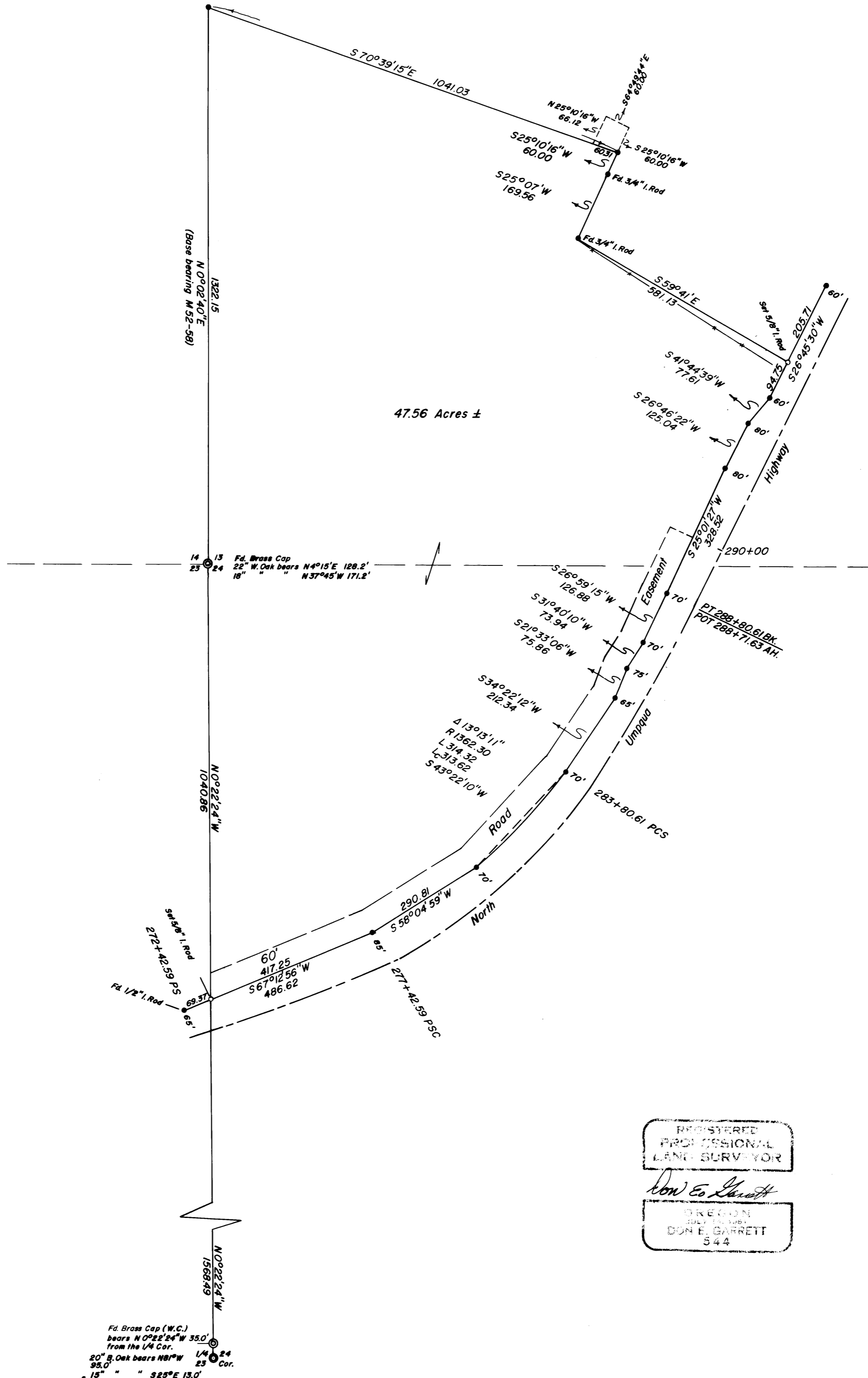
MAR 28 1974

COUNTY SURVEYOR
DEGLAS COUNTY, ORE.
mz

SURVEY IN SECS. 13 & 24, TOWNSHIP 27 SOUTH, RANGE 5 WEST, WILLAMETTE MERIDIAN
Surveyed for Pete Serafin by Don E. Garrett
March, 1974

Scale 1" = 200'

• Fd. 5/8" I. Rod



REGISTERED
PROFESSIONAL
LAND SURVEYOR

Don E. Garrett

OREGON
DON E. GARRETT
544

Fd. Brass Cap (W.C.)
bears N 0° 22' 24\" W 35.0'
from the 1/4 Cor.
20\" B. Oak bears N 81° W 23
95.0 \" \" \" 320° E 13.0'
15\" \" \" \"