

SUBDIVISION E 1/2 SECTION 12, T.27S.R.2W.W.M.

FOR: CAL WILLIS

BY: BAUGHMAN SURVEYING SERVICE

FEBRUARY 1974 SCALE: 1"=500'

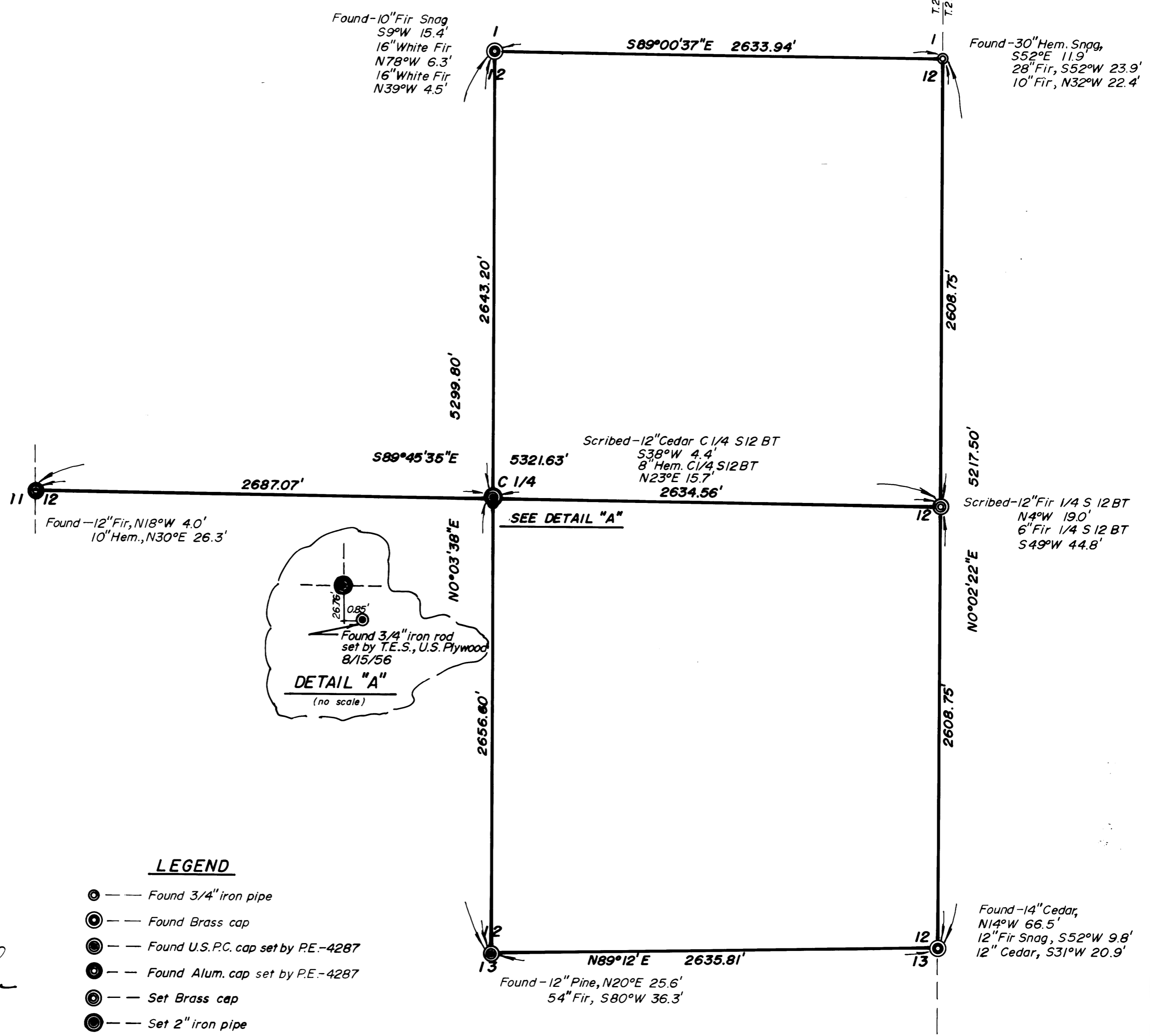
COUNTY SURVEYORS FILE DATA
DO NOT REMOVE FROM OFFICE

FILED 2
RECEIVED *BD*

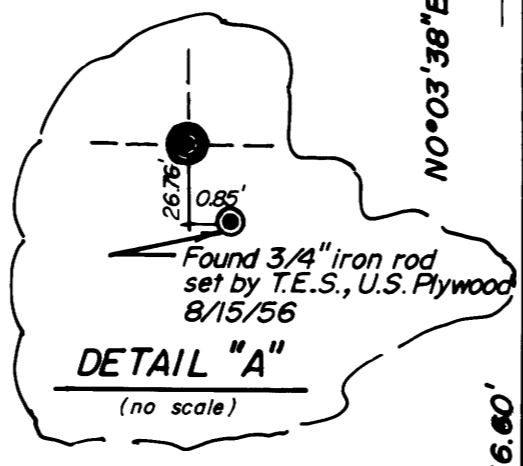
MAR 16

COUNTY SURVEYOR
DOUGLAS COUNTY, OR

T.27S. R.2W.W.M.
T.27S. R.1W.W.M.



BASED ON PLAT OF "FOREST HAVEN"



LEGEND

- — Found 3/4" iron pipe
- ⊙ — Found Brass cap
- ⊙ — Found U.S.P.C. cap set by P.E.-4287
- ⊙ — Found Alum. cap set by P.E.-4287
- ⊙ — Set Brass cap
- ⊙ — Set 2" iron pipe

William M. Baughman