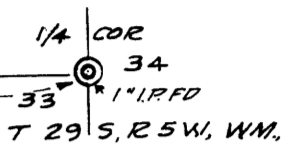
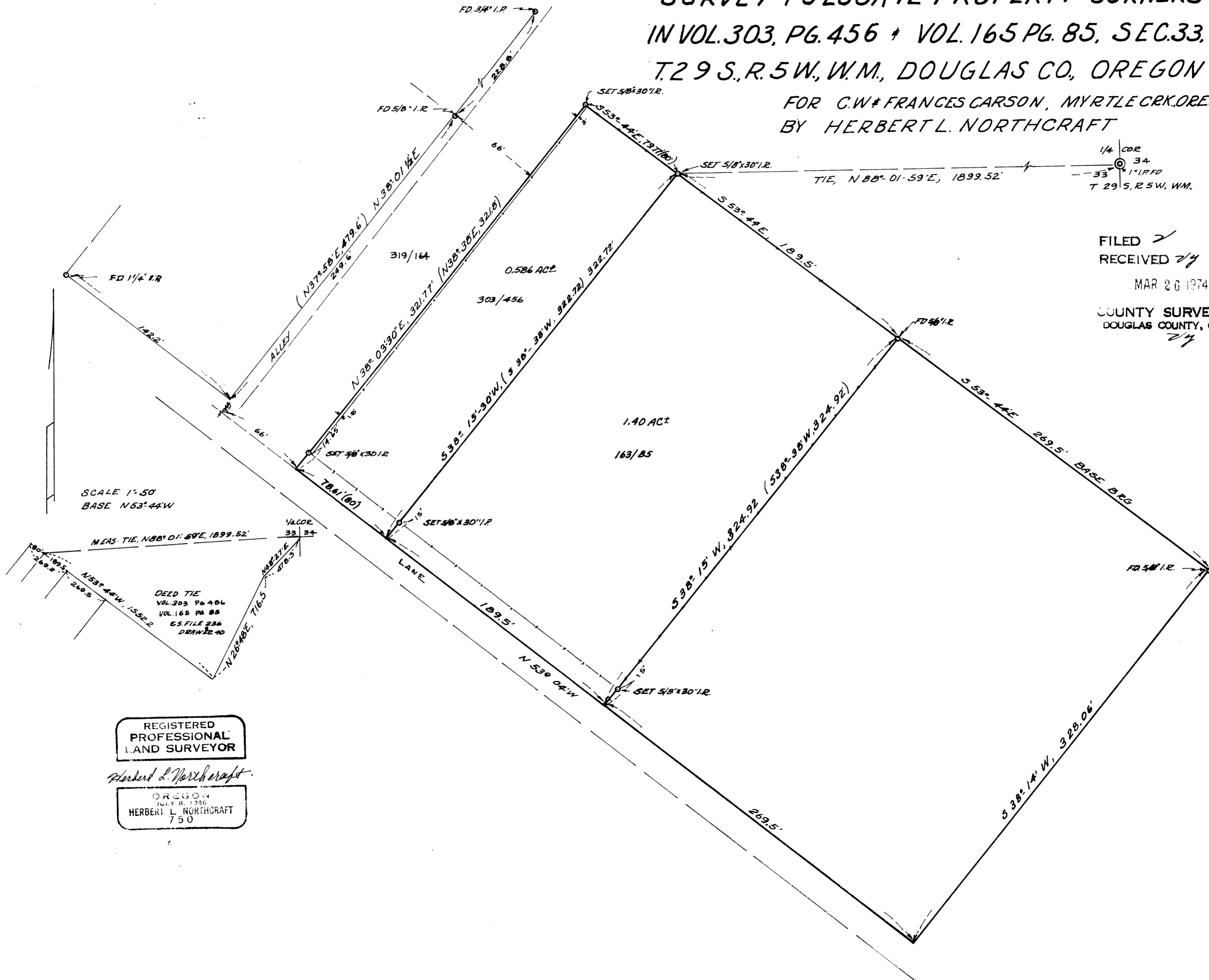


COUNTY SURVEYORS FILE DATA
DO NOT REMOVE FROM OFFICE

SURVEY TO LOCATE PROPERTY CORNERS
IN VOL. 303, PG. 456 + VOL. 165 PG. 85, SEC. 33,
T. 29 S., R. 5 W., W.M., DOUGLAS CO., OREGON

FOR C.W. & FRANCES CARSON, MYRTLE CRK. ORE.
BY HERBERT L. NORTHCRAFT

MAP FILE M. 52 - 75



FILED *✓*
 RECEIVED *7/4*
 MAR 26 1974
 COUNTY SURVEYOR
 DOUGLAS COUNTY, ORE.
7/4

SCALE 1" = 50'
 BASE N 53° 44' W

MEAS. TIE, N 88° 01' 59" E, 1899.52'

DEED TIE
 VOL. 303 PG. 456
 VOL. 165 PG. 85
 CS. FILE 236
 DRAWING 40

REGISTERED
 PROFESSIONAL
 LAND SURVEYOR

Herbert L. Northcraft

OREGON
 JULY 9, 1950
 HERBERT L. NORTHCRAFT
 750

MAP FILE M. 52 - 75