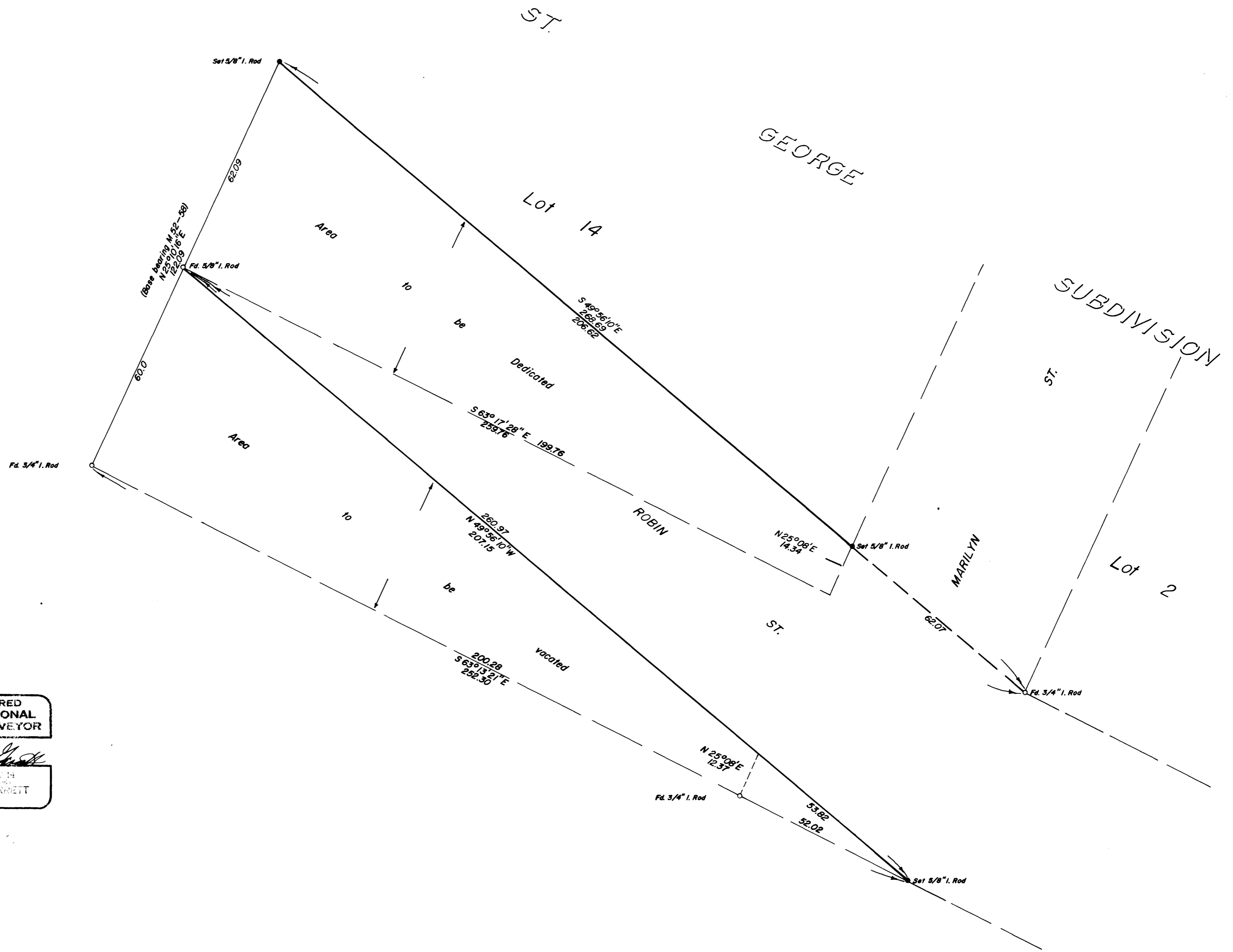
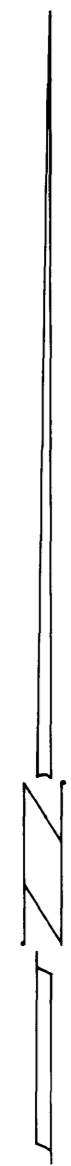


**SURVEY FOR VACATION AND DEDICATION OF PORTIONS OF ROBIN STREET, ST. GEORGE SUBDIVISION**  
 Section 13, Township 27 South, Range 5 West, Willamette Meridian  
 Surveyed for Pete Serafin by Don E. Garrett  
 March, 1974

COUNTY SURVEYORS FILE DATA  
 DO NOT REMOVE FROM OFFICE

FILED  
 RECEIVED *ML*  
 MAR 28 1974  
 COUNTY SURVEYOR  
 BULLHOLE COUNTY, ORE

Scale 1" = 20'



REGISTERED  
 PROFESSIONAL  
 LAND SURVEYOR  
*Don E. Garrett*  
 OREGON  
 JULY 18, 1964  
 DON E. GARRETT  
 544

MAP FILE M52-27

MAP FILE M52-27