

COUNTY SURVEYORS FILE DATA  
DO NOT REMOVE FROM OFFICE

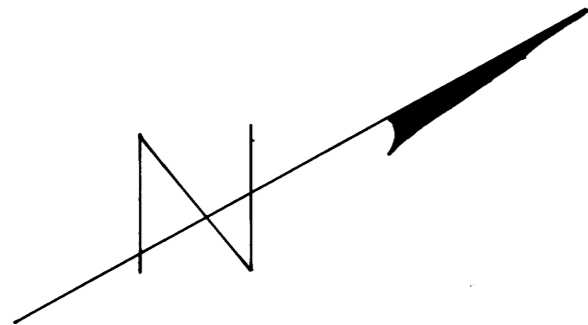
CENTER SECTION 9, T26S, R3W  
W.M. TO BRASS CAP & WIT. TREES

FILED ✓  
RECEIVED 2/4

COUNTY SURVEYOR  
DOUGLAS COUNTY, ORE.

*ml*

MAP FILE M52-63

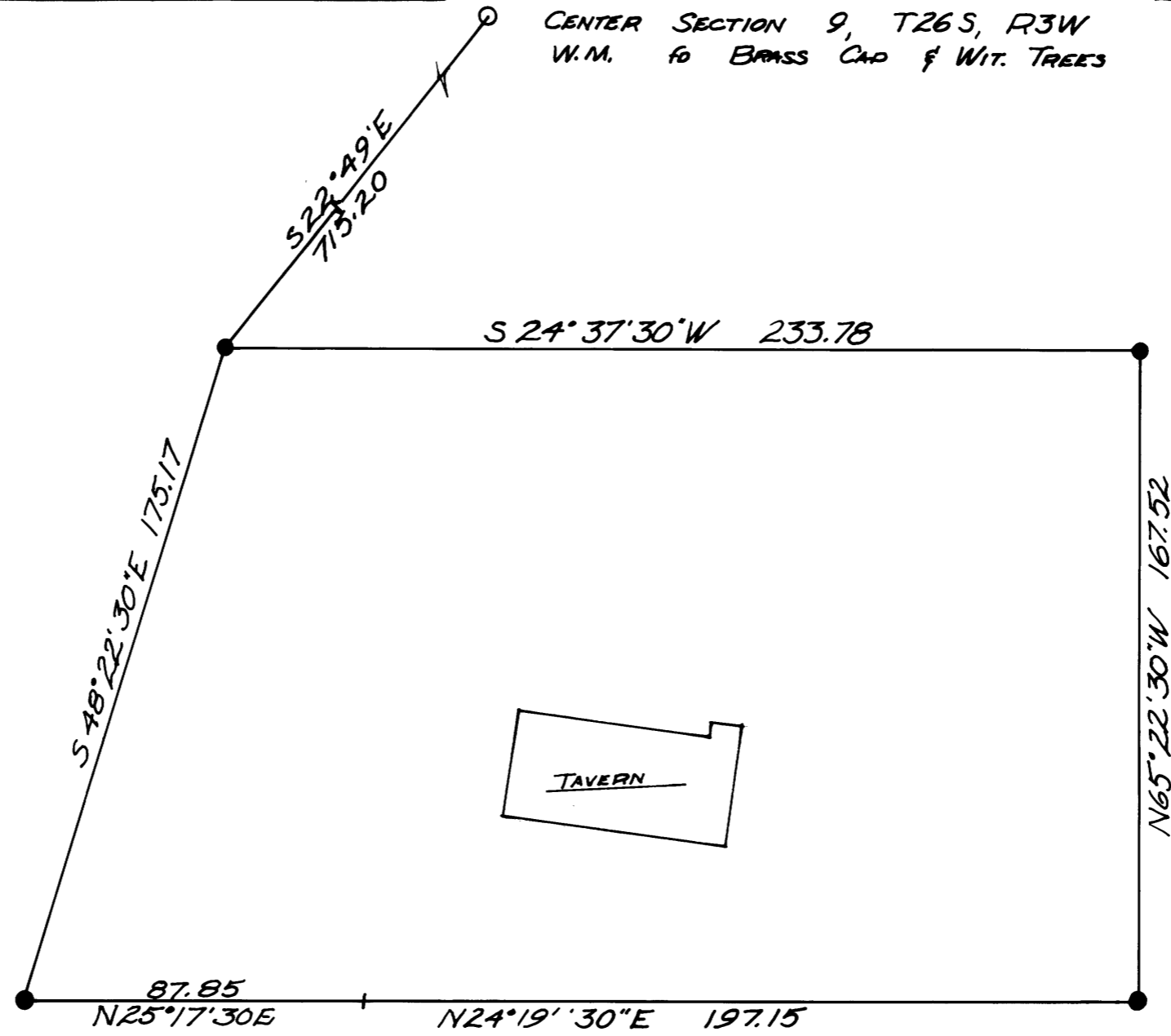


SCALE 1" = 40'

BASE BEARING

N. UMPQUA HWY

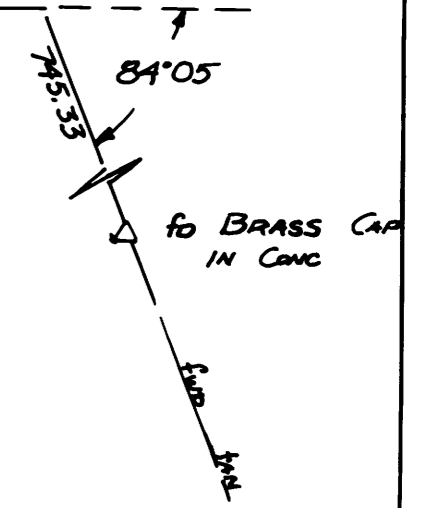
• SET 5/8" I. ROD



400' Spiral  
S = 6°  
A = .75

P.T. 1002 + 89.55

← N. UMPQUA HWY →



REGISTERED  
PROFESSIONAL  
LAND SURVEYOR

*Donald A. Bentz*  
GREGG  
JULY 12, 1927  
DONALD A. BENTZ  
839

FIELD SURVEY & PLAT FOR

JEWEL CHRIST (NARROWS TAVERN)

PARCEL IN SECTION 9 T26S R3W W.M.  
DOUGLAS COUNTY, OREGON

JAN 1973

DON BENTZ

MAP FILE M52-63